



# 2024 Annual Report







# 2024 Annual Report

**CPRF provides people with disabilities of all ages the customized services, support, and technology they need in order to facilitate their chosen personal and economic independence, with an emphasis on employment and training opportunities.**



# Table of Contents

- 6 Board of Directors**
- 7 In Memoriam: Donald D. Sbarra**
- 8 A Message from our Board Chairman**
- 9 A Message from our President & CEO**
- 10 Happy Retirement, Dr. Ohaebosim!**
- 11 Senator Moran Supports Timbers Renovation**
- 12 Happy Retirement, David Kemp!**
- 13 Meet Our New Vice President of Technical Services**
- 14 Happy Retirement, Dr. Janis Krohe!**
- 15 Meet Our New Vice President of Employment Services**
- 17 Success Story | Meet Robyn**
- 18 Wheelchair & Posture Seating Clinic**
- 19 Equipment Fund**
- 20 Exercise & Wellness**
- 22 Success Story | Meet Madison**
- 23 Guided Independent Living Assessment**
- 24 Timbers Apartments & Timber Lines Transportation**
- 25 Case Management**
- 26 Adult Day Services**
- 28 Success Stories | Meet Max & Emma**
- 29 Job Placement & Vocational Assessment**
- 30 School of Adaptive Computer Training**
- 31 Janitorial Services**
- 32 Demographics**
- 34 Financials**
- 36 River City Roll**
- 38 Donor Honor Roll**
- 50 Updates from Our Affiliates**

# Board of Directors

## **Chairman**

Dan F. Augustin

## **Vice Chairman**

Robert P. Daniels

## **Treasurer**

Michael C. Burrus

## **Secretary**

Russell W. Meyer, III

## **Members**

Sara DeVries

Patrick T. Jonas | CPRF President & CEO

Dave Jones

Timothy M. Koehler, D.O.

Dee Ann McIntyre

Pete Meitzner

Daniel J. Taylor

Daniel Taylor, Jr.

Patrick A. Terick

## **Founder**

John F. "Jack" Jonas, Jr.

# In Memoriam | Donald D. Sbarra



CPRF and our affiliate organizations, BTCO, Inc. and Center Industries Corporation are deeply saddened by the death of Don Sbarra.

Known for his many contributions to the world of broadcasting, Mr. Sbarra served on CPRF's Board of Directors for over 32 years, retiring in the summer of 2023. When he joined the CPRF team in 1990, Mr. Sbarra was chairman of the board and chief executive officer of Multimedia, Inc. He was also the founder of Sbarra Enterprises, a business he began in 1995.

While on CPRF's Board of Directors, Mr. Sbarra generously shared his business acumen and served on the Investment and Compensation Committee. He helped build a healthy business foundation to ensure the longevity of the company. Mr. Sbarra further strengthened CPRF by helping build funding relationships throughout the state.

Everyone at CPRF is fortunate to have been impacted by Don Sbarra's passion for helping others and his memory will live on through the work that CPRF does.

**“ Mr. Sbarra was a longstanding board member and an extraordinary champion of our mission. He was extremely generous and a keen advisor to both my father and myself. We are blessed to have had his tremendous support for these many years, he will be sorely missed. ”**

—Pat Jonas | CPRF President & CEO



# A Message From Our Board Chairman

The Cerebral Palsy Research Foundation of Kansas and the support organizations we founded, Center Industries Corporation (CIC) and Business Technology Career Opportunities, Inc (BTCO), have all had very positive impacts on our collective missions this year, advancing independence for Kansans with disabilities. As always, there have been unforeseen challenges but several new opportunities have left the future as bright as ever.

The Timbers campus is being rebuilt thanks to several state and community partners including KHRC and the City of Wichita. We have also received significant support from Senator Jerry Moran. CIC and BTCO are both exploring new opportunities that will assist in employing more individuals with disabilities. As mentioned, we are very excited about this coming year.

We were extremely saddened by the loss of long-time board member Don Sbarra who dedicated countless hours and resources to advance our mission over his 32 year tenure. Our thoughts and prayers go out to his family. In addition, we had a devoted and valuable board member retire after 28 years of service, Dr. Linus Ohaebosim. Dr. O was a champion of CPRF for nearly 3 decades and his dedication and passion for those we serve will be truly missed.

Finally, I would like to thank our other board members for sharing their talent and for their tremendous generosity. To all of our staff, corporate partners, and organizational contributors, we greatly appreciate all that you do to advance our mission.

I wish everyone a safe and prosperous 2025.

Sincerely,



Dan F. Augustin



# A Message From Our President & CEO

Each year, the Annual Report allows me the opportunity to thank our tremendous board, dedicated staff, talented volunteers, and generous funders for their unwavering support.

CPRF has been blessed for decades with outstanding champions of our mission, whether they are employees, board members, contributors, corporate partners, community partners, or government officials. Countless supporters deliver year after year to assist us in advancing independence for those we have the privilege to serve.

This year, two extremely knowledgeable and influential VP executive staff members, Dr. Janis Krohe and David Kemp, retired after decades of service in advancing our mission. Dr. Krohe served for 40 years, and Mr. Kemp for 26 years. Their skills and dedication will be sorely missed and we are forever grateful for their contributions. However, we are excited to welcome two outstanding new leaders, John Cuffe and Valarie Florio, who I am confident will successfully fill the void.

This year we celebrated Dr. Ohaebosim as he retired from the board after 28 years. His expertise and participation as Medical Advisor for our Outpatient Wheelchair Rehabilitation Facility has been very much appreciated and he will always be remembered for his kindness and passion towards our clients. Additionally, on a sad note, retired board member, Don Sbarra, passed away recently. His decades of service toward advancing the mission were instrumental to our success. He will be missed but never forgotten.

As mentioned above, our long-term relationships with entities such as KDHE, DCF, the Sedgwick County Department on Aging and Disabilities, Sedgwick County CDDO, Workforce Alliance, United Way of the Plains, and other United Way organizations across the state are critical to the success of our mission

We greatly value these longstanding partnerships with both individuals and agencies. While faces may change over time, we look forward to continuing these relationships for years to come.

Thanks for all you do for those we serve,



Patrick T. Jonas



# Happy Retirement, Dr. Ohaebosim!



“ In addition to being one of the kindest and uplifting people I have ever met, Dr. Ohaebosim has been a tremendous asset to our board for decades, assisting with the many medically related questions that have come front and center impacting our programs and clients.”

—Pat Jonas | CPRF President & CEO

After 28 years of dedicated and outstanding service on the CPRF Board of Directors, as well as its affiliates, BICO and Center Industries Corporation, Dr. Linus Ohaebosim has retired.

Joining the CPRF board in 1995, Dr. Ohaebosim's medical expertise has been instrumental in the success of the Wheelchair & Posture Seating Clinic and other medically-related projects, including the CPRF Rehabilitation Agency Committee.

Dr. Ohaebosim has a deep connection to his hometown of Amaigbo, Nigeria. Appointed Chief Agu Eze - The Orji 1 of Amaigbo in 1992, he leads his community's chief council, guiding decisions that impact the area.

He holds a master's degree in chemistry from Emporia State University and studied medicine at the University of Health Sciences in Des Moines, Iowa. He completed his internship at Lansing General Hospital in Michigan and obtained his medical license in Kansas in 1976, as well as in Nigeria through the Nigerian Medical Association.

His distinguished career includes being named the National Republican Congressional Committee's Physician of the Year in 2003, along with a nomination for the Via Christi Riverside Medical Center's St. Luke Physician Recognition Award. That same year, he was designated as a disability analyst and fellow by the American Board of Disability Analysts. Since 2001, he has also served on the board of directors for the Wichita chapter of the NAACP.

Dr. Ohaebosim's exceptional leadership and lifelong commitment to both his local and global communities leave a lasting legacy. We extend our deepest gratitude for his many years of service and wish him all the best in his well-deserved retirement.

# Senator Moran Supports Timbers Renovation with \$2.5 Million in Federal Funding



In April 2024, Senator Jerry Moran visited CPRF to announce Timbers apartment renovations will be supported by \$2.5 million of congressionally directed spending. This is a multi-phase project completed with the support of tax credits the Kansas Housing Resources Corporation (KHRC) approved in 2022. Senator Moran toured new and old units, met with partners, and talked with residents while on site.

**Thank you Senator Moran, for your collaboration and recognizing the importance of accessible housing for Kansans with disabilities.**



# Happy Retirement, David Kemp!



After 26 years of leadership, client advocacy, and unparalleled knowledge of customized wheelchair seating—David Kemp, our VP of Technical Services at the Wheelchair Clinic, retired this summer.

Thousands of clients have benefited from Dave's expertise. His knowledge of customized wheelchair seating for Kansans with disabilities was unparalleled. His legacy is a testament to the positive influence one person can have on not only a community, but the entire state.

**Thank you, Dave.**

# Meet Our New Vice President of Technical Services



**John Cuffe**

While obtaining his master's degree, John Cuffe completed a clinical rotation at CPRF. Years later, he's returned as our new VP of Technical Services.

John was born and raised in Illinois and moved to Kansas as a teenager. He studied at the University of Kansas, graduating with a Bachelor of Science in Education: Community Health.

His journey working in healthcare began at Kansas City Kansas Community College, where he worked on a Communities That Care grant focusing on public health initiatives.

With his heart set on more direct patient care, he received his Master's of Occupational Therapy at Rockhurst University. With over a decade of experience, John's career roots are in Critical Access Hospitals including Clara Barton Medical Center and Ellinwood District Hospital.

John has done a fantastic job getting to know our clients and we're thrilled to have him at CPRF.

“ This opportunity married my creative, inventive, and mechanical brain to the training I received through OT school to best help my patients achieve their goals...CPRF allows us to create what will help obtain the greatest quality of life for our clients and our techs help make it a reality. I already knew what CPRF did before I took the position, but after learning more about the company and this role, I am even more honored to be here and appreciate the opportunity to work alongside some of the best in the industry. ” —John Cuffe

# Happy Retirement, Dr. Janis Krohe!



After 40 years of dedication to employment and education programming for Kansans with disabilities, Dr. Janis Krohe, our VP of Employment Services, retired this summer.

Dr. Krohe's knowledge and innovative thinking is unmatched. She has served as an engineer, grant specialist, and business manager during her tenure. Her vision for accessible employment and training has built incredible community partnerships with local universities, public schools, businesses, and more—expanding CPRF's reach throughout the state.

**Thank you, Dr. Krohe.**

# Meet Our New Vice President of Employment Services

**Valarie Florio**

As our new VP of Employment Services, Valarie Florio leads our Job Placement, Vocational Assessment, and School of Adaptive Computer Training teams.

Valarie comes to CPRF with an extensive background in non-profit and government sectors—specializing in communications, fundraising, event planning, and workforce development. With a Bachelor's in Communication and Sociology along with a Master's in Criminal Justice, she is also currently pursuing a Master's in Business Administration.

We're thrilled to have Valarie's diverse knowledge and insight as she leads a central part of our mission—empowering people with disabilities with the education and resources they need to secure employment.

“ I love the workforce development field and this was a great opportunity to head a department that helps individuals with disabilities find job placements and obtain computer and work-related training. This organization adds value to our community, and I wanted to be a part of it. We are a great team, and there is a lot of talent over here.” —Valarie Florio





# Mobility

**Success Story | Meet Robyn**

**Wheelchair & Posture  
Seating Clinic**

**Equipment Fund**

**Exercise & Wellness**

A woman with sunglasses and a grey t-shirt that says "be kind it's really not that hard" is pushing a child in a black wheelchair. The child in the wheelchair is holding colorful sticks. To the right, another child is walking on a yellow and black walker. They are on a paved sidewalk in a residential neighborhood with trees and houses in the background.

# Meet Robyn

| Equipment Fund

## Having access to the right equipment changes everything.

Robyn was born with Down Syndrome and showed an interest in standing and walking, but didn't have the hip strength needed to support herself. Without the ability to crawl, her primary form of mobility was scooting.

"This mode of transportation is slow, difficult, and ruins every pair of pants," explained Andi, Robyn's mom. Scooting also meant Robyn needed to be carried for most errands and outings, a tiring challenge for any parent.

Before Robyn turned three, her family was lent a Crocodile walker. It completely opened up her world.

"She zoomed around our house and neighborhood, so happy to be able to go wherever she wanted, as fast as she wanted!" Andi shared. Navigating tight spaces, bumps, and even backing up came naturally to her. It was the perfect tool to help Robyn develop her mobility.

When Robyn turned three and started school, her physical therapist helped her family connect with CPRF's Equipment Fund and she received a Crocodile walker of her very own. After using it regularly, she began walking independently. Today, Robyn is officially a walker.

Robyn's newfound mobility highlights the life-changing impact adaptive equipment can have, empowering individuals to reach important milestones.

# Wheelchair & Posture Seating Clinic

Our Wheelchair & Posture Seating Clinic addresses the needs of adults and children with physical disabilities, building custom chairs that suit the needs and lifestyle of each individual.

In 2024, our clinic helped 827 Kansans in 66 counties find the right mobility solutions for their preferred lifestyle and needs.

Designed to enhance comfort, provide better body alignment, and minimize the risk of pressure sores, our seating systems range from manual chairs to intricate power wheelchairs. Physical and occupational therapists are on staff to work with each client to ensure that we build the best seating system possible.

All of our wheelchair seating systems are

built in-house by technicians with decades of specialized experience— 170 new wheelchairs and 118 major modifications came through our doors this year. Technicians and therapists work together to ensure each client receives the best chair for their optimal mobility, comfort, and independence.

Our partnerships and support from Sedgwick County, Kansas Department of Health and Environment Services for Children with Special Health Care Needs, United Way of the Plains, regional United Way organizations, and generous donations make it possible to offer the clinic as a valuable statewide resource for our clients.



# Equipment Fund



The CPRF Equipment Fund is a resource for people with disabilities throughout Kansas who need referral services, information, or financial assistance for medical devices and assistive technology.

Through this program, CPRF creates funding packages for items such as power wheelchairs, van lifts, home modifications, video magnifiers, cranial molding helmets, ramps, lift chairs, and much more.

Many assistive equipment devices can be costly and often present a financial hardship for individuals and families.

In 2024, we served 284 individuals, funded 161 devices, and worked with Kansans in 58 counties to improve equipment access across the state.

CPRF's partnerships and support from Sedgwick County, Kansas Rehabilitation Services, United Way of the Plains, regional United Way organizations, the Christine & Dan Giroux and Zack Steven Empower Kids ICT Fund, and generous donations, ensure our Kansas families receive the equipment they need.



# Exercise & Wellness

The CPRF Exercise and Wellness Program promotes fitness for people with disabilities through strength training, improving flexibility, and pain-controlling exercises.

In 2024, we helped 52 clients with their mobility and pain management journeys through customized exercise routines.

Any amount of physical activity plays a huge part in maintaining not only physical health, but also mental health, emotional well-being, and overall quality of life. Supporting our clients' abilities to perform daily living activities allows them to maintain their chosen level of independence.

Our Certified Restorative Aide works under the direction of an occupational therapist in our private gym on the Timbers campus. Our equipment includes parallel bars, standing frames, hand cycles, a para-gym, an elliptical, a cardio strider, and more.

Public transportation is not as accessible for people with disabilities to travel to a local gym, nor do most gyms have accessible equipment or the specialized assistance needed to fulfill a workout. Our program offers this and more.

CPRF partners with United Way of the Plains and Sedgwick County to provide these services to our clients in the area.





# Support

**Success Story | Meet Madison**

**Guided Independent  
Living Assessment**

**Timbers Apartments &  
Timber Lines Transportation**

**Case Management**

**Adult Day Services**

# Meet Madison

| Guided Independent Living Assessment & The Timbers Apartments



**“I love it here. I love the freedom. I feel so safe. It’s peaceful.”**

Madison has always wanted to live on her own and her experience in the Guided Independent Living Assessment (GILA) program helped her realize she was ready.

As a self-proclaimed introvert, the program gave Madison a sense of community and the chance to connect with other young adults who were navigating the same questions about independent living. Also during her GILA session, Madison deepened her love and knowledge of cooking.

Today, Madison has been living at The Timbers for just over a year. She enjoys decorating her apartment, crocheting, getting to know her neighbors in the Timbers community, and spending time with her emotional support dog, Millie.



# Guided Independent Living Assessment



The Guided Independent Living Assessment (GILA) program assesses the readiness of young adults with disabilities to live independently through a six-week immersive experience at The Timbers, a 100-unit accessible apartment community owned by CPRF. Developed in conjunction with Wichita State University, this program provides a plan for future success.

Classroom instruction is on-site at CPRF, as well as off-site at the Independent Living Resource Center. The curriculum covers essential living skills; budgeting, home and community safety, cooking skills, grocery and household shopping, personal self-care, and more. Participants also gain practical experience in accessing services,

including public transportation and a commodity supplemental food program.

Weekly mentorship sessions are provided by experienced Timbers residents who have successfully lived on their own for at least two years.

For young adults with disabilities, their families, and caregivers, readiness for independent living is a great concern, which can often keep people at home after they reach adulthood, and prevent them from achieving their independence goals. This program addresses those reservations and provides valuable insight into how prepared a young adult is to live independently.

# Timbers Apartments & Timber Lines Transportation

The Timbers is a 100-unit apartment community for people with physical disabilities, featuring roll-in showers, roll-under sinks and counters, accessible switches, and more. The Timbers also has three FEMA tornado shelters throughout the campus.

Our wheelchair-friendly, open concept apartments and facilities empower residents to live life on their terms. Individuals manage their own personal care staff, ensuring they have the personalized support they need to thrive. Craft club, community guest speakers, and other engaging social activities allow residents to connect and foster community.

In 2024, 111 residents called The Timbers

home. A wide variety of guest speakers from 19 organizations provided educational and entertaining presentations for residents — from beekeeping to lion and dragon dance performances. Experts from 12 community organizations provided HUD trainings on mental and physical health services, safety, and financial planning.

Timber Lines Transportation provides wheelchair-accessible rides to help residents and community members keep medical appointments, go to work, and more. In 2024, Timber Lines provided 4,296 rides. Timber Lines Transportation is supported by United Way of the Plains and Wichita Area Metropolitan Planning Organization.



# Case Management



Our case management team coordinates services, supports, referrals, equipment needs, and funding for individuals with disabilities who are eligible for the Intellectual and Developmental Disabilities Home and Community Based Services Waiver in Sedgwick and Butler Counties.

In 2024, Case Management expanded their service area to include Butler County individuals. Throughout the year, the department worked with 75 resource partners and dedicated 11,618 hours to help 104 clients achieve their goals.

Case managers work with clients to achieve and maintain their preferred lifestyle by helping them understand their rights and responsibilities. They monitor the services and assist clients

in determining preferred lifestyle needs through regular communication and site visits.

Support Plans include actionable items to help clients meet their independence goals and are re-evaluated by a client's care team as needed. Case managers collaborate with clients, providers, families, and guardians to ensure the best possible outcomes.

Staff also assist with locating employment and training options, along with resources to help build the skills and confidence needed to work in the community.

Our case managers are dedicated advocates, advisors, and allies for the people we serve.

# Adult Day Services



Our Adult Day Services team ensures that each client's individual needs are met every day while enhancing their quality of life. This program also provides families and caregivers essential time for work, running errands, attending appointments, and respite — with confidence that their loved ones are receiving excellent care.

In 2024, we served 30 individuals with a busy calendar of 135 community outings, 747 on-campus activities and lessons, and 249 classes.

Variety is key to all of our day program offerings. Community outings are planned with client input. Campus amenities include a garden, private courtyard, wheelchair swing, sensory room, private swimming pool, and many indoor learning

and recreation opportunities. Clients also benefit from physical maintenance and exercise programs to maintain mobility, as prescribed by their physicians.

Two service options exist within our Adult Day Program: the Kenneth J. Wagnon Life Skills Program and the K.T. Wiedemann Adult Learning Center.

The Life Skills Program is for adults with disabilities requiring more personal care and staff assistance, while the Learning Center promotes independence, focusing on daily living, safety, and social skill-building. Both programs benefit from a staff that engages the clients in reading, crafts, and other activities to ensure their time at our day program is enriching and well-rounded.



# Employment

**Success Stories | Meet Max & Emma**

**Job Placement &  
Vocational Assessment**

**School of Adaptive  
Computer Training**

**Janitorial Services**



# Meet Max & Emma

## Youth Transition Program

Max was searching for a role in customer service outside the fast food industry. What he found was a job with an inclusive culture that matched his personal interests.

Through CPRF's Youth Transition Program, Max revamped his resume and practiced mock interviews, gaining confidence in showcasing his potential to employers. He was also encouraged to ask his own questions during job tours to ensure a good fit.

After a few job tours, Max secured a paid work experience at Towne West's Vintage Stock, an entertainment store that perfectly aligned with his passions as a gamer and Comic Con enthusiast.

Upon completing his work experience, Max was offered a permanent position as a store associate. A typical day includes shrink-wrapping inventory, merchandising, engaging with customers, and learning new job duties. This role has helped him improve his time management and problem-solving skills in a practical setting.

**Max's positive attitude and eagerness to learn in the program ultimately led him to a job he loves.**

Emma completed a paid work experience at Vintage Stock almost two years ago. Initially, she never thought she would be interested in a retail job, but she discovered her talents and potential in customer service during her time in the Youth Transition Program.

Since then, **Emma has been hired on permanently and promoted twice—most recently to Assistant Store Manager.** She still uses the knowledge she gained from the program as a hiring manager today, when screening resumes and interviewing job applicants.

The most valuable aspect of the program for Emma was realizing what she was capable of while gaining experience in a job setting she had never considered. Her management position has helped her purchase a car and access health insurance.

Today, Emma enjoys the creative ownership that comes with her responsibilities in management, like designing store end caps and creating social media content. The camaraderie fostered in the store makes the work culture at Vintage Stock into a fun environment, not just a job.

# Job Placement & Vocational Assessment

Our Job Placement department guides people with various vocational barriers to the right position through employer networking, job tours, resume development, mock interviews, and application and job search assistance. Through Ticket to Work, Vocational Rehabilitation referrals, and our Youth Transition Program supported by Wichita Workforce Alliance, we work with clients individually to ensure they find a job that suits their career goals and abilities.

Work experiences are available for youth to explore job interests and for employers to evaluate candidates, ensuring the right fit. Our staff further assists in educating youth on financial literacy, leadership, employer's

expectations, current labor market information, and what to expect from the jobs they seek.

In 2024, 46 clients secured permanent employment and attended 37 work experiences. We partnered with over 35 employers across eight different industries.

Our Vocational Assessment team administers tests to measure aptitudes, skill levels, abilities, interests, work values, and more. The results generate a variety of potential careers and/or training programs that would suit the client. Our one-on-one approach ensures clients receive more precise employment recommendations, which can reduce job-related dissatisfaction and turnover rates.



# School of Adaptive Computer Training



The SACT is devoted to improving job-marketable skills for people with disabilities, serving students throughout the state. In addition to our Microsoft approved curriculum and Microsoft suite certifications, we offer courses in computing essentials, work readiness, and customer service. Three new classes were developed and introduced, a Computer Skills Assessment, Working Remotely and Staying Safe Online.

We offer in-person and virtual classes for high school students with disabilities to learn valuable workplace skills and earn Microsoft certifications in Word and Excel while earning school credit.

Since the youth program began in 2008,

506 high school students with disabilities have enrolled in the program and 85% of graduates in certification classes have passed at least one Microsoft Certification exam in certification classes.

In 2024, the SACT provided in-house training for BTCO employees, was added to the non-mandatory State Use Law catalog, created new classes, and continued to expand its reach—teaching students from 15 different cities in Kansas. For students who tested for Microsoft Office Specialist Certifications, there was also a 100% success rate.

Since opening in 1999, the SACT has served over 1,900 adult students with disabilities.

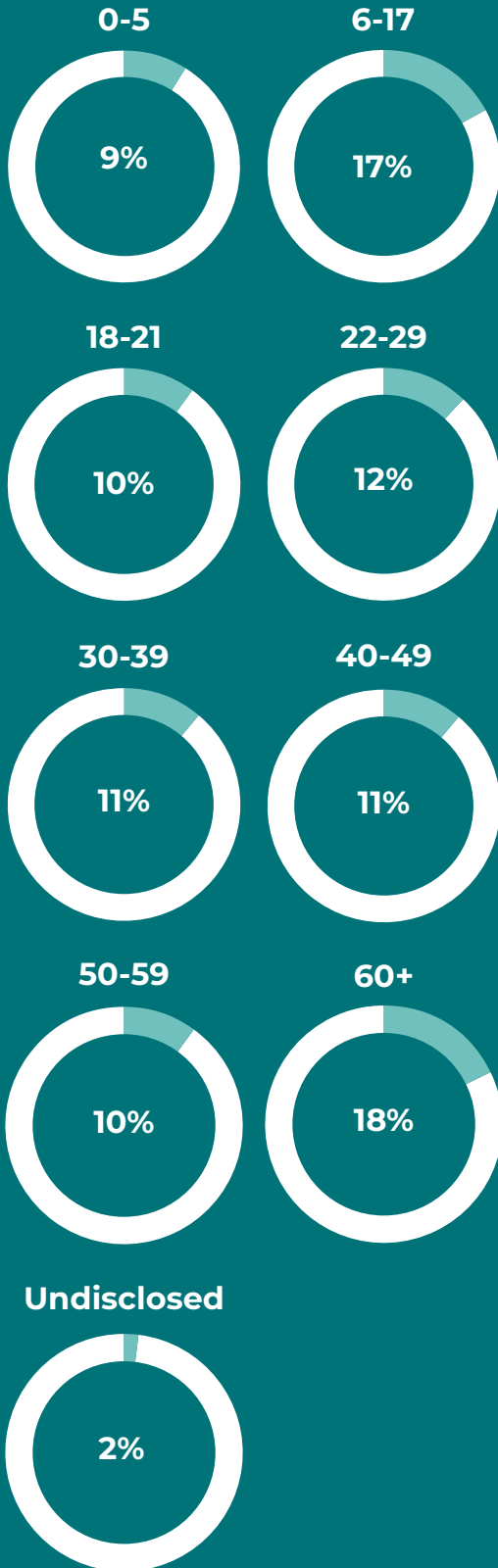
# Janitorial Services

The Janitorial Services program allows CPRF to offer more integrated employment opportunities for people with disabilities. This program provides part-time and full-time work with competitive wages and health benefits in the porter and janitorial fields. Our services include: floor cleaning, trash removal, dusting, window cleaning, porter/matron services, and other routine cleaning duties.



# DEMOGRAPHICS

## Age



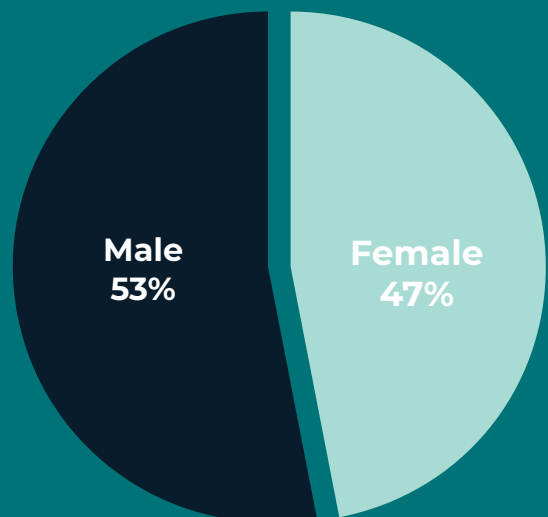
**1,381**

**Kansans Served**

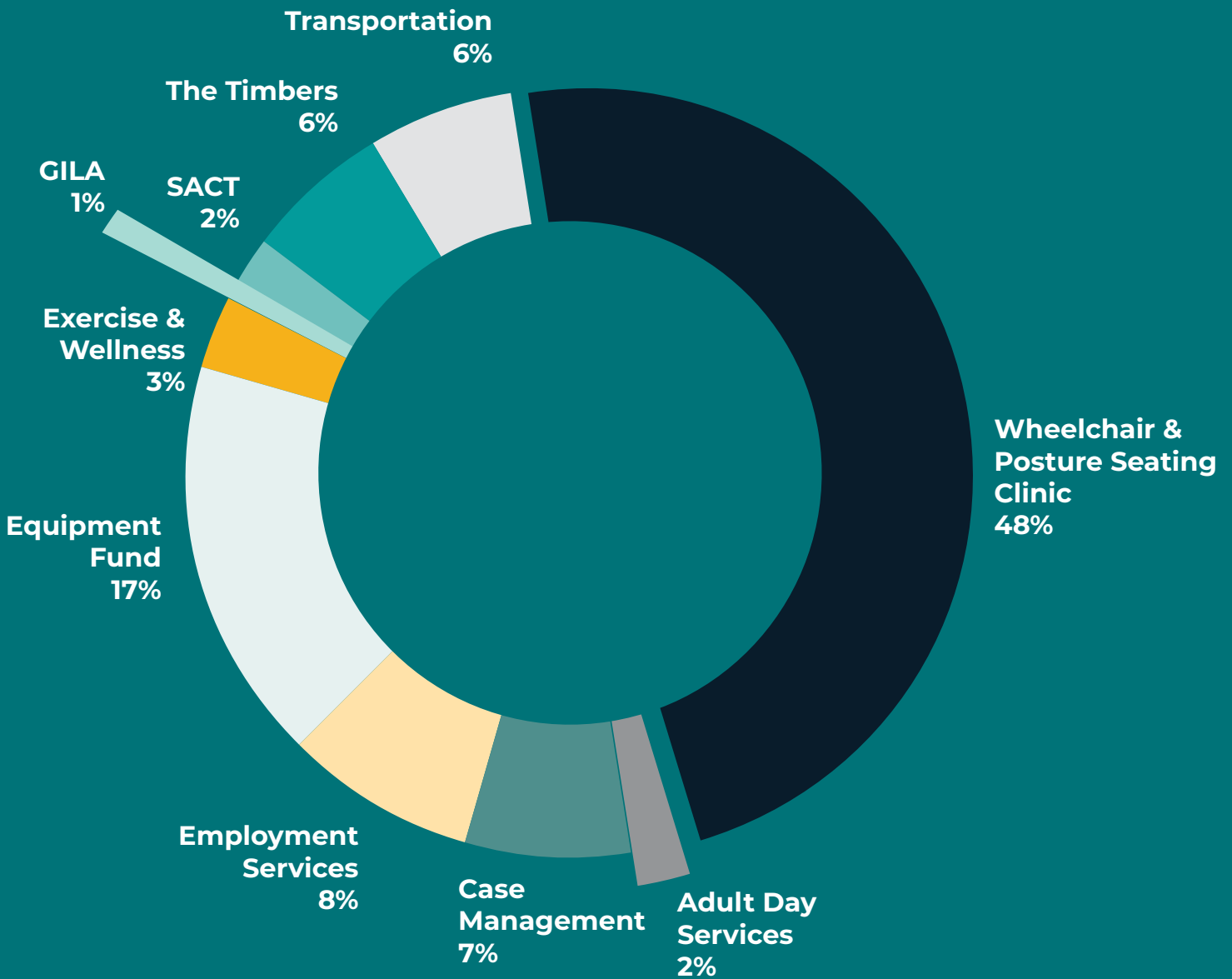
## Race

Race	Percentage
Native American	2%
Asian	2%
African American	11%
Hispanic	11%
Undisclosed	17%
White	57%

## Gender



# Program/Service Used



# Primary Disability\*

Cerebral Palsy	51%
Autism	12%
Intellectual/Developmental Disabilities	11%
Spina Bifida	6%
Learning/ADD	5%
Spinal Cord Injury	4%
Traumatic Brain Injury	3%
Muscular Dystrophy	3%
Mental Illness	3%
Neurological Disability	2%

\* This list represents the most reported disabilities to CPRF. Others include arthritis, stroke, amputee, epilepsy, down syndrome, orthopedic/back injury, quadriplegia, and more.

# FINANCIALS

## Revenue & Support

	2023	2024
Purchased Services	11.1%	11.3%
Private Donations	6.7%	10.3%
Services & Product Sales	18.2%	16.1%
Investments	11.5%	6.9%
Program Support Affiliates	24.9%	28.2%
Federal Grants & Services	11.4%	8.9%
State Grants	12.8%	14.7%
County Services	3.4%	3.6%

## Combined Abbreviated Statement of Financial Position

	2023	2024
Current Assets	\$6,833,745	\$7,568,245
Non-Current Assets	\$938,678	\$1,398,247
Net Capital Assets	\$8,778,210	\$8,391,682
Current Liabilities	\$742,306	\$774,053
Non-Current Liabilities	\$1,681,209	\$1,582,773
Combined Net Assets	\$14,127,118	\$15,001,348
<b>TOTAL ASSETS</b>	<b>\$16,550,633</b>	<b>\$17,358,174</b>
Undesignated	\$10,507,963	\$10,859,182
Board Designated	\$1,110,056	\$1,293,802
Donor Restricted	\$2,509,099	\$2,848,364

# Program Expenditures

## Community Support Services



## Wheelchair Clinic & Exercise & Wellness Program



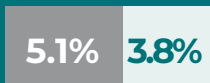
## Employment & Training



## The Timbers & Independent Living



## Community Outreach



## Development & Public Relations



## Facilities / Janitorial Services



## Administrative



● 2023 ● 2024

# River City Roll CASINO NIGHT

The 9th biennial River City Roll event really hit the jackpot, raising over \$272,000 for the CPRF Wheelchair Clinic & Equipment Fund. The guests applauded the new venue, vibrant Vegas decor, cocktails, cuisine and particularly enjoyed the casino games, everything from Black Jack to Roulette.

Thank you to the following committee members who made this event possible.

W.G. Farha  
Debbie Hersh  
Jennifer Knight  
Aaron McAnarney  
Janet Meyer  
Russ Meyer, III  
Dawn Minear  
Sarah Selmon  
Jamie Stratton  
Julia Thatcher

Many thanks to our event hosts, corporate sponsors, donors, volunteers and our talented emcees Julia Thatcher and Troy Lawson.



Hayley and her parents shared their experience about how CPRF's support has made a difference in their lives.

Watch Hayley's CPRF story here!



# Thank You To Our Amazing Sponsors!



# DONOR HONOR ROLL

*This list reflects gifts made from July 1, 2023 - June 30, 2024*

## **John F. Jack Jonas Award**

*Recognizing those donors who have contributed \$200,000 in a lifetime, or \$1 million through a deferred gift.*

Anonymous  
Bank of America  
Rita and Gene Bicknell  
The Boeing Company  
City of Wichita–HOME Investment Partnership Program Grant  
Robert Daniels  
Myra and Tom Devlin  
EDS Foundation  
EDS Corporation  
EOG Resources, Inc.  
\*Estes Evans Charitable Trust  
Federal Home Loan Bank of Topeka  
INTRUST Bank  
+Evalyn B. Joachim  
William T. Kemper Foundation–Commerce Bank, Trustee and Commerce Bancshares Foundation  
The Kresge Foundation  
Lattner Family Foundation Inc.  
Dwane L. and Velma Lunt Wallace Charitable Foundation  
The J. E. & L. E. Mabee Foundation  
McIntyre Foundation  
Helen and Russell Meyer, Jr.  
Lynn and +Robert Moore  
Patricia Wilson and +Bob Patterson  
+Carl Rohwer  
Susan and +Les Rudd  
Sandlian Realty  
Donald D. Sbarra  
+Pat and +Bob Schmidt  
Sandi and Brad Schreck  
Sally and +Bill Simon  
Kate and Dan Taylor  
Kenneth J. Wagnon Foundation  
Alice and Dale E. Wiggins

## **The Chairman's Award**

*Recognizing those donors who have contributed \$100,000 in a lifetime, or \$500,000 through a deferred gift.*

Larry and +Sally Arbuckle  
Cessna Foundation  
\*Barry L. and Paula M. Downing Foundation  
Fred C. and Mary R. Koch Foundation  
Maura and Bob Geist  
Dane G. Hansen Foundation  
\*Dee Ann McIntyre  
Microsoft Corp.  
Mary Lynn and +William L. Oliver  
Raytheon Aircraft Company  
Diane and +Darrel Rolph  
Mary Ann Skolaut

## **The Founder's Award**

*Recognizing those donors who have made an outright gift of \$10,000 or more, \$50,000 in a lifetime, or \$250,000 through a deferred gift.*

+Virginia and +George Ablah  
Anadarko Petroleum Corporation  
Anonymous  
Bailey Lauerman  
The Barton Foundation, Inc.  
Michelle Becker  
Beech Charitable Gift Fund  
Becca Bohl Trust  
Bombardier Learjet Care Fund  
Sherry and +Bernie Butler  
Bernie Butler Family Foundation  
Candlewood Hotel  
Michael D. Carney  
Cessna Aircraft Company  
Champions for Charity  
Steve Clark  
Community Foundation of Southwest Kansas  
Davis-Moore Auto Group

DCSS Ability, LLC  
 DeVore Foundation  
 Digital Consulting & Software Services, Inc.  
 \*Karissa and Mark Dugan  
 Employees Community Fund of Boeing Wichita  
 Emprise Bank  
 eoVision  
 EVCON Industries Inc.  
 Fahnstock Plumbing, HVAC & Electric  
 Kathy Feist Family Endowment  
 Fran Jabara Family Foundation, Inc.  
 Earl and Luther Fry Family Fund  
 Goodwill Industries of Kansas, Inc.  
 Gossen Livingston Associates, Inc.  
 Grand Chapter of Kansas Order of the Eastern Star  
 Libba and Wink Hartman  
 Veryle Heriford Estate  
 The Roy and Myrna Jo Herren Giving Fund  
 +Dan Hesse  
 Sherri and +Larry Hiebert  
 Edna Hightower Estate  
 \*IMA, Inc.  
 Beverly and +John F. Jonas  
 +Lilan Kane  
 Kansas Health Foundation  
 Key Construction, Inc.  
 Kiwanis Club of Wichita Foundation  
 John S. & James L. Knight Foundation  
 Koch Industries, Inc.  
 Joanie and Dr. Tim Koehler  
 Rex C. & Marie Elizabeth Larabee Trust  
 Rose Lichtenstein Estate  
 +Richard C. "Pete" Loux  
 Multimedia Cablevision  
 Multimedia Foundation  
 The Victor Murdock Foundation  
 Martha and Robert Neidhart  
 I.A. O'Shaughnessy Foundation  
 \*Patterson Family Foundation  
 +Mary Jean and +Larry Payne  
 POET Biofuels  
 Profit Builders  
 June and +Patrick Regan  
 The Darrell and Dee Rolph Family Fund  
 Salesforce.com, Inc.  
 SBC Foundation

Robert E. and Patricia A. Schmidt Foundation  
 Anita and +Deryl Schuster  
 Tom and Donna Shirley D/A Endowment  
 Signal Theory  
 Jake Simon Trust  
 Stephanie Simon Trust  
 Standard Beverage  
 The Sunderland Foundation  
 United Methodist Health Ministry Fund  
 Kate and Bill Walsh, Jr.  
 Westar Energy Foundation  
 Wichita Community Foundation  
 Wichita Gladiator Association  
 Wichita Greyhound Charities, Inc.  
 K. T. Wiedemann Foundation  
 \*Patricia and Tony Wilson  
 Winter Enterprises

## The Heritage Award

*Recognizing those donors who have made an outright gift of \$5,000 or more, \$25,000 in a lifetime, or \$100,000 through a deferred gift.*

\*6 Meridian  
 \*Jan and Jerry Aaron  
 Adams Brown  
 \*Adept Fasteners  
 Gladys and Buck Alley  
 American National Bank  
 Anschutz Family Foundation  
 Dot and Dan Augustin  
 Baughman Foundation  
 Debbie and Arlin Beer  
 \*Berry Foundation  
 Bicknell Family Foundation Fund  
 \*Trish Brasted  
 Brockmeyer, Inc.  
 BTCO, Inc.  
 Anne Buford  
 Burnham Products  
 Kathy and Mike Burrus  
 Yolanda and Gene Camarena  
 Cindy and Matt Carney  
 Janie and +Frank Carney  
 Arlo and Bob Casper

## The Heritage Award (Cont.)

Center Industries Corporation  
CMH Living Trust  
Commerce Bank, N.A.  
\*Evah C. Cray Residuary Charitable Trust  
Creative Ventures & Capital, Inc.  
+Lois and +Jim Daniels  
Drs. Karla and Brian Demby  
\*Sarah and Mark Devries  
David Egan  
The Fidelity Bank Foundation  
First Baptist Church  
Janis Friesen  
Galichia Foundation  
Gannett Foundation  
Craig Haines  
Tom & Roberta Harkness Endowment  
Nancy and +Richard Hassur  
Hawker Beechcraft Corporation  
R.D. and Joan Dale Hubbard Foundation  
+Lois Huebert  
The IMA Foundation  
Inter-First Company LLC  
Nita and Joey Jackson  
Pam and Pat Jonas  
Diana and Richard Kasper  
+Sandy and +Ben Kasper  
\*Tricia and David Kaufman  
Kathy and Herb Krumsick  
\*LDF Sales and Distributing  
\*Terri Lees  
The Carl V. and Honore G. Maloney Foundation  
Nancy and Hal McCoy  
\*Janet and Russell W. Meyer III  
Midwest Corporate Aviation  
Dawn and Brad Minear  
Murfin Inc.  
+Norma R. Murphy  
Kathleen and Patrick O'Shaughnessy  
\*Ana and David Pike  
Prudential Securities  
Sharol and Robert Rasberry  
Kimberly and Chris Read  
Laura and +Jack Richmond

Gwen and +J.B. Severt  
Sharla and Aaron Severt  
Pat and Jack Shelton  
Shultz Law Office PA  
John Sieber  
Connie and +Roger A. Sink  
+Clifford Stone  
Susan and Dan Taylor, Jr.  
+Regina and Alex Terick  
\*Textron Aviation  
THORN Americas  
Universal Lubricants  
Polly and +Patrick Vickers  
Vornado Air LLC

## Friends of CPRF

*Recognizing donors who supported CPRF  
with a gift from July 1, 2023 - June 30, 2024.*

Kim and Keith Adams  
Trenita Adamson  
Mildred Aguilera  
Stephanie and Michael Allen  
Kansas Alpha Delta Kappa Rho Chapter  
Susan Andrews  
Anonymous  
Arizona Community Foundation  
Jennifer Armstrong  
Arrowhead West  
Kim and Paul Attwater, III  
Arletha Austin  
Brooke and Timothy Aziere, Jr.  
Paul Babich  
Tamara and Dr. Bruce Bammel  
Lora and Don Barry  
Donna and Roger Basinger  
Marcia and Edwin Beasley  
Debbie and Arlin Beer  
Sherry and Mark Bell  
Erlena Benning  
Janet and Richard Benson  
Mondella Benton  
Sharon Bishop  
Kim and Chad Blackman  
Tamara Blunt

Orleane Bowman  
 Judy and James Bradshaw  
 Sarynn Brechbiel  
 Tammy & Ken Breeden  
 Jared Bregstein  
 Dalia Briggs  
 Marla Brockmeyer  
 Charlotte Brown  
 Marcela Berney Brown  
 Wilma D. Broyles  
 Karsten and Jace Bruns  
 Bryan's Heating and Air  
 Wendy and Dr. Alexander Brzezny  
 David Buccini and Jill Ford  
 Chris Calvert  
 Sue and John Cantele  
 Cargill Community Action Team  
 Tracey and John R. Carlile  
 Kay Carroll  
 Curvine Carter and Newton Webber  
 Central Market Wine & Spirits  
 Tim Cheaney  
 Mary Chegwiddden  
 Vanessa Chenault  
 Kayson Chong  
 CitationPartners LLC  
 Clark Investment Group  
 Debra Clatworthy  
 Susie and Dennis Clennan  
 Kari and Michael Clouse  
 Lori Coffey Smith  
 Colette and Kent M. Conner  
 Kelley and David Cox  
 Anne and Richard Cree  
 Jodi Cregger  
 Christina Croitoru  
 CrossFirst Bank  
 Bobbi and John Cuffe Jr.  
 Christy Curtis  
 Kathie and Dr. Shaker Dakhil  
 Dena and Mike Dassel  
 Susan Davolt  
 Susan Dester  
 Dillons Marketplace  
 Discmania  
 The Docking Financial Group, RW Baird

Dove Estates LLC  
 Michelle and Kenneth Dreiling  
 Mark Drummond  
 Heather Duffy  
 Grace Dugan  
 Peggy and Dr. Gregory Duick  
 Rhonda and Kevin Dunham  
 Ara Ann and Dennis Duty  
 Dynamic Discs  
 Angela Elam  
 Margaret and Randy Ellenz  
 Anne and Mark Elsworth  
 Kathleen Evans  
 Terri and Raymond Evans  
 Evergy  
 Church of the Resurrection Faith & Fellowship Class  
 Patrick Fallon  
 W.G. Farha and Son Enterprises  
 Buff Farrow  
 Jerome Fink  
 Marilyn and Robert D. Finn  
 Shelby and Garrett Flax  
 Peggy and Timothy Flynn  
 Robin and Byron Folkerts  
 Lorna Ford  
 Foulston Siefkin LLP  
 Deb and Bill Frailey  
 Katie Frank  
 Nancy French  
 Becky and Bud Frentz  
 Lanelle Frey  
 Marilyn Frydendall  
 †David Garretson  
 Robert Gartner  
 Garver LLC  
 Eric Gasper  
 Tiffany George  
 Amy and Scott Gepner  
 Michelle Gillard  
 Mona Gilliland  
 Carol and Clifford Glover  
 O.S. and Jaclyn Gossard Fund  
 Harlan Graber  
 Elizabeth and Jeffrey Graber  
 Kelly Graber and Family  
 Mark Grasse

## Friends of CPRF (Cont.)

Darcie and Bryan Green  
Joyce Green  
Sylvia and Larry Green  
Debbie and Joe Grisolano  
Victoria and Benjamin Guter  
Judith and Stanley Guyer  
Nils Hakansson  
Debbie and Ted Hall  
Hall's Culligan Water  
Lucas Hamilton  
Karen Hammond  
Nancy and Edward P. Hampel  
Lori and Scott Hampel  
Heather and Jason Hampl  
Ashley and Matt Haner  
Jane and Randy Harder  
Brandon Harkness  
Thelma Faye Harms Trust  
Hugh Harnden  
Marjorie Hartman  
Marilyn and Gary Hay  
Patty and Pat Hayes  
William Headrick  
Jennifer and Chris Hearne  
Jehramy Heckman  
Connie and Rick Heckman  
Donita Hedrick  
Tim and MariAnn Heeren  
Genny and Matt Henry  
Paula and Shawn Henry  
Randy Herrold  
Debbie Hersh  
Hiland Dairy Foods  
Deanna and Larry Hillyard  
Jessica and Kenneth Hines  
Betty and Tim Hittenberger  
Beth and Michael Hogan  
Delana Holmes  
Mary Honeck  
Sherlene Hook  
Russell Hopping  
Karen, Clif and Rachel Hostetler  
MaeLauren and Matthew Hudson

Tammy Huff  
Diana Hunt  
Innova Discs  
The Insurance Guys  
Charlotte Iseman  
Norah Iseman  
Bobbie and Alan Jaax  
Jacob Liquor Exchange  
Lou Jacobs  
Mary and Michael Jenkins  
Patricia Jensen  
Annabel Johnson  
Michelle Johnson  
Chris and Tom Johnston  
Lori Jonas  
Julie and Paul Jonas  
Peter Jonas  
Sally Jonas  
Amy Jones  
Anita Jones  
Winifred and Dave Jones  
Kansas Star Casino  
Mark Keeny  
Lyla and Carl Keith  
Victoria and David Keller  
Leland Kemp  
Glenn Kerbs  
Lori and Craig Kilian  
Kim Reed  
Carolyn and Tom Kitchens  
Linda and Arnie Klaassen  
Klein Construction Inc.  
Nancy and Greg Klenda  
Janis and Mark Kling  
KMUW  
KMW Ltd.  
Jane and Bob Knight  
Kelli and Heath Koehler  
Mary Frances Koehler  
Bette and Steve Kohman  
Erin and Bartholomew Kooiman  
Deborah and Klee Korte  
Kroger  
Janis Krohe, PhD  
Kathy and Herb Krumsick  
KSN, Channel 3

Patricia Kuntz  
 Darin LaCrone  
 Carol and Thomas Larson  
 Barbara Latta  
 Troy Lawson  
 MaryAnne Leap  
 Tony Lee  
 Mary Leiker  
 Julie and Doug Leis  
 Paul and Cindy Levy  
 Darla and Jerry Lewis  
 Sherri and Robert N. Lewis  
 Todd Lewis  
 LodgeWorks Partners LP  
 Vanessa and Chuck Lohf II  
 Lonetta Lollar  
 Merna Loux Kermott  
 Gillian, Claudia and Logan Madsen  
 Amanda and Mark Maier  
 Phyllis Malzahn  
 David Martin  
 Michael Martinez  
 Donna and Kim Mastalio  
 Diane Maurer  
 Kathy and Jeff May  
 Yvonna and Mark McAfee  
 Michelle McClung  
 Nora McCollum  
 Sally and Tom McGrath  
 Kimberly and Dennis McNinch  
 Lisa and Alex Meitzner  
 Brenda Meitzner  
 Suzi and Peter Meitzner  
 Michelle and John Melvin  
 Metal Finishing Co. Inc.  
 Dr. Chris Meyer  
 Deanna and James Michaelis  
 Wade Michaelis  
 Christine and Dave Mickulesku  
 Shelley Miles  
 Gale and John Miller  
 Mariah Miller  
 Millers Dry Cleaners  
 Dawn and Brad Minear  
 Ryan Minear  
 Mission Hills Country Club  
 Mission Thrift Shop  
 Melissa and Evan Moodie  
 Carolyn Moore  
 Christine Moore  
 Lisa Morgan  
 Charlotte and Bill Moss  
 Erin and Josh Mossbarger  
 Michelle Mott  
 Natalie Moyer  
 Murdock Companies Inc.  
 National Seating & Mobility  
 Tom Navrat  
 Robin and Duane Newton  
 Kelsey and Kevin Nichols  
 Kelli and Butch Nuss  
 Monica and Ricky Nutt  
 Erin Oh  
 Adaure and Dr. Linus Ohaebosim  
 Mark Orvis  
 Ann and Jim Osborne  
 OTB Discs  
 Sharon and Frank Oursler  
 Joanne and Bruce Pafume  
 Jason Painter  
 Clayton Parsons  
 Claire and David Patt  
 Micah Pederson  
 Shirley and Jerry Pelz  
 Susan and John Plett  
 Teresa and Robert Poulseen  
 Jill and Duane Poynter  
 Elizabeth and Thomas Pyle  
 Rand Graphics  
 Randy Cooper's Fine Jewelry  
 Diana and Larry Rankin  
 Shannon Rayl  
 ReeceNichols South Central Kansas  
 Susan Reed  
 June Regan  
 Donna and James Reid  
 DeeAnne and Rowland Reisig  
 Sandra and Curtis Renard  
 Jennifer and Austin Renfroe  
 Luiz Robles  
 Greg Robson and the Friday PB Gang  
 Aracely Rodriguez

## Friends of CPRF (Cont.)

Pam and Tom Rogers  
Dawn and Kendal Rohr  
Pamela Rose  
Lisa Rosina  
Sandra and Dan Runyan  
Linda Ruzich  
Kim Rye  
Kayla Sabala  
Scheels Wichita  
Kate and Dan Scheer  
Tona and Dr. Michael Schekall  
Jane and Andy Schlapp  
Cathy and Gary Schmitt  
Amy and JR Schmitt  
Robert Schroeder  
Peggy and John Schwendeman  
Sarah and Jason Selmon  
Gretchen and Michael Sharp  
Kathi Shaw  
Colby and Tobi Sheridan  
Katy and Michael Shultz  
Jon Simon  
Elisabeth and Glenn Sims  
Skyward Credit Union  
Helen Smith  
Tanna Smith  
Nicki and Larry Soice  
David Sosnowski  
Ann Sparks  
Chris Squires  
Susan Stalling  
Darla and Clark Stevens  
Cornelia Stevens  
Richard Stinnett and Charles Robinson  
Geri and Rick Stinson  
Jamie Stratton  
Julie and Scott Stremel  
Lisa and Bob Stuever  
Michelle and Jon Suddeth  
Sunflower Diversified Services  
Samantha and Roby Swan  
Monica and Steven Taylor  
Harold Tegethoff

Judy and Pat Terick  
Dixie and Greg Thomas  
Yvonne and Mike Thomas  
Dyan and Dave Thornton  
Melissa and Bogey Tinker  
Courtney Train  
Christine Trickey  
The Trust Company of Kansas  
Molly and James Tully  
Beth and Jay Tully  
Anna and Dr. Paul Uhlig  
Karen and Dave Unruh  
John Unruh  
Sheila Urton  
Kathleen and John Baker Van Saun  
Laura and Collin Vinyard  
Visual Media Group  
Donna Vo  
Carissa Volz  
Susan and Jay Watson  
Diana Weber  
Arlene and Eugene Weigel  
Jennifer Wells  
Christina Werth and Family  
Ron Werth  
Peggy and Richard Wheeler  
Janet and James White  
Kelly and Terry Whitesell  
Wichita Wind Surge  
Beth Wiechman  
Kevin Wilder  
Julia Willingham  
Kevin Wilmoth  
Barbara Wiskow  
Karla and Jeff Woods  
Anne and William Woods  
Helen Worrell  
Kelly Woudenberg  
Erin and Elliott Ybarra  
Che Keung Yim  
Crystal and Chad Young  
George Youssef  
Greg Zenner

## Memorials

*Recognizing contributions made in memory of a loved one.*

### Ed Bartlett

Marcia and Edwin Beasley  
Church of the Resurrection Faith & Fellowship Class  
Diana Hunt  
Deborah and Klee Korte  
Shelley Miles  
Teresa and Robert Poulseen

### John Patrick Bowman

Orleane Bowman

### Jeff Brockmeyer

Trenita Adamson  
Marla Brockmeyer  
Monica and Steven Taylor

### Joe Carney III

Lori Jonas

### Warren Cheaney

Tim Cheaney

### Jearldean Lillian Cully

Robert Schroeder

### Tony Delgado

Sarynn Brechbiel

### William Drews

Michelle and John Melvin  
Elizabeth and Thomas Pyle  
Kevin Wilder

### Jesica Gainer

Merna Loux Kermott

### Pamela Gillard

Michelle Gillard

### Esther Marie Green

Sylvia and Larry Green

### Barry Harris

Helen Smith

### Patricia Heeren

Kim and Chad Blackman  
Tammy & Ken Breeden  
Sue and John Cantele  
Kathie and Dr. Shaker Dakhil  
Peggy and Timothy Flynn  
Carol and Clifford Glover  
Betty and Tim Hittenberger  
Lisa and Alex Meitzner  
Joanne & Bruce Pafume  
Jill and Duane Poynter  
Greg Robson & the Friday PB Gang  
Susan Stalling  
Janet and James White  
Kelly and Terry Whitesell

### Larry Elliott Hiebert

Sherri Hiebert  
Dr. Linus Ohaebosim

### Carolyn Hill

Rhonda and Kevin Dunham  
Kelly Graber and Family  
Debbie and Ted Hall  
Hugh Harnden  
Annabel Johnson  
Kim Reed  
Darla and Jerry Lewis  
Sherri and Robert Lewis  
Susan and Jay Watson  
Peggy and Richard Wheeler  
Helen Worrell

### Carol Hopping

Russell Hopping

### Victoria E. Huff

Tammy Huff

### Matthew Jacobs

Lou Jacobs

**Aaron Jaquez**

Mildred Aguilera

**Jack Jonas**

Victoria and Benjamin Guter  
Winifred and Dave Jones  
Barbara Latta

**Jack and Eileen Jonas**

Pam and Pat Jonas  
Peter Jonas

**Jerry Jonas**

Victoria and Benjamin Guter  
Barbara Latta

**Joseph Jonas**

Victoria and Benjamin Guter  
Pam and Pat Jonas  
Mary Frances Koehler

**Sanderina and Benjamin Kasper**

Diana and Rick Kasper

**Joe Korst**

Mary Ann Skolaut

**Thomas Cole Kuntz**

Patricia Kuntz

**Lynda Larson**

Robin and Byron Folkerts

**James (Jim) W. Latta**

Victoria and Benjamin Guter  
Barbara Latta

**Jacob Lohf**

Vanessa and Chuck Lohf II

**Austin Lollar**

Lonetta Lollar

**Ryan London**

Nora McCollum

**Peter John Loux**

Merna Loux Kermott

**Richard Loux**

Merna Loux Kermott

**Dr. Don Malzahn**

Nils Hakansson  
Phyllis Malzahn

**Bill Mansfield**

Barbara Latta

**June and Bob McGrath**

MaryAnne Leap

**Ronald Dean Michaelis**

Donna and Roger Basinger  
Wilma Broyles  
David Buccini and Jill Ford  
Mary Chegwidde  
Ara Ann and Dennis Duty  
Terri and Raymond Evans  
Shelby and Garrett Flax  
Nancy French  
Karen Hammond  
Donita Hedrick  
Mary Honeck  
Amy Jones  
Kansas Alpha Delta Kappa Rho Chapter  
Linda and Arnie Klaassen  
Bette and Steve Kohman  
Paul and Cindy Levy  
Gillian, Claudia and Logan Madsen  
David Martin  
Kimberly and Dennis McNinch  
Wade Michaelis  
Deanna and James Michaelis  
Charlotte and Bill Moss  
Robin and Duane Newton  
Erin Oh  
Sharon and Frank Oursler  
Donna and James Reid  
DeeAnne and Rowland Reisig  
Harold Tegethoff

**James Moore**

Carolyn Moore

**Trinity Pacheco**

Carolyn and Tom Kitchens

**Robert L. Patterson**

Trish and Tony Wilson

**Angel Pederson**

Micah Pederson

**Patrick J. Regan**

June Regan

**Josh Rogers**

Pam and Tom Rogers

**Tessie Rogers**

Pam and Tom Rogers

**Kayleen Sabala**

Kayla Sabala

**Paul Skolaut**

Kathi Shaw

**Bill A. Simon**

Jon Simon

**Joyce Smith**

Winifred and Dave Jones

**Joyce and Odell Smith**

Mary and Mike Jenkins

**Helen Sosnowski**

David Sosnowski

**Larry Sparks**

Susan Andrews

Lucas Hamilton

Randy Herrold

Erin and Bartholomew Kooiman

Diane Maurer

Melissa and Evan Moodie

Ann Sparks

Julia Willingham

**Mary Frances Stuever**

Anonymous

Lisa and Bob Stuever

**Casey Renee Thomas**

Tracey and John Carlile

Christina Croitoru

Yvonne and Mike Thomas

Anne and William Woods

**Janet Thompson**

Kay Carroll

**Tristen T. Urton**

Sheila Urton

**Richard G. Van Saun**

Kathleen and John Baker Van Saun

**Virgil N. Webber**

Curvine Carter and Newton Webber

**Mary Werth**

Janet and Richard Benson

Marcela Brown

Debra Clatworthy

Susie and Dennis Clennan

Michelle and Kenneth Dreiling

Patrick Fallon

Jerome Fink

Mona Gilliland

Patricia Jensen

Janis and Mark Kling

KMW Ltd.

Mary Leiker

Gale and John Miller

Susan & John Plett

Susan Reed

Dawn and Kendal Rohr

Amy and JR Schmitt

Trust Company of Kansas

Diana Weber

Arlene and Eugene Weigel

Christina Werth and Family

Ron Werth

**Jade Woods**

Delana Holmes

## Tributes

*Recognizing contributions made in honor of someone special.*

### Jesse Berry

Nicki and Larry Soice

### Rachel Bradshaw

Judy and James Bradshaw

### Kayden Brazelton

Mariah Miller

### Glenda Briggs

Charlotte Brown

### Daniel Carney

Samantha and Roby Swan

### Mark S. Dester

Susan Dester

### Mandy Graber

Harlan Graber

### Lauren Herren

Donna and Kim Mastalio

### Dale Koehn

Beth Wiechman

### Hayley Minear

Karen, Clif and Rachel Hostetler

### Holly Smith

Beth and Mike Hogan

### Pat Terick

Diana and Larry Rankin

### Mike Thomas

Tamara and Bruce Bammel

### Robert Uhlig

Anna and Paul Uhlig

### Rebecca Whittaker

Angela Elam

## Community Partners

Atchison Area United Way

Butler County Government

Central Kansas Community Foundation

Community Foundation of Southwest  
Kansas

Finney County United Way

Golden Belt Community Foundation

Greater Salina Community Foundation

Independence Area Community Chest

Independent Living Resource Center

Kansas State Government

Legacy Community Foundation

Sedgwick County Government

Seward County United Way

United Way of Central Kansas

United Way of Dodge City

United Way of El Dorado

United Way of Ellis County

United Way of Harvey and Marion  
Counties

United Way of Kaw Valley

United Way of McPherson County

United Way of Reno County

United Way of Southwest Missouri and  
Southeast Kansas

United Way of the Flint Hills

United Way of the Plains

Western Kansas Community Foundation

A young boy with short brown hair is sitting in a blue and black wheelchair on a paved surface. He is wearing a blue and white patterned tank top and red shorts. He has a joyful expression, resting his chin on his hand. The background shows a green lawn, a large green plant, and a wooden building. The text 'Thank YOU' is overlaid in large white letters on a semi-transparent teal background.

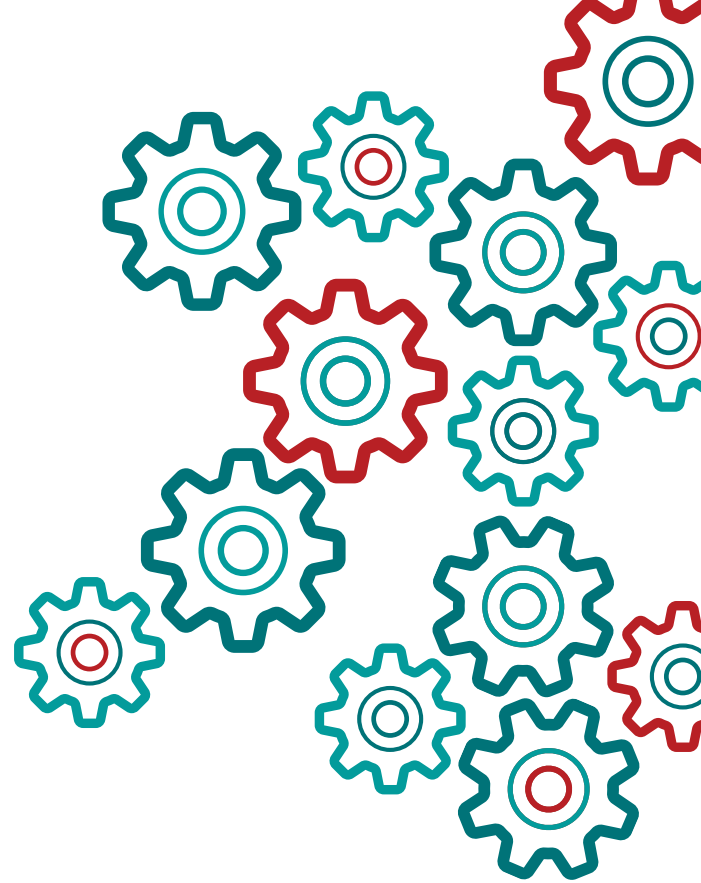
# Thank YOU

**Your support is building  
a more accessible world  
for Kansans with disabilities.**

# Updates from Our Affiliates

## BTCO, Inc.

BTCO has assembled a motivated, skilled team - a mix of people with and without disabilities - who work side-by-side, pooling their expertise to provide solutions in digital document imaging, mailroom operations, data services, and precise-tolerance plot printing. Serving as a model of successful workforce integration in both Wichita and Topeka, BTCO has created a powerful business model that measures success by steady growth in its workforce and customer satisfaction. Starting with a single contract in 2001, BTCO now boasts a wide range of customers, from rural school districts and universities to local/state governments and commercial businesses.



## Center Industries Corporation

Founded by CPRF in 1975, Center Industries Corporation employs approximately 200 people, with more than 75% of the direct labor hours being performed by people with disabilities. Employees specialize in a wide range of manufacturing disciplines, including Boeing 737 window belts, Kansas license plates, metal fabrication, CNC machining, printing, parts assembly, and more. Using assistive technology, Center Industries prides itself on its ability to modify job stations for those with limited mobility.

By creating optimal options for productivity for all employees, CIC can contract with private and public industries on the same level as a traditional manufacturing company. Complementing CPRF's mission, CIC employees are paid competitively with benefits.





5111 E. 21<sup>st</sup> St. N. | Wichita, KS 67208  
(316) 688-1888  
[www.cprf.org](http://www.cprf.org)

    | @cprfoks