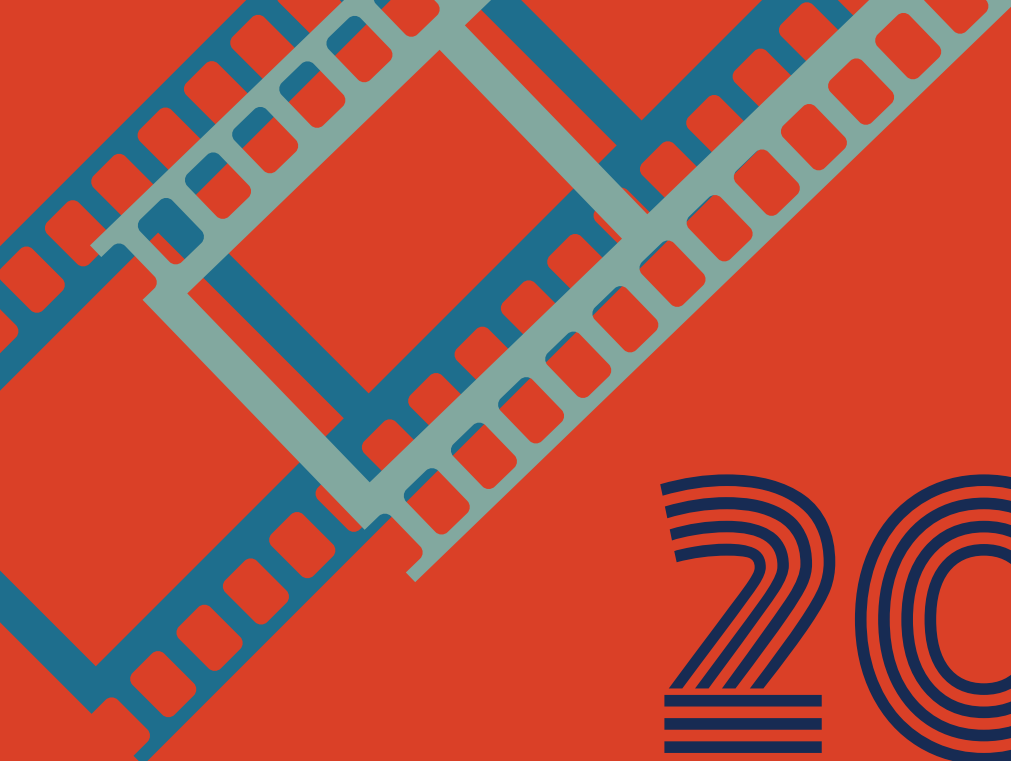


2022 Annual Report



2022

Annual Report

Cerebral Palsy Research Foundation of Kansas, Inc.

CPRF provides people with disabilities of all ages the customized services, support, and technology they need in order to facilitate their chosen personal and economic independence, with an emphasis on employment and training opportunities.

Board of Directors

Chairman

Dan F. Augustin
Real Base Investments

Vice Chairman

Robert P. Daniels

Treasurer

Michael C. Burrus

Secretary

Russell W. Meyer, III
CitationPartners

Patrick T. Jonas

CPRF President and CEO

Dave Jones

Timothy M. Koehler, D.O.

Northwest Family Physicians

Dee Ann McIntyre

Pete Meitzner

Sedgwick County Commission

Linus C. Ohaebosim, D.O.

Daniel J. Taylor

Taylor Enterprises, Inc.

Daniel Taylor, Jr.

Taylor Enterprises, Inc.

Founder

John F. "Jack" Jonas, Jr.

(1931-2014)



The Daniel M. Carney Chairman Awards

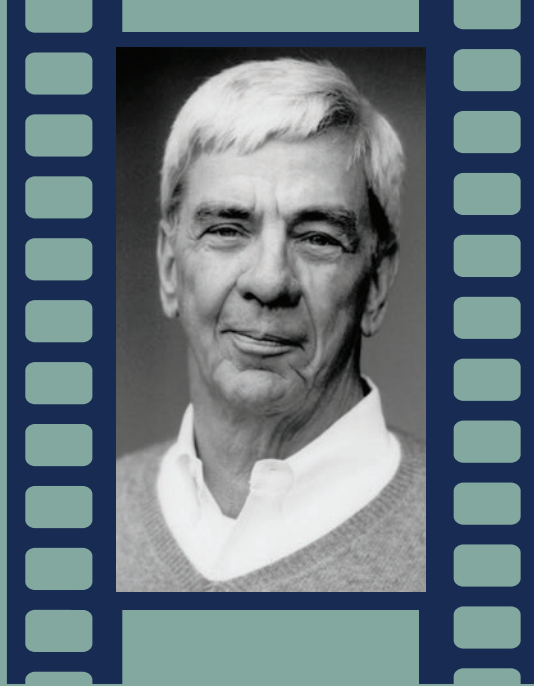
In honor of Daniel M. Carney's 50-year service as CPRF Board Chairman, The Daniel J. Taylor Family Charitable Foundation established this \$500,000 endowed gift. The Chairman Awards will provide funding of up to \$1,000 for medical equipment and assistive technology for up to 20 Kansans each year.

Many people find themselves being forced to pay out-of-pocket for the items they need. These items, such as communication devices, ramps, and wheelchair customizations, help people participate in school, gain employment, and be more independent at home. Their necessity in a healthier, happier life is undisputed, but it is also financially unattainable for most.

Through this award, we look forward to providing more resources for those we serve. Applications open April 1, 2023 at cprf.org/chairmanawards.

Learn more about CPRF's dedicated assistance program, the Equipment Fund, on page 12 of this report.

This award is an endowed gift established in honor of Daniel M. Carney's 50-year service as CPRF Board Chairman.



Thank you for 50 years of leadership, Mr. Carney

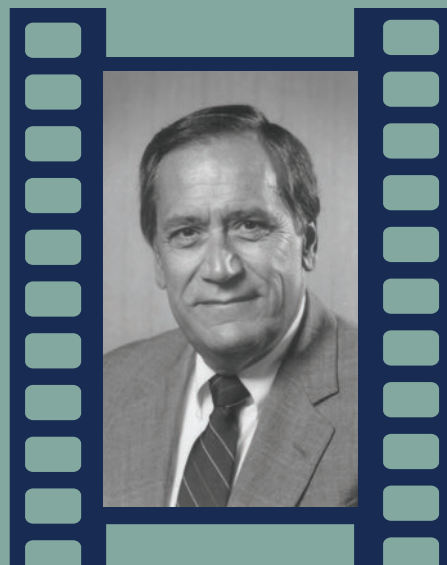
As CPRF Board Chairman for five decades, Daniel M. Carney has been an invaluable part of shaping CPRF's history from the beginning. We are forever grateful for his support of our mission, and wish him the best in his retirement from the board.

"Dan, everybody thinks you'll be remembered for pizzas. But I think you'll be remembered for helping us."
— Pat Kraft | CPRF Client and Center Industries Employee

Other Retiring Board Members



Vivian King
14 years of service



Don Sbarra
32 years of service



Patricia Wilson
23 years of service

Thank you for your steadfast support of CPRF's mission to facilitate independence for Kansans with disabilities.

Notes from Leadership

Dan F. Augustin | Chairman



On behalf of CPRF's Board of Directors, staff, and most importantly those we serve, I would like to thank our many government and community funders, generous contributors, private sector partners, and volunteers who have assisted in carrying forward our mission. I also want to pay a special tribute to recent board retirees Don Sbarra, Patricia Wilson, and Vivian King, along with Mr. Dan Carney, who served as CPRF's one and only Board Chairman for 50 years. We have been supremely blessed and will greatly miss their leadership, generosity, insight, and dedication to those we serve.

As the recently elected Board of Directors Chairman, I am fully aware that I have big shoes to fill. However, I am confident we can continue the many successes of this organization. Although new to the position, I have served on the board for over 20 years and have watched it grow and flourish. I consider CPRF Founder Jack Jonas' and Board chairman Dan Carney's vision as my guide. I am proud to continue their vision to assist in providing integrated employment at a livable wage, accessible housing, and customized supports and services to individuals with disabilities.

CPRF and its affiliates, Center Industries Corporation (CIC) and Business Technology Career Opportunities (BTCO), have been instrumental in creating these opportunities for those we serve. Opportunities that then empower these recipients to become full participants in our community.

I look forward to the coming year and once again, would like to convey my gratitude to all those responsible for advancing the mission of CPRF, past and present.

Sincerely,
Dan

Patrick T. Jonas | President & CEO



We had a great deal to be thankful for this year. CPRF celebrated our 50th anniversary, operations are becoming normalized once again after COVID, we pursued a rebuilding of the Timbers campus, and we've created a new program called Guided Independent Living Assessment (GILA) that helps people who are interested in independent living. Our affiliates, CIC and BTCO, are also resuming employment opportunities to pre-COVID levels. Yes, I believe we have been very blessed this year.

Our successes could not be achieved without the tremendous support from our dedicated board, talented staff, generous donors, corporate partners, and volunteers. Our partnerships and collaborations with federal, state, and county governments, as well as local and statewide community funders like the Workforce Alliance and United Way organizations have also been beneficial to us, to name a few. We are truly grateful to all.

The year also brought about a changing of the guard for the CPRF board. Several spectacular members retired after many years of dedicated service: Don Sbarra, Patricia Wilson, Vivian King, and Mr. Dan Carney. I would like to extend my greatest appreciation to every member, especially to Mr. Carney — a dear friend of my father's, Jack Jonas, who founded CPRF in 1972. Mr. Carney served 50 years as Board Chairman. We will miss them all greatly.

I would like to welcome Dan Augustin, a man who has been a champion of this organization's mission and a board member for decades, as our new Board Chairman. Dan was instrumental in moving Center Industries into the modern era of manufacturing and has an acute awareness of my dad's vision.

Finally, to all of the CPRF Board Members whose dedication, generosity, and guidance have allowed the mission to grow to new heights, I would like to thank each of you.

For those who we have the privilege to serve, we look forward to a prosperous new year!!!

God Bless,
Pat





Mobility

Wheelchair & Posture Seating Clinic

Our Wheelchair & Posture Seating Clinic addresses the needs of adults and children with physical disabilities, building custom chairs that suit the needs and lifestyle of each individual. Designed to enhance comfort, provide better body alignment, and minimize the risk of pressure sores, our seating systems range from manual chairs to intricate power wheelchairs. Physical and occupational therapists are on staff to work with each client to ensure that we build the best seating system possible. All of our wheelchair seating systems are built in-house by technicians with decades of specialized experience. Technicians and therapists work together to ensure each client receives the best chair for their optimal mobility, comfort, and independence. Our partnerships and support from Sedgwick County, Kansas Department of Health and Environment Services for Children with Special Health Care Needs, United Way of the Plains, regional United Way organizations, and generous donations make it possible to offer the clinic as a valuable statewide resource for clients.



804 clients

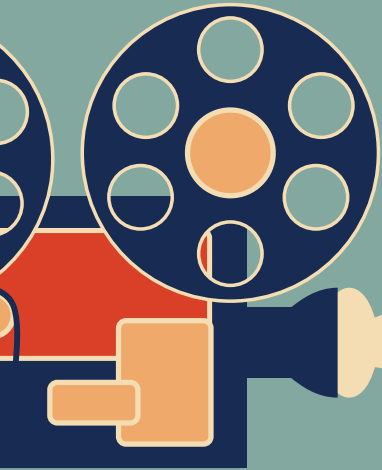
478 received new seating systems or modifications

55 counties served



Equipment Fund

The CPRF Equipment Fund is a resource for people with disabilities throughout Kansas who need referral services, information, or financial assistance for medical devices and assistive technology. Through this program, CPRF creates funding packages for items such as power wheelchairs, van lifts, home modifications, video magnifiers, cranial molding helmets, ramps, lift chairs, and much more. Many assistive equipment devices can be costly and often present a financial hardship for individuals and families. CPRF's partnerships and support from Sedgwick County, Kansas Rehabilitation Services, United Way of the Plains, regional United Way organizations, the Christine & Dan Giroux and Zack Steven Empower Kids ICT Fund, and generous donations ensure our Kansas families receive the equipment they need.



413 clients

236 devices purchased

62 counties served

Exercise & Wellness Program

The CPRF Exercise and Wellness Program promotes fitness for people with disabilities through strength training, improving flexibility, and pain-controlling exercises. Our Certified Restorative Aide works under the direction of an occupational therapist in our private gym on the Timbers campus. Our equipment includes parallel bars, standing frames, hand cycles, a para-gym, an elliptical, a cardio strider, and more. CPRF partners with United Way of the Plains and Sedgwick County to provide these services to those with disabilities in our area.



1,425

individual sessions









Support

Adult Day Services

Our Adult Day Services team ensures that each client's individual needs are met every day. With amenities and activities such as an accessible garden in our private courtyard, a wheelchair swing, sensory room, private swimming pool, community outings, and many other indoor learning and recreation opportunities, our clients have a variety of stimulating activities from which to choose. We are able to offer these options thanks to the help of generous volunteers and supporters such as the Sedgwick County Master Gardeners, Wichita State University School of Music, and many other community organizations. Caregivers can be confident that we provide their loved ones with excellent care.

768

activities

256

on-site classes

Case Management

Our case managers coordinate services for over 100 individuals with disabilities each year, focusing on advocacy, service provision, locating resources, funding, and helping clients understand their rights and responsibilities.

107

clients served



Timbers Apartments & Timber Lines Transportation

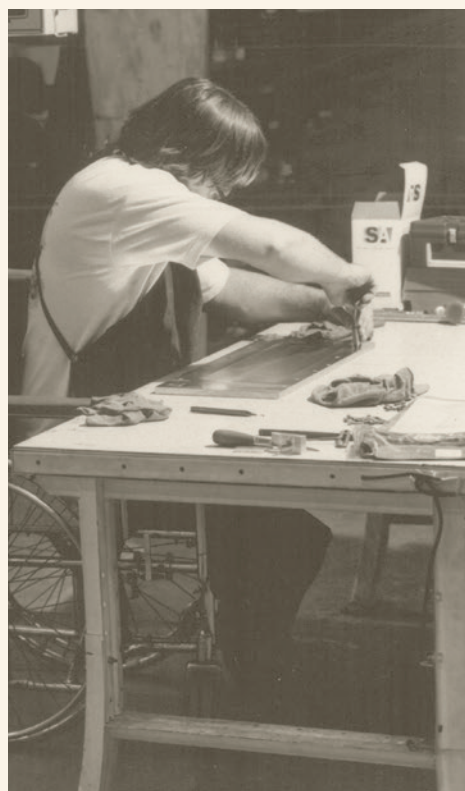
The Timbers is a 100-unit apartment community for people with physical disabilities, featuring roll-in showers, roll-under sinks and counters, accessible switches, and more. In addition to these amenities, the Timbers also has three FEMA tornado shelters throughout the campus. Our wheelchair-friendly, open concept apartments and facilities make it possible for our residents to live life how they choose. Craft and book clubs, community guest speakers, and other engaging social activities allow residents to connect. Timber Lines Transportation provides wheelchair-accessible rides to help residents and community members keep medical appointments, go to work, and more. Timber Lines Transportation is supported by United Way of the Plains and Wichita Area Metropolitan Planning Organization.

124 residents **3,736** rides provided

Guided Independent Living Assessment (GILA)

The GILA program assesses the readiness of young adults with disabilities to live independently, with real-life opportunities to learn and demonstrate basic living skills. Developed in conjunction with Wichita State University, this six-week program provides a plan for future success. Participants live at The Timbers, an accessible 100-unit apartment community owned by CPRF. Classroom instruction is presented on-site at CPRF, as well as off-site at the Independent Living Resource Center. For young adults with disabilities and their parents/caregivers, living independently can come with great concerns. These concerns often keep people at home after they reach adulthood and can prevent them from achieving their independence goals. This program addresses those reservations and provides valuable insight into how prepared a young adult is to live independently.







Employment

Job Placement

The CPRF Job Placement department guides people with various vocational barriers to the right position through employer networking, job tours, resume development, mock interviews, and application and job search assistance. Through Ticket to Work, Vocational Rehabilitation referrals, and our Youth Transition Program, we work with clients individually to ensure they find a job that suits their career goals and abilities. Work experiences are available for youth to explore job interests and for employers to evaluate candidates, ensuring the right fit. Our staff further assists in educating youth on financial literacy, leadership, employer's expectations, current labor market information, and what to expect from the jobs they seek.



138 clients

45 partnered employers

38 work experiences

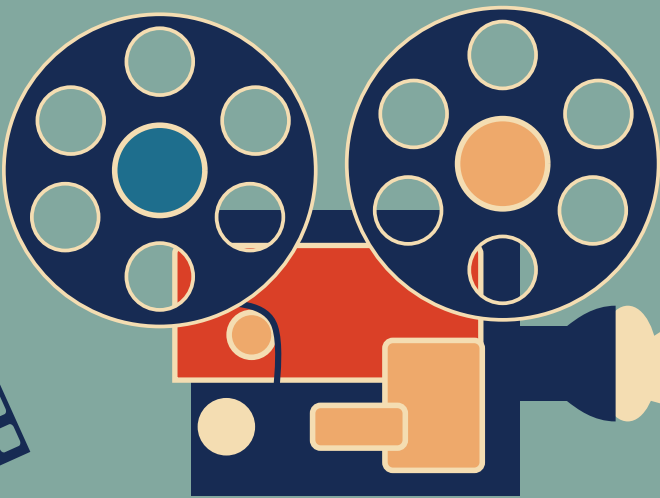
Vocational Assessment

Our Vocational Assessment team administers tests to measure aptitudes, skill levels, abilities, interests, work values, and more. The results generate a variety of potential careers and/or training programs that would suit the client. Our one-on-one approach ensures clients receive more precise employment recommendations, which can reduce job-related dissatisfaction and turnover rates.



School of Adaptive Computer Training (SACT)

The SACT is devoted to improving job-marketable skills for people with disabilities. In addition to our Microsoft-approved curriculum and Microsoft suite certifications, we offer courses in computing essentials, work readiness, and customer service. We offer in-person and virtual classes for high school students with disabilities to learn valuable workplace skills and earn Microsoft certifications in Word and Excel while earning school credit. In 2021, a new youth Work Readiness and Customer Service Class was launched and 13 high school students attended this new program. Since the youth program began in 2008, 482 high school students with disabilities have graduated from the program and 84% have passed at least one Microsoft Certification exam in certification classes. In 2022, the SACT also launched a new program providing Excel certification classes to military spouses. Since opening in 1999, the SACT has served over 1,700 adult students with disabilities.

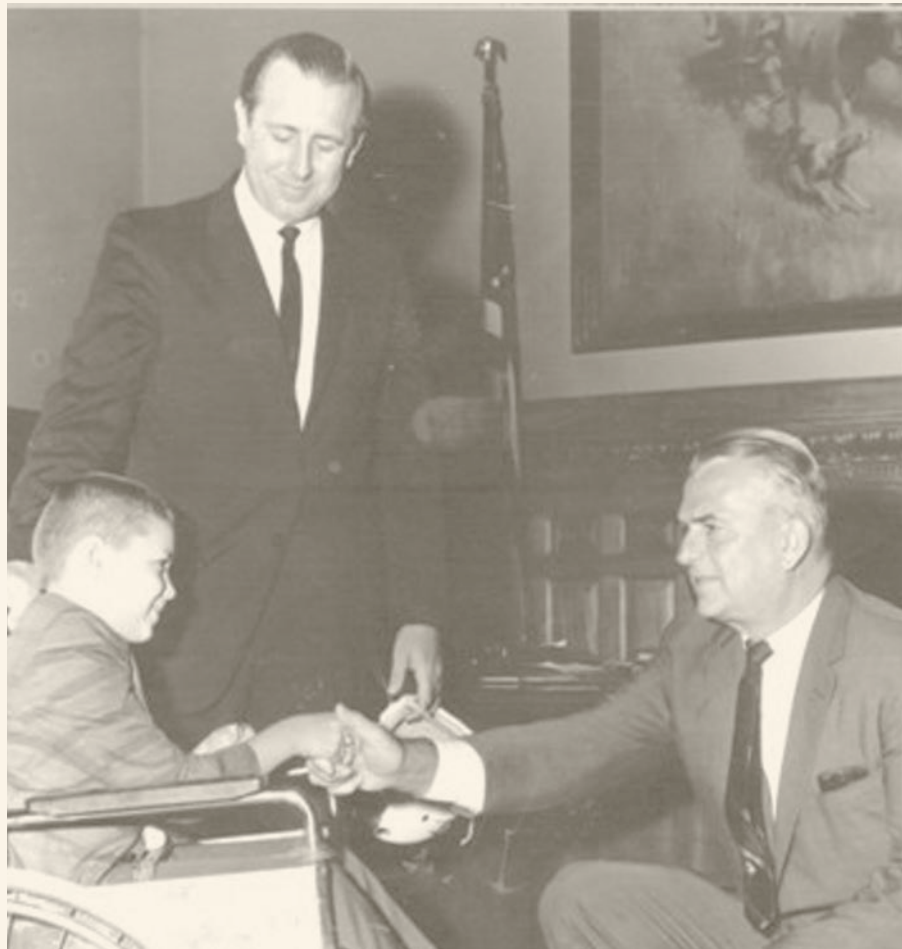


54 students
102 classes taken

Janitorial Services

The Janitorial Services program allows CPRF to offer more integrated employment opportunities for people with disabilities. This program provides part-time and full-time work with competitive wages and health benefits in the porter and janitorial fields. Our services include: floor cleaning, trash removal, dusting, window cleaning, porter/matron services, and other routine cleaning duties.





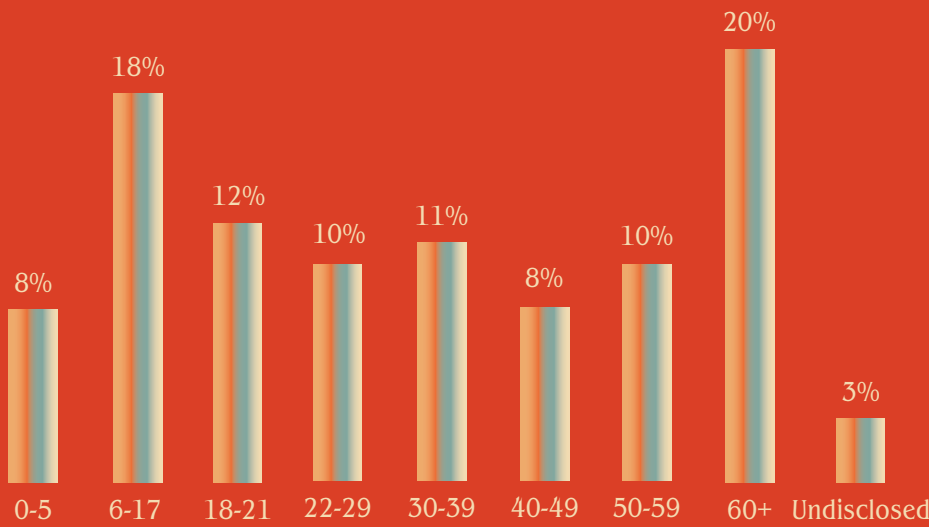
**50 years of Jack's vision,
here's to many more.**



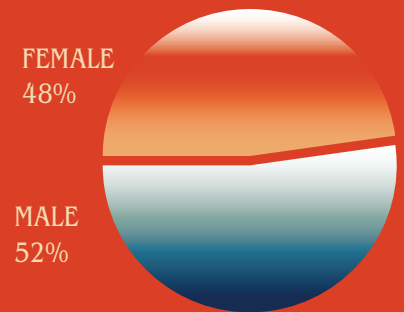
1 3 9 7

Kansans Served

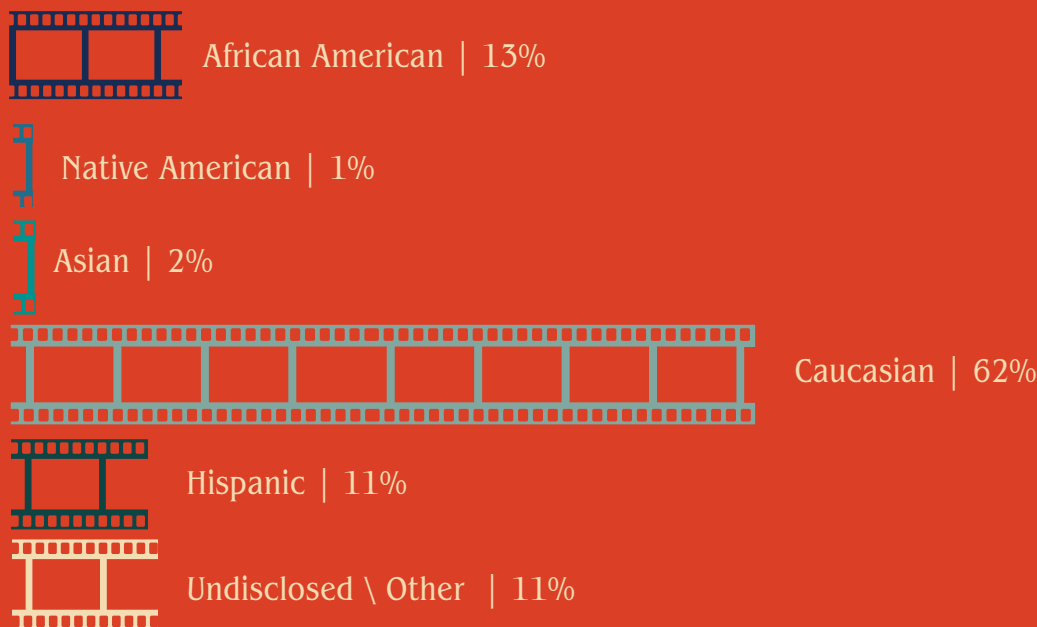
Age



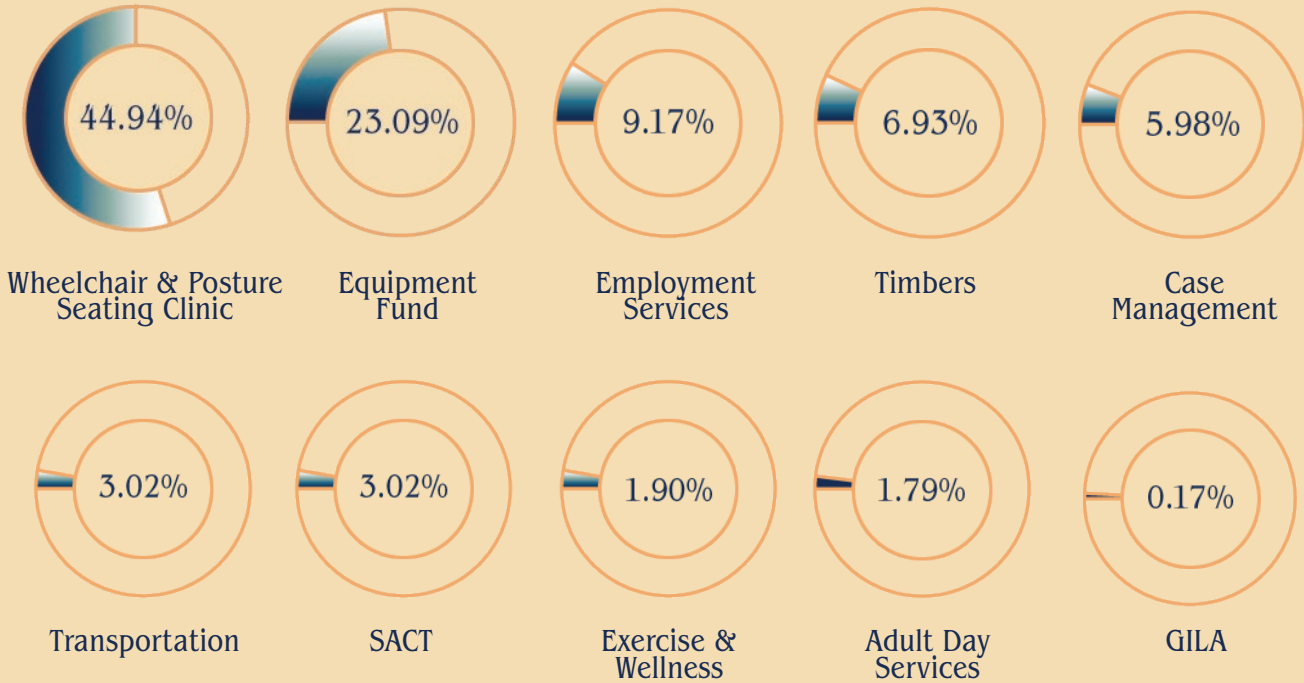
Gender



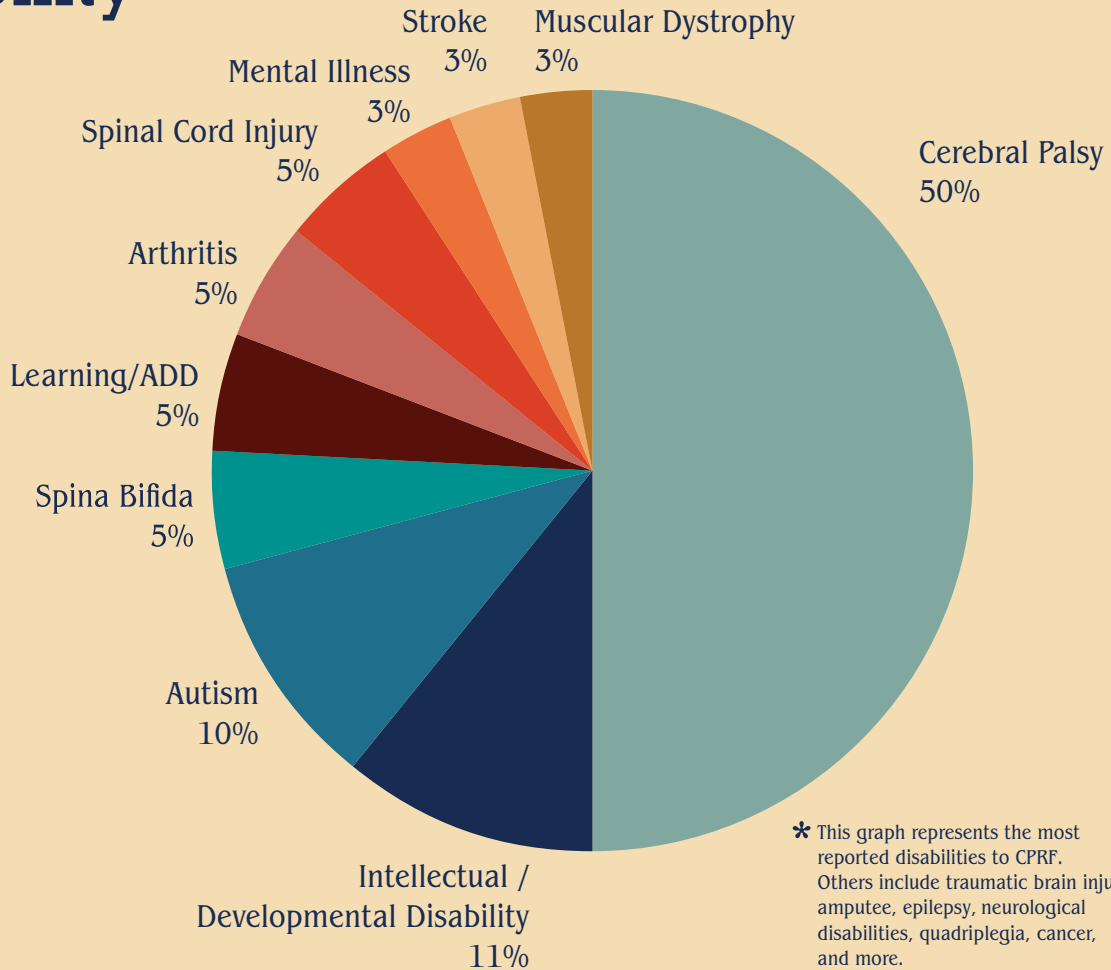
Race & Ethnicity



Program / Service Used



Primary Disability*

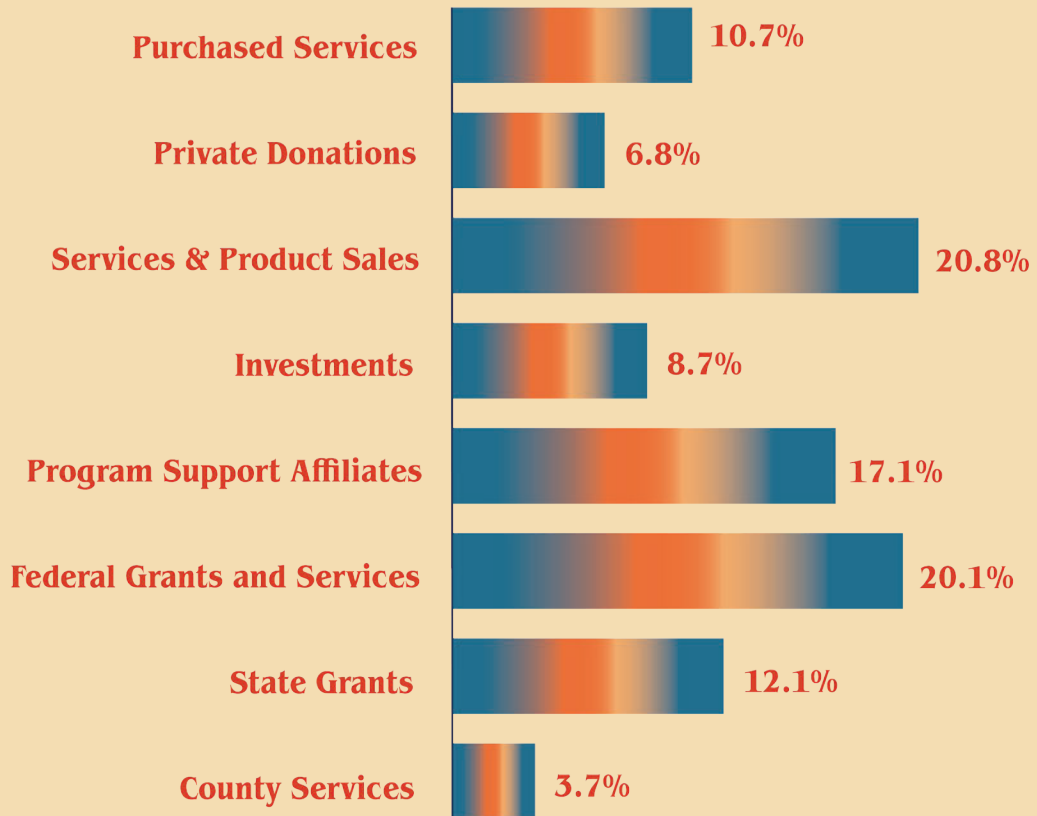


* This graph represents the most reported disabilities to CPRF. Others include traumatic brain injury, amputee, epilepsy, neurological disabilities, quadriplegia, cancer, and more.

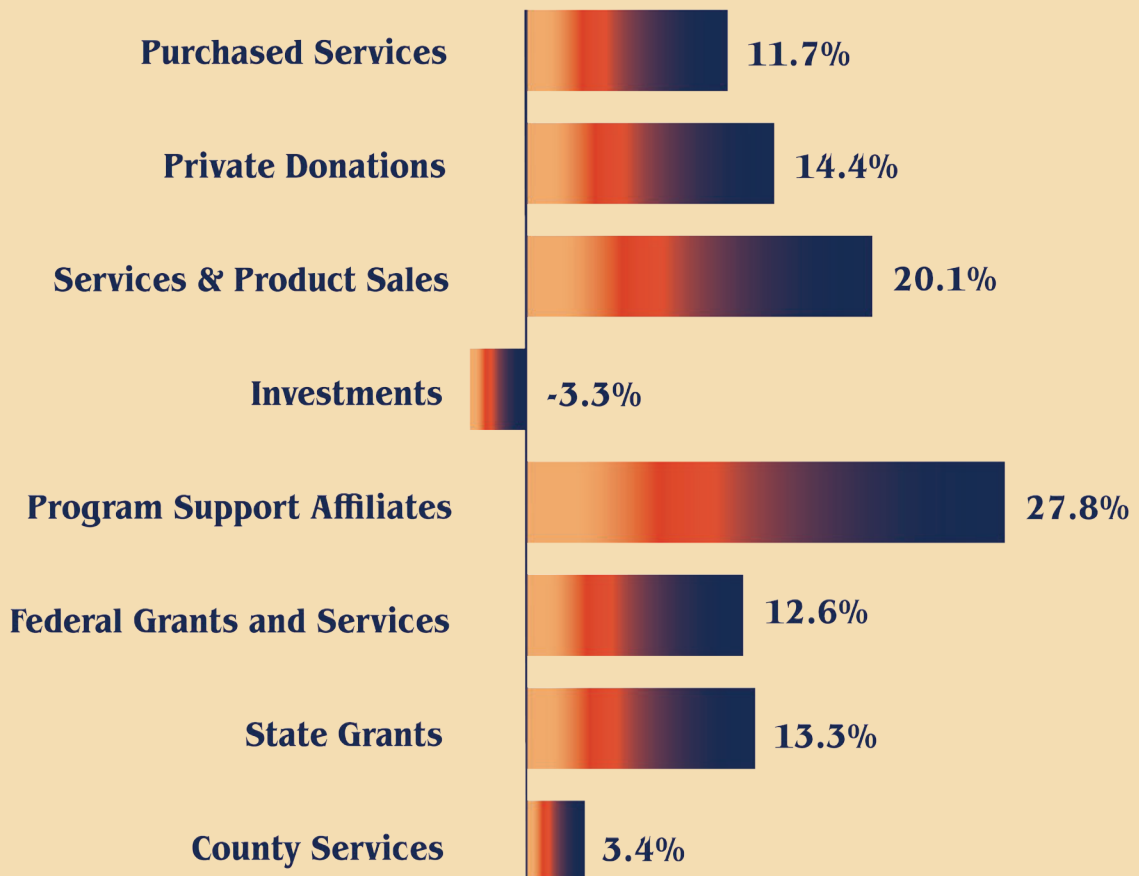
Demographics

Revenue & Support

2
0
2
1



2
0
2
2



Program Expenditures



Financials

Combined Abbreviated Statement of Financial Position

	2021	2022
Current Assets	\$ 6,881,833	\$ 6,982,926
Non-Current Assets	\$ 546,488	\$ 664,448
Net Capital Assets	\$ 8,696,440	\$ 9,208,776
Current Liabilities	\$ 562,849	\$ 714,778
Non-Current Liabilities	\$ 1,655,329	\$ 2,278,760
Combined Net Assets	\$ 13,906,583	\$ 13,862,612
TOTAL ASSETS	\$ 16,124,761	\$ 16,856,150
Undesignated	\$ 10,539,267	\$ 10,184,107
Board Designated	\$ 1,585,365	\$ 2,284,897
Donor Restricted	\$ 1,781,951	\$ 1,393,608

2022

**River City Roll:
A Golden Gala**

Thank you to all those who supported us at our 2022 River City Roll. The event coincided with CPRF's 50th anniversary, raising \$315,565. The biennial event was emceed by Julia Thatcher, KSN News Anchor, with 176 Keys Dueling Pianos providing fun, interactive entertainment. Guests enjoyed live and silent auctions, dinner, drinks, and dancing. This event supports statewide efforts of CPRF's Wheelchair & Posture Seating Clinic and Equipment Fund.



Thank you to all of our amazing sponsors!



Friesen Tool Co., Inc.



Berry Foundation | Capitol Federal | Devlin Enterprises | Farha & Son Enterprises
Foulston Siefkin LLP | Hall's Culligan Water



2022 Jack Jonas Spirit Awards



Jack Jonas, CPRF Founder, dedicated his life's work to serving and advocating for an underrepresented population, creating an organization based around the principle that everyone, regardless of their physical abilities, has the right to an education, a career, and independence.



In honor of Jack's legacy, CPRF established the Jack Jonas Spirit Award to recognize three employees each year who have shown dedication to the CPRF mission and who truly have a heart for those we serve.

The award winners receive a commemorative plaque and a check for \$1,000 each.

CPRF, CIC, and BTCO employees are eligible for the award.



CPRF | Daniel Jenkins

Shop Technician and Scheduler

Daniel has been a technician at the Seating Clinic for over 15 years. He is always bright and cheery when he comes to work. He exhibits a team-first attitude with all his fellow employees. When the Occupational Therapists and Physical Therapists are struggling with the work load or need advice on how to better serve their clients, Daniel is the first to ask "How can I help?" This is always done with a genuine smile and the desire to assist.

Where Daniel really shines is with the Wheelchair Clinic's clients. He has a loyal group of what we call "fan club members" who will ask for Daniel by name. This is because Daniel often performs the fitting check-outs with them and gets to know them personally. He goes above and beyond in explaining each component and accessory in detail with the clients, their families, and their caregivers. He is passionate about ensuring that each client understands what they are getting, why they are getting it, and how it works. This care and concern is reflected in the consistently positive feedback the Wheelchair Clinic receives from clients and their families.

Another place that Daniel shines is on the road. When a tech is required to accompany the occupational therapist to one of our two satellite seating clinics, Daniel organizes all the tools and delivery items so that the clinics can run efficiently. He is a pleasant traveling companion and is always willing to drive home after a long day of seeing clients.

In the last couple years, Daniel has also taken on the additional responsibility of helping schedule clients for their fitting and modification appointments. He brings his unique knowledge and his passion to help people while learning this often difficult task. Daniel also takes the time to work with the PR department to help identify clients for testimonials, and he and his wife volunteer for all the events that CPRF throws, including Milk and Cookies with Santa, Fall Fest, and River City Roll.

Congratulations, Daniel!



BTCO, Inc. | Chris Ronnfeldt

Document Specialist

Chris was nominated by his coworkers for his caring personality and willingness to always help his peers. He's been known to assist coworkers with getting on the bus at the end of a workday for their commute home. He has a strong work ethic and is committed to the success not just himself, but the entire team he works with. He is a joy to be around, has a wonderful sense of humor, and goes out of his way to make sure everyone enjoys being at work. His good energy is contagious.

Chris, Thank you for your positivity and for being such an ally to your coworkers.



CIC | Walter L. Burdg

Supervisor



Walter's kindness comes in many forms. He's helped set up a wheelchair ramp at someone's home while they recovered from surgery and assisted another co-worker with compression wraps on evenings and weekends. If someone is without transportation, they can always catch a ride with Walter. As a supervisor he is a great teacher, and instills confidence in others. He goes out of his way to help his co-workers realize their potential.

Walter, thank you for serving as an example of compassion and leadership for your team.

2022

Peter John

Loux Award



The Peter John Loux Award provides an annual recognition gift to a Kansan who demonstrates exceptional desire and dedication in overcoming their disabilities.

Any Kansas resident 18 years of age or older with a congenital or acquired physical or neurological disability may be nominated by another person or apply on their own behalf. Each Peter John Loux Award winner receives \$1,000 and a commemorative plaque.

The award is an endowed gift established by the late Richard C. "Pete" Loux in memory of his son, Peter John. Mr. Loux, a lifelong advocate for people with disabilities, used his influence as the Kansas House of Representatives Minority Leader to help launch Center Industries Corporation in 1975. He also served on the CPRF Board of Directors from 1972-2004.

For more information about the Peter John Loux Award, contact Debbie Hersh at dhersh@cprf.org.

Sondra Criddle | Oswatomie, KS

Sondra was born in 1965 and diagnosed at a very young age with adjustment disorder and a learning disability.

Sondra began receiving Tri-Ko's services in 2001. Her goal when she came into Tri-Ko's services was to live independently and work a competitive-wage community job. That same year, Sondra was hired at Paola Middle School to work part-time in the cafeteria. In 2021, she celebrated her 20th anniversary of working at the school.

According to Joshua Lankton, who nominated Sondra for this award, "she continues to be a dependable, well-rounded employee, so much so that she was asked to work an extended school year during the summer school session. She has successfully and consistently met her goal of working a competitive wage community job."

Sondra has overcome huge obstacles. She has maintained a competitive wage job and raised two children as a single mother. In 2010, she and her two children moved into a two-bedroom duplex in Oswatomie. Now that her children are adults, she currently lives independently. She is solely responsible for the daily upkeep to maintain a clean home and she does a great job, as her home always passes house inspections.

Sondra raised her two children, Destiney and Joshua, to be thoughtful, well-rounded adults and she sees her daughter almost every day. She is also a responsible pet owner of two therapy cats.

According to Heather Wier, Tri-Ko Director of Case Management, Sondra has been an inspiration in her determination toward meeting her employment goals and independence in her home.

She went on to write that what is impressive about Sondra's progress is her perseverance. She has an intellectual disability and has endured many hardships throughout her life, but she has never stopped working toward her goals of achieving personal independence.

She is still working, thriving, and living on her own with minimal support needed.

Sondra remains enthusiastic about someday achieving her goal of purchasing a home of her own.



“Sondra’s lifetime record of achieving independence is extraordinary.”

— Heather | *Tri-Ko Director of Case Management*

Honor Roll of Donors

Thank you to all of our generous donors. Your support allows us to continue our mission and diverse programming, serving Kansans with disabilities throughout the state.

This list reflects contributions made from July 1, 2021- June 30, 2022

John F. Jonas Award

Recognizing donors who contributed \$200,000 in a lifetime, or \$1 million through a deferred gift.

Anonymous	INTRUST Bank	*Helen and Russell Meyer, Jr.
Bank of America	+Evalyn B. Joachim	Lynn and +Robert Moore
Rita and Gene Bicknell	William T. Kemper Foundation-	Patricia Wilson and +Bob Patterson
The Boeing Company	Commerce Bank, Trustee and	+Carl Rohwer
City of Wichita-HOME	Commerce Bancshares	Susan and +Les Rudd
Investment Partnership	Foundation	Sandlian Realty
Program Grant	The Kresge Foundation	Donald D. Sbarra
*Robert Daniels	Lattner Family Foundation Inc.	+Pat and +Bob Schmidt
Myra and Tom Devlin	Dwane L. and Velma Lunt Wallace	Sandi and Brad Schreck
EDS Foundation	Charitable Foundation	Sally and +Bill Simon
EDS Corporation	The J. E. & L. E. Mabee	Kate and Dan Taylor
Federal Home Loan	Foundation	Kenneth J. Wagnon Foundation
Bank of Topeka	McIntyre Foundation	Alice and Dale E. Wiggins

Chairman's Award

Recognizing donors who contributed \$100,000 in a lifetime, or \$500,000 through a deferred gift.

Larry and +Sally Arbuckle	Maura and Bob Geist	Raytheon Aircraft Company
Cessna Foundation	Dane G. Hansen Foundation	Diane and +Darrel Rolph
EOG Resources, Inc.	Microsoft Corp.	Mary Ann Skolaut
Fred C. and Mary R. Koch	Mary Lynn and William L. Oliver	
Foundation		

Founder's Award

Recognizing donors who made an outright gift of \$10,000 or more, \$50,000 in lifetime, or \$250,000 through a deferred gift.

+Virginia and +George Ablah	Candlewood Hotel	Barry L. and Paula M. Downing
Anadarko Petroleum Corporation	Michael D. Carney	Foundation
Anonymous	Cessna Aircraft Company	Employees Community Fund of
Bailey Lauerman	Champions for Charity	Boeing Wichita
*Michelle Becker	Steve Clark	Emprise Bank
Beech Charitable Gift Fund	Davis-Moore Auto Group	eoVision
*Becca Bohl Trust	DCSS Ability, LLC	Nellie F. Estes Testamentary Trust
Bombardier Learjet Care Fund	DeVore Foundation	Gladys M. Evans Testamentary
Sherry and +Bernie Butler	Digital Consulting & Software	Trust
Bernie Butler Family Foundation	Services, Inc.	EVCON Industries Inc.

Fahnestock Plumbing, HVAC & Electric

*Kathy Feist Family Endowment
Fran Jabara Family Foundation, Inc.
Goodwill Industries of Kansas, Inc.
Gossen Livingston Associates, Inc.
Grand Chapter of Kansas Order of the Eastern Star
Libba and Wink Hartman
Veryle Heriford Estate
The Roy and Myrna Jo Herren Giving Fund, A Donor Advised Fund with The Signatry
+Dan Hesse
Sherri and +Larry Hiebert
Edna Hightower Estate
Beverly and +John F. Jonas
+Lilan Kane
Kansas Health Foundation
Key Construction, Inc.

John S. & James L. Knight Foundation
Koch Industries, Inc.
Joanie and Tim Koehler
Rex C. & Marie Elizabeth Larabee Trust
Rose Lichtenstein Estate
+Richard C. "Pete" Loux
Dee Ann McIntyre
Multimedia Cablevision
Multimedia Foundation
The Victor Murdock Foundation
*Martha and Robert Neidhart I.A. O'Shaughnessy Foundation
+Mary Jean and +Larry Payne
POET Biofuels
Profit Builders
June and +Patrick Regan
The Darrell and Dee Rolph Family Fund, a Donor Advised Fund of The Signatry

Salesforce.com, Inc.
SBC Foundation
Robert E. and Patricia A. Schmidt Foundation
Anita and +Deryl Schuster
*Tom and Donna Shirley D/A Endowment
Signal Theory
*Jake Simon Trust
*Stephanie Simon Trust
Standard Beverage
The Sunderland Foundation
United Methodist Health Ministry Fund
Kate and Bill Walsh, Jr.
Westar Energy Foundation
*Wichita Community Foundation
Wichita Greyhound Charities, Inc.
K. T. Wiedemann Foundation
Winter Enterprises

Heritage Award

Recognizing donors who made an outright gift of \$5,000 or more, \$25,000 in lifetime, or \$100,000 through a deferred gift.

*Adams Brown
Gladys and Buck Alley
American National Bank
Dot and Dan Augustin
The Barton Foundation
Debbie and Arlin Beer
Bicknell Family Foundation Fund
Brockmeyer, Inc.
BTCO, Inc.
*Anne Buford
Burnham Products
Kathy and Mike Burrus
Yolanda and Gene Camarena
Cindy and Matt Carney
Janie and +Frank Carney
Arlo and Bob Casper
Center Industries Corporation
*CMH Living Trust
*Commerce Bank, N.A.
*Community Foundation of Southwest Kansas
Creative Ventures & Capital, Inc.
Lois and +Jim Daniels

Drs. Karla and Brian Demby
Karissa and Mark Dugan
David Egan
The Fidelity Bank Foundation
First Baptist Church
Janis Friesen
Galichia Foundation
Gannette Foundation
Craig Haines
*Tom & Roberta Harkness Endowment
Nancy and +Richard Hassur
Hawker Beechcraft Corporation
R.D. and Joan Dale Hubbard Foundation
+Lois Huebert
IMA, Inc.
Inter-First Company LLC
Nita and Joey Jackson
Pam and Pat Jonas
Diana and Richard Kasper
+Sandy and +Ben Kasper
Kathy and Herb Krumsick
The Carl V. and Honore G. Maloney Foundation

Nancy and Hal McCoy
Midwest Corporate Aviation
Murfin Inc.
+Norma R. Murphy
Kathleen and Patrick O'Shaughnessy
Prudential Securities
*Sharol and Robert Rasberry
Laura and +Jack Richmond
Gwen and +J.B. Severt
Sharla and Aaron Severt
Pat and Jack Shelton
*Shultz Law Office PA
John Sieber
Connie and Roger A. Sink
+Clifford Stone
Regina and Alex Terick
THORN Americas
Universal Lubricants
Polly and +Patrick Vickers
Vornado Air LLC
*Wichita Gladiator Association

Friends of CPRF

Recognizing donors who supported CPRF with a gift from July 1, 2021 to June 30, 2022.

Jan and Jerry Aaron	Chicken N Pickle	First Place
Acornacopia	Kayson Chong	Tyler Fix
Kim and Keith Adams	Christopher Clark Photography, Inc.	Flint Hills National Golf Club
Trenita Adamson	CitationPartners LLC	Robin and Byron Folkerts
All Star Sports	Clark Investment Group	Mike Forristal
Janis and Mike Alstatt	Deborah and Jerome Clasen	Michael Foster
Amber Waves Diving Co.	Anne Coffin	Bengie and Jack Foster
American Warrior	Brandon Coleman	Tammy and Jim Foulston
Gretchen and Stan Andeel	Coleman Materials, LLC	Foulston Siefkin LLP
Ron Andra	Kay and Cory Conklin	Deb and Bill Frailey
Anonymous	Colette and Kent Conner	Francesca's
Karen Asmann	Hilda and Chris Conrade	Friesen Tool Co., Inc.
Atlas Spring & Axle	Paula and Monte Cook	Frou Frou
Marcia and Ted Ayres	Susan K. Cook	Ardis and Dr. Luther Fry
Brooke and Timothy Aziere, Jr.	Cosmosphere	Marilyn Frydendall
Paul Babich	Kelley and David Cox	Rebecca and Rick Gates
Karen & Tom Balbierz	Richard Cree	Amy and Scott Gepner
Tamara and Bruce Bammel	Tammi Crook	Amy and Craig Gjerde
Lora and Don Barry	CrossFirst Bank	Edward Goldberg
Judy and John Beal	Dena and Mike Dassel	Daniela Gonzalez
Beau Monde Spa and Boutique	Ann and Dr. Terry Davidson	Molly and Roarke Gordon
Adam Becker	Scott Davies	O.S. and Jaclyn Gossard Fund
Berry Foundation	Nikki and Bob Deal	Gould Law Offices Chtd, LLC
Ashika Bhakta	Lisa Dean	Mark Grasse
Mary Birch	Deano's Grill and Tapworks	Great Harvest Bread Co.
Sharon Bishop	Margaret and Todd Dechant	Greater Salina Community
Tony Bose	- 6 Meridian	Foundation
Botanica, The Wichita Gardens	Donavon Decker	Greater Wichita YMCA
Jeremy Bowman	Marlene Dietz	Darcie and Bryan Green
Orleane Bowman	Suzanne Dirks	Sylvia and Larry Green
Judy and James Bradshaw	Discover WSU	Debbie and Joe Grisolano
Trish Brasted	Doc's Friends, Inc.	Vickie Guillot
Nancy and Bob Briggeman	Dean Dreher	Greg Gurley
Bari Bright	Mark Drummond	Victoria and Benjamin Guter
Marla Brockmeyer	Grace Dugan	Judith and Stanley Guyer
Jordan Brungardt	Joanne and Jim Dumler	Jane and Dr. Robert Hagan
Madison Budreau	Sandra Dunlavy	Barbara and John Hagood
Bullseye Shooting Range	Margaret and Randy Ellenz	Hall's Culligan Water
Donna Bunk	Maria and Bill Engelhardt	Arlen Hamilton
William G. Burmeier	Sharon and Bruce Engelland	Nancy and Edward Hampel
Burns & McDonnell	Carrie and Marcus Engels	Deborah and Stuart Hanson
Kenneth Bush	Stephen English	Jane and Randy Harder
Christina Butler	Kathleen Evans	Thelma Faye Harms Trust
Dr. Dan Caliendo	Every	Marjorie Hartman
Sally and Greg Cannata	Exploration Place	Marilyn and Gary Hay
Capitol Federal Foundation	Cheri Fahrback	Patty and Pat Hayes
Karen Carney	Jennifer Farha	William Headrick
Timi Caro	Farha and Son Enterprises	Helen and Edward Healy
Beverly A. Cash	Farmers State Bank	Jennifer and Chris Hearne
George Catt	Kathy Feist Family Endowment	Connie and Rick Heckman

Deann Helton
Jordan Henderson
Helen Henry
Valerie and Joe Hepburn
Paige and Chris Hermann
Antonio Hernandez-Reynoso
David Herrmann
Debbie Hersh
Becky and Kurt Hesse
Gary Hewson
Sherri Hiebert
Mim and Kieth Hiesterman
Deanna and Larry Hillyard
Sherlene Hook
Dianne and Bob Hooper
Susan and Rick Hoppe
Ruth Hughes
Elizabeth Hyder
Rosanne Hylton
The Insurance Guys
Charlotte Iseman
Norah Iseman
Bobbie and Alan Jaax
David Jabara
Sue and Bob Jackson
Jaco General Contractor Inc.
Douglas Jacobs
Louis J. Jacobs
Jake Simon Trust
Mary and Mike Jenkins
Jenny Dawn Cellars LLC
Jimmie's Diner
Mary and Eric Johansen
John A. Ackeret Estate
John Jonas Custom Knives
Michelle Johnson
Johnson's Garden Center
Sally Jonas
Julie and Paul Jonas
Peter Jonas
Ashley and Frank Jonas
Emily Jones
Renee and Vince Jones
Winifred and Dave Jones
Anita Jones
Larry Jones
Jolene and Doug Kaufman
Tricia and David Kaufman
Carolyn Kearney
Carl Keith
Caroline Kelley
Diane and David Kemp
Jeanette and Leland Kemp

Kendra Scott
Glenn Kerbs
Cheryl and Pat Kerivan
Hannah and Rich Kerschen
Lori and Craig Kilian
Vivian and Nick King
Carolyn and Tom Kitchens
Downtown Kiwanis Foundation
KMUW
Jane and Bob Knight
Jennifer Knight
Darlene and Ric Knorr
Mary Frances Koehler
Judy and Tony Kostusik
Janis Krohe, PhD
Christine Kubik Living Trust
Shawna and Shawn Lancelot
James Larsen
Coleen and Larry Larson
Barbara Latta
LDF Sales & Distributing
Dolores Leak
Maryanne Leap
Barb and Mike Lehning
Linda and Greg Leighton
Julie and Doug Lies
Mary Ellen and Kelly Link
MeleLani Llanes
Vanessa and Chuck Lohf
Gale Lohrmeyer
Toni and Roger Lohrmeyer
Lonetta Lollar
Joann Louis
Merna Loux Kermott
Julia Lynn Lucas
Vivian and Mike Luft
Brandon Mabry
Julie and Buell MacArthur
Rosemary and Donald J. Malone
Jeanine and Mike Maloney
Diane Mann
Joan E Marcotte
Mark Arts
Dee Marsh
Michael Martinez
Deborah and David Mason
Rachel Massa
Donna and Kim Mastalio
Norma Jean Masterson
Georgia and Danny Maxwell
Yonnie and Mark McAfee
Luann McCullough
McDonald's - Razorback, Inc.

Joann and Ron McDowell
Dwight McGehee
Donna and Don McGinness
Janet and Phyll McGonigle
Cher and Sean McLachlan
Tamara and Greg Meisel
Suzi and Peter Meitzner
Lisa and Alex Meitzner
Shirley Mendoza
Mennonite Friendship Communities
Inc.
Ruth A. Meyer
Janet and Russell W. Meyer III
Tona and Dr. Michael Schekall
Leisa and Rocky Milford
Michelle Miller
Dawn and Brad Minear
Mission Thrift Shop
LeeAnn Moats
Joyce Morgan
Marlane and Jack Morris
Krista Morrissey
Mosley Street Melodrama
Erin and Josh Mossbarger
Museum of World Treasures
Pat Myers
Kay and Charles Myers
National Seating & Mobility
Nancy and Mike Oldfather
Joan and Kalin Omo
Amelia Ornelas
Mark Orvis
Kathy and Patrick O'Shaughnessy
Terri & Rick Osman
Grant Paitz
Lisa and John Pennella
Steve Peterson
Nancy and William Porter
Jill and Duane Poynter
Kianne and Shane Prill
+Robert Pugh
Becki and Tom Racunas
Lynda Rathbone
Colleen and John Reals
ReeceNichols
Ron Reed
Gail and Steve Reinemund
Family Foundation
Cari Reiss
Cathy and Delbert Resser
Pam and Tom Rogers
Barbara and David Rolph
Steve Rose

Roxy's Downtown
Rudd Oakville Estate
Carol Rundell
Pat and Judy Rundle
Jocelyn and Bruce Rundle
Ruth Ryan and Brittany
Saint, Inc.
Salem Community Church
Sam's Club
Tara Saylor
Andrew Scheck
Mary and Andy Schlapp
Robert Schmidt
Schreck Financial Group
Donald Schultz
Pat and Don Schwartz
Peggy and John Schwendeman
Gayla and Kevin Schwertfeger
Micki and Aaron Seager
Security 1st Title, LLC
Sedgwick County Zoo
Kathy and Dr. Eric Sexton
Gretchen Sharp
Kathi Shaw
Margaret and Mike Shepherd
Colby and Tobi Sheridan
Jamee and Jeremy Sholtz
Nancy and Mike Shonka
Dara Shumard
John Sieber
Kathy and Jim Siebert
Diane and Kelly Siefkes

Sierra Hills Golf Club
Silver Dollar
Capper Foundation
Skyward Credit Union
Stacy and Scott Smith
Helen Smith
Gary Sobba
Spangles
Standard Beverage
Patrick Stang
Anika Stewart
Rich Stinnett and Charles Robinson
Geri and Rick Stinson
Marni and David Stone
Strataca
Whitney and Jamie Stratton
Rita and Randy Stucky
Patty Stuever
Lisa and Bob Stuever
Jennifer and Kevin Suminski
Jordan Swan
Samantha and Roby Swan
Tallgrass Film Association
Monica and Steven Taylor
Paul Taylor
Susan and Dan Taylor Jr.
Judy and Pat Terick
Textron Aviation Inc.
The Docking Group, RW Baird
The LBD, Etc.
The Spice Merchant and Company
Polly and Brooks Thompson

Barbara Thompson
Dyan and Dave Thornton
Christie and Tom Triplett
Molly and James Tully
Anna and Dr. Paul Uhlig
Geri and Anthony Unruh
Cary Utz
Valley Offset Logistics
Kathleen and John Baker
Van Saun
Mrs. G.H. Waitt, Jr.
Rocky Waitt
Walmart
Gwen Ward
Candace and Martin Ward
Sue and Kurt Watson
Christine and Blake Wells
Lisa and Bob Whiteman
Wichita Fire Department
Wichita Thunder
Kevin Wilmoth
Winfield Kiwanis
Anne and William F. Woods
WSU Alumni Association
Kelly Wynn
Che Keung Yim
Yingling Aviation
Carolyn Yock
Crystal and Chad Young
Paula and Eric Zoller

Memorials

Recognizing contributions made in memory of a loved one.

John Ackeret

Estate of John A. Ackeret
- Marisa Ackeret

Linda Algrim, in honor of Tinley

Mike and Janis Alstatt
Deboarh and Jerome Clasen
Sharon and Bruce Engelland
Cheri Fahrback
Barbara and John Hagood
Julie and Buell MacArthur
Georgia and Danny Maxwell
Janet and Phyll McGonigle
Cher and Sean McLachlan
Mennonite Friendship
Communities Inc.

Salem Community Church-Salem
W.W.T.
Donald Schultz
Gayla and Kevin Schwertfeger
Diane and Kelly Siefkes
Silver Dollar
Stacy and Scott Smith

Don and Joy Bergkamp

Michelle Becker

John Patrick Bowman

Orleane Bowman

Luke Brandon

Brandon Mabry

Jeff Brockmeyer

Trenita Adamson
Ruth Meyer
Leisa and Rocky Milford
Monica and Steven Taylor

Joe Bunk

Donna Bunk

Richard Cole

Marcia and Ted Ayres

Jack DeBoer

Anonymous

Sara Eckhart

Sandra Dunlavy

Wilbur Elsea
Stephen English

Christopher Paul Foster
Maria and Bill Engelhardt
Bengie and Jack Foster
Mary and Eric Johansen
Linda and Greg Leighton
Dee Marsh
Lynda Rathbone
Jordan Swan
Gwen Ward
Candace and Martin Ward

Jesica Gainer
Merna Loux Kermott

Esther Green
Sylvia and Larry Green

Barry Harris
Helen Smith

Larry Elliott Hiebert
Sherri Hiebert

Joe Higgins
Kay and Charles Myers

Matthew Jacobs
Louis Jacobs

Melissa Whitmore Johnson
Atlas Spring & Axle

Eileen and Jack Jonas
Pam and Pat Jonas

Jack Jonas
Victoria and Benjamin Guter
Barbara Latta
Donna and Don McGinness
Mary Ann Skolaut

Jerry Jonas
Victoria and Benjamin Guter
Sally Jonas
Barbara Latta
Jill and Duane Poynter
Mary Ann Skolaut

Joseph Jonas
Marla Brockmeyer
Jane and Dr. Robert Hagan
Mim and Kieth Hiesterman
Mary Frances Koehler
Joanie and Dr. Tim Koehler
Nancy and Mike Oldfather
Nancy and William Porter
June Regan
Judy and Pat Terick
Polly and Brooks Thompson

Sanderina and Benjamin Kasper
Diana and Rick Kasper

Dottie Kasper
Pam and Tom Rogers

William Keltner
Barbara Latta

James (Jim) W. Latta
Victoria and Benjamin Guter
Barbara Latta

Nettie Llanes
MeleLani Llanes

Jacob Lohf
Vanessa and Chuck Lohf II

Austin Lollar
Lonetta Lollar

Peter John Loux
Merna Loux Kermott

Richard Loux
Merna Loux Kermott

Bill Mansfield
Barbara Latta

June Eileen McGrath
Jan and Jerry Aaron
Karen Asmann
Judy and John Beal
Commerce Bank, N.A.
Paula and Monte Cook
Susan Cook
Marjorie Hartman
Elizabeth Hyder

Rosanne Hylton
Anita Jones
Emily Jones
Christine Kubik
Maryanne Leap
Joann Louis
Jeanine and Mike Maloney
Joan Marcotte
Deborah and David Mason
Norma Jean Masterson
Lisa and Alex Meitzner
Marlane and Jack Morris
Pat Myers
Kathy and Patrick O'Shaughnessy
Steve Peterson
Sandi and Brad Schreck
Gwen Severt
Kathy and Jim Siebert
Gary Sobba
Geri and Rick Stinson
Mrs. G.H. Waitt, Jr.
Rocky Waitt

Andrea Myers
Jolene and Doug Kaufman

Cody Osman
Terri and Rick Osman

Trinity Pacheco
Carolyn and Tom Kitchens
Julia Lynn Lucas

Robert L. Patterson
Trish Wilson

Billy Price
Paul Taylor

Patrick J. Regan
June Regan

Tessie Rogers
Pam and Tom Rogers

Elizabeth M Rundell
Carol Rundell

David Rundle

Anonymous
 Marlene Dietz
 Farmers State Bank
 Dianne and Bob Hooper
 Ruth Hughes
 Sue and Bob Jackson
 Pam and Pat Jonas
 Coleen and Larry Larson
 Dolores Leak
 Barb and Mike Lehning
 Mary Ellen and Kelly Link
 Gale Lohrmeyer
 Toni and Roger Lohrmeyer
 Vivian and Mike Luft
 Shirley Mendoza
 Joyce Morgan
 Becki and Tom Racunas
 Jocelyn and Bruce Rundle
 Judy and Pat Rundle
 Margaret Irene and Mike Shepherd
 Dara Shumard
 Jennifer and Kevin Suminski
 Geri and Anthony Unruh

Deryl Schuster

Carston Johannsen
 Security 1st Title, LLC
 Cary Utz

Doug Schuster

Anita Schuster

Jessica Lynn Seager

Micki and Aaron Seager

Paul Skolaut

Sally Jonas

Joyce Smith

William G Headrick
 Connie and Rick Heckman
 Mary and Mike Jenkins
 Bev Jonas
 Pam and Pat Jonas
 Winifred and Dave Jones
 Janis Krohe, PhD
 Amelia Ornelas
 Brad Schreck

Patricia Stanley

Carolyn Yock

Mary Frances Stuever

Lisa and Bob Stuever
 Patty Stuever

Casey Renee Thomas

Christina Butler
 Anne and William Woods

Marilyn Thomas

Anita Schuster

Willard (Bill) Thompson

Don Sbarra

Richard G. Van Saun

Kathleen and John Baker Van Saun

Patrick Vickers

Bob Deal

R. Byrne Vickers

Don Sbarra

Tributes

Recognizing contributions made in honor of someone special.

Rachael Bradshaw

Judy and James Bradshaw

Jeremy Briggeman

Pat and Don Schwartz

Daniel Carney

Mary Birch
 Lisa Dean
 Joanne and Jim Dumler
 John Sieber

Dan & Gayla Carney

Kathi Shaw

**Wheelchair Clinic
Employees**

Christine and Blake Wells

Dane Helton

Deann Helton

Lauren Herren

Donna and Kim Mastalio

Colette Mossbarger

Erin and Josh Mossbarger

Melissa Reed

Ron Reed

Pat Terick

Regina and Alex Terick

Mike Thomas

Tamara and Bruce Bammel

Addison Wilder

Tara Saylor

Community Partners

**Atchison Area
United Way**

**United Way of
Central Kansas**

**United Way of
Dodge City**

**United Way of
El Dorado**

**United Way of
Ellis County**

**Finney County
United Way**

**United Way of the
Flint Hills**

**United Way of Franklin
County Association**

**Harvey County
United Way**

**Independence Area
Community Chest**

**United Way of
Kaw Valley**

**United Way of
McPherson County**

**United Way of
the Plains**

**United Way of
Reno County**

**Sedgwick County
Government**

**Seward County
United Way**

**United Way of
Southwest Missouri
and Southeast Kansas**

THANK YOU.



CPRF Affiliates

BTCO, Inc.

BTCO has a motivated, skilled team of people, both with and without disabilities, working side-by-side and pooling their expertise to provide solutions in digital document imaging, mailroom operations, data services, and precise-tolerance plot printing.

A model of workforce integration success in both Wichita and Topeka, BTCO has created a powerful business model that measures its success by steady growth in workforce and customer satisfaction.

Having begun with a single contract in 2001, BTCO now boasts a wide range of customers, from rural school districts to universities, from local and state governments to commercial businesses, and more.

Center Industries Corporation

Founded by CPRF in 1975, Center Industries Corporation employs approximately 200 people, with more than 75% of the direct labor hours being performed by people with disabilities.

Employees specialize in a wide range of manufacturing disciplines, including Boeing window belts, Kansas license plates, metal fabrication, CNC machining, printing, parts assembly, and more. Using assistive technology, Center Industries prides itself on its ability to modify job stations for those with limited mobility.

By creating optimal options for productivity for all employees, CIC can contract with private and public industries on the same level as a traditional manufacturing company. Complementing CPRF's mission, CIC employees are paid competitively with benefits.

