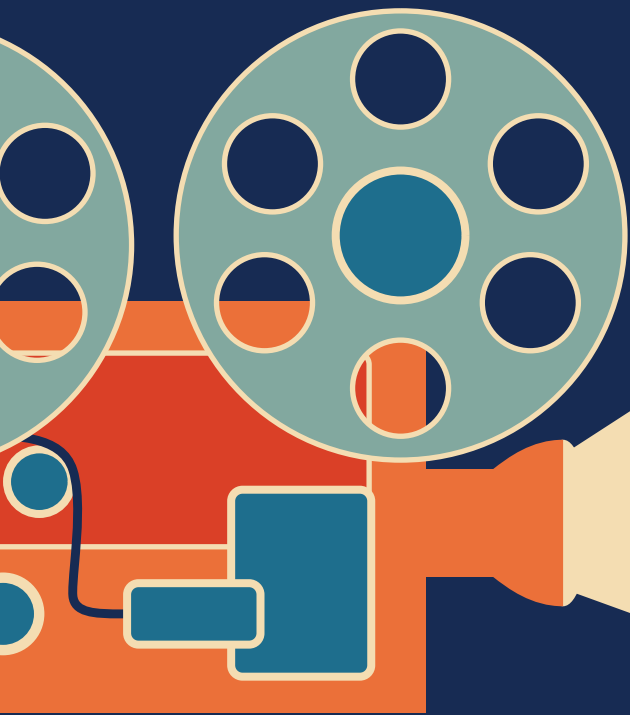
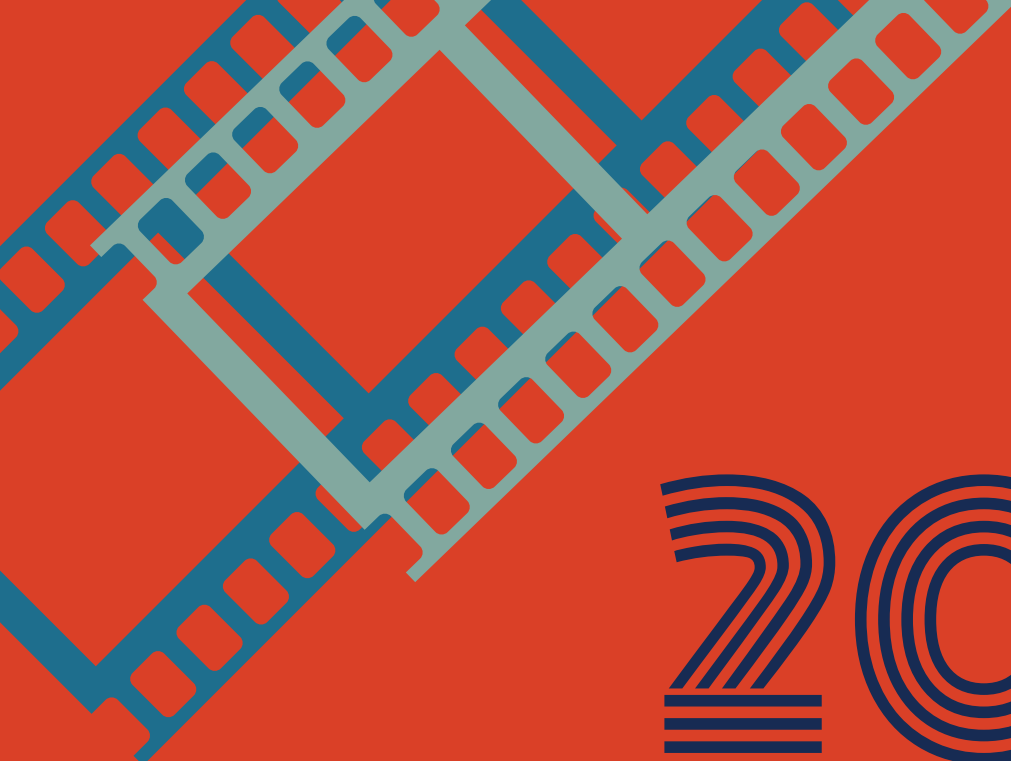


**cprf**  
est. 1972



**50**  
years

**2022 Annual Report**



**2022**

# **Annual Report**

**Cerebral Palsy Research Foundation of Kansas, Inc.**

**CPRF provides people with disabilities of all ages the customized services, support, and technology they need in order to facilitate their chosen personal and economic independence, with an emphasis on employment and training opportunities.**

# Board of Directors

## **Chairman**

**Dan F. Augustin**  
Real Base Investments

## **Vice Chairman**

**Robert P. Daniels**

## **Treasurer**

**Michael C. Burrus**

## **Secretary**

**Russell W. Meyer, III**  
CitationPartners

## **Patrick T. Jonas**

CPRF President and CEO

## **Dave Jones**

## **Timothy M. Koehler, D.O.**

Northwest Family Physicians

## **Dee Ann McIntyre**

## **Pete Meitzner**

Sedgwick County Commission

## **Linus C. Ohaebosim, D.O.**

## **Daniel J. Taylor**

Taylor Enterprises, Inc.

## **Daniel Taylor, Jr.**

Taylor Enterprises, Inc.

## **Founder**

## **John F. "Jack" Jonas, Jr.**

(1931-2014)



## The Daniel M. Carney Chairman Awards

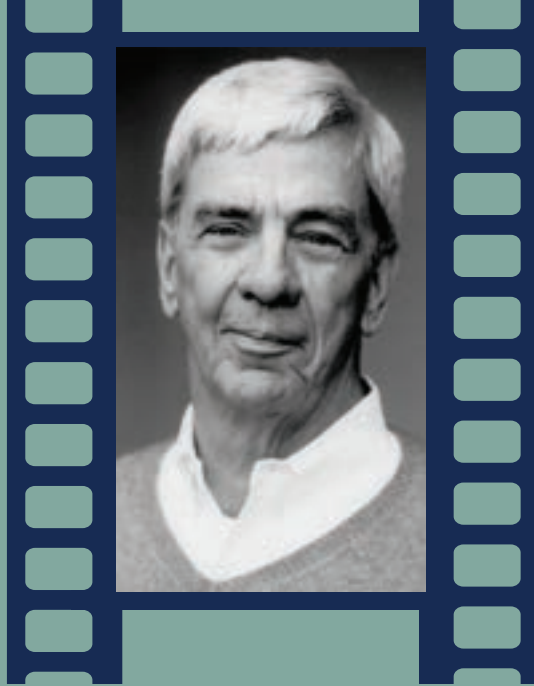
In honor of Daniel M. Carney's 50-year service as CPRF Board Chairman, The Daniel J. Taylor Family Charitable Foundation established this \$500,000 endowed gift. The Chairman Awards will provide funding of up to \$1,000 for medical equipment and assistive technology for up to 20 Kansans each year.

Many people find themselves being forced to pay out-of-pocket for the items they need. These items, such as communication devices, ramps, and wheelchair customizations, help people participate in school, gain employment, and be more independent at home. Their necessity in a healthier, happier life is undisputed, but it is also financially unattainable for most.

Through this award, we look forward to providing more resources for those we serve. Applications open April 1, 2023 at [cprf.org/chairmanawards](http://cprf.org/chairmanawards).

Learn more about CPRF's dedicated assistance program, the Equipment Fund, on page 12 of this report.

*This award is an endowed gift established in honor of Daniel M. Carney's 50-year service as CPRF Board Chairman.*



# Thank you for 50 years of leadership, Mr. Carney

As CPRF Board Chairman for five decades, Daniel M. Carney has been an invaluable part of shaping CPRF's history from the beginning. We are forever grateful for his support of our mission, and wish him the best in his retirement from the board.

**"Dan, everybody thinks you'll be remembered for pizzas. But I think you'll be remembered for helping us."**  
— Pat Kraft | CPRF Client and Center Industries Employee

## Other Retiring Board Members



**Vivian King**  
14 years of service



**Don Sbarra**  
32 years of service



**Patricia Wilson**  
23 years of service

*Thank you for your steadfast support of CPRF's mission to facilitate independence for Kansans with disabilities.*

# Notes from Leadership

Dan F. Augustin | Chairman



On behalf of CPRF's Board of Directors, staff, and most importantly those we serve, I would like to thank our many government and community funders, generous contributors, private sector partners, and volunteers who have assisted in carrying forward our mission. I also want to pay a special tribute to recent board retirees Don Sbarra, Patricia Wilson, and Vivian King, along with Mr. Dan Carney, who served as CPRF's one and only Board Chairman for 50 years. We have been supremely blessed and will greatly miss their leadership, generosity, insight, and dedication to those we serve.

As the recently elected Board of Directors Chairman, I am fully aware that I have big shoes to fill. However, I am confident we can continue the many successes of this organization. Although new to the position, I have served on the board for over 20 years and have watched it grow and flourish. I consider CPRF Founder Jack Jonas' and Board chairman Dan Carney's vision as my guide. I am proud to continue their vision to assist in providing integrated employment at a livable wage, accessible housing, and customized supports and services to individuals with disabilities.

CPRF and its affiliates, Center Industries Corporation (CIC) and Business Technology Career Opportunities (BTCO), have been instrumental in creating these opportunities for those we serve. Opportunities that then empower these recipients to become full participants in our community.

I look forward to the coming year and once again, would like to convey my gratitude to all those responsible for advancing the mission of CPRF, past and present.

Sincerely,  
Dan

# Patrick T. Jonas | President & CEO



We had a great deal to be thankful for this year. CPRF celebrated our 50th anniversary, operations are becoming normalized once again after COVID, we pursued a rebuilding of the Timbers campus, and we've created a new program called Guided Independent Living Assessment (GILA) that helps people who are interested in independent living. Our affiliates, CIC and BTCO, are also resuming employment opportunities to pre-COVID levels. Yes, I believe we have been very blessed this year.

Our successes could not be achieved without the tremendous support from our dedicated board, talented staff, generous donors, corporate partners, and volunteers. Our partnerships and collaborations with federal, state, and county governments, as well as local and statewide community funders like the Workforce Alliance and United Way organizations have also been beneficial to us, to name a few. We are truly grateful to all.

The year also brought about a changing of the guard for the CPRF board. Several spectacular members retired after many years of dedicated service: Don Sbarra, Patricia Wilson, Vivian King, and Mr. Dan Carney. I would like to extend my greatest appreciation to every member, especially to Mr. Carney – a dear friend of my father's, Jack Jonas, who founded CPRF in 1972. Mr. Carney served 50 years as Board Chairman. We will miss them all greatly.

I would like to welcome Dan Augustin, a man who has been a champion of this organization's mission and a board member for decades, as our new Board Chairman. Dan was instrumental in moving Center Industries into the modern era of manufacturing and has an acute awareness of my dad's vision.

Finally, to all of the CPRF Board Members whose dedication, generosity, and guidance have allowed the mission to grow to new heights, I would like to thank each of you.

For those who we have the privilege to serve, we look forward to a prosperous new year!!!

God Bless,  
Pat







# Mobility

# Wheelchair & Posture Seating Clinic

Our Wheelchair & Posture Seating Clinic addresses the needs of adults and children with physical disabilities, building custom chairs that suit the needs and lifestyle of each individual. Designed to enhance comfort, provide better body alignment, and minimize the risk of pressure sores, our seating systems range from manual chairs to intricate power wheelchairs. Physical and occupational therapists are on staff to work with each client to ensure that we build the best seating system possible. All of our wheelchair seating systems are built in-house by technicians with decades of specialized experience. Technicians and therapists work together to ensure each client receives the best chair for their optimal mobility, comfort, and independence. Our partnerships and support from Sedgwick County, Kansas Department of Health and Environment Services for Children with Special Health Care Needs, United Way of the Plains, regional United Way organizations, and generous donations make it possible to offer the clinic as a valuable statewide resource for clients.



**804 clients**

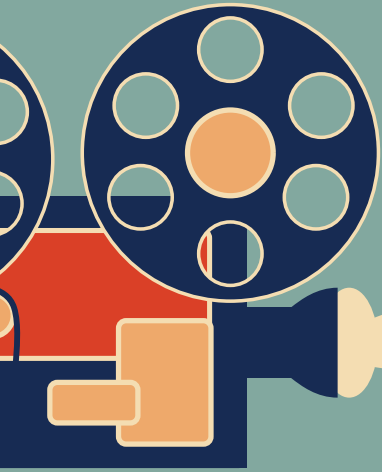
**478 received new seating systems or modifications**

**55 counties served**



# Equipment Fund

The CPRF Equipment Fund is a resource for people with disabilities throughout Kansas who need referral services, information, or financial assistance for medical devices and assistive technology. Through this program, CPRF creates funding packages for items such as power wheelchairs, van lifts, home modifications, video magnifiers, cranial molding helmets, ramps, lift chairs, and much more. Many assistive equipment devices can be costly and often present a financial hardship for individuals and families. CPRF's partnerships and support from Sedgwick County, Kansas Rehabilitation Services, United Way of the Plains, regional United Way organizations, the Christine & Dan Giroux and Zack Steven Empower Kids ICT Fund, and generous donations ensure our Kansas families receive the equipment they need.



**413 clients**

**236 devices purchased**

**62 counties served**

# Exercise & Wellness Program

The CPRF Exercise and Wellness Program promotes fitness for people with disabilities through strength training, improving flexibility, and pain-controlling exercises. Our Certified Restorative Aide works under the direction of an occupational therapist in our private gym on the Timbers campus. Our equipment includes parallel bars, standing frames, hand cycles, a para-gym, an elliptical, a cardio strider, and more. CPRF partners with United Way of the Plains and Sedgwick County to provide these services to those with disabilities in our area.

**1,425**

**individual sessions**







# Support

# Adult Day Services

Our Adult Day Services team ensures that each client's individual needs are met every day. With amenities and activities such as an accessible garden in our private courtyard, a wheelchair swing, sensory room, private swimming pool, community outings, and many other indoor learning and recreation opportunities, our clients have a variety of stimulating activities from which to choose. We are able to offer these options thanks to the help of generous volunteers and supporters such as the Sedgwick County Master Gardeners, Wichita State University School of Music, and many other community organizations. Caregivers can be confident that we provide their loved ones with excellent care.

**768**

**activities**

**256**

**on-site classes**

# Case Management

Our case managers coordinate services for over 100 individuals with disabilities each year, focusing on advocacy, service provision, locating resources, funding, and helping clients understand their rights and responsibilities.

**107**

**clients served**





# Timbers Apartments & Timber Lines Transportation

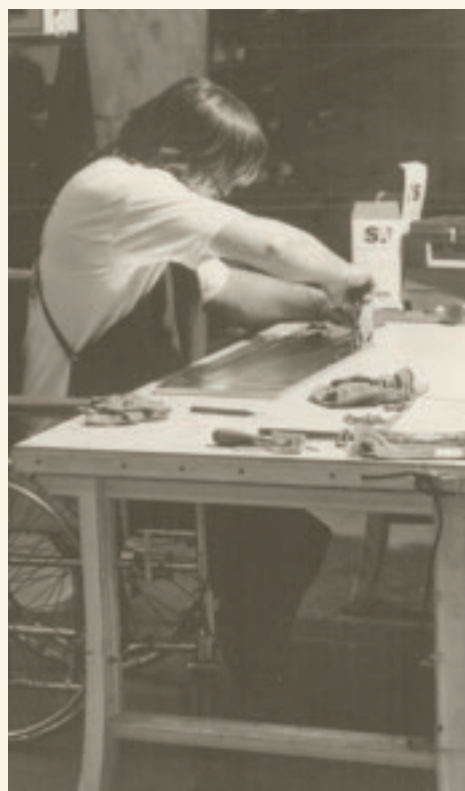
The Timbers is a 100-unit apartment community for people with physical disabilities, featuring roll-in showers, roll-under sinks and counters, accessible switches, and more. In addition to these amenities, the Timbers also has three FEMA tornado shelters throughout the campus. Our wheelchair-friendly, open concept apartments and facilities make it possible for our residents to live life how they choose. Craft and book clubs, community guest speakers, and other engaging social activities allow residents to connect. Timber Lines Transportation provides wheelchair-accessible rides to help residents and community members keep medical appointments, go to work, and more. Timber Lines Transportation is supported by United Way of the Plains and Wichita Area Metropolitan Planning Organization.

**124** residents **3,736** rides provided

## Guided Independent Living Assessment (GILA)

The GILA program assesses the readiness of young adults with disabilities to live independently, with real-life opportunities to learn and demonstrate basic living skills. Developed in conjunction with Wichita State University, this six-week program provides a plan for future success. Participants live at The Timbers, an accessible 100-unit apartment community owned by CPRF. Classroom instruction is presented on-site at CPRF, as well as off-site at the Independent Living Resource Center. For young adults with disabilities and their parents/caregivers, living independently can come with great concerns. These concerns often keep people at home after they reach adulthood and can prevent them from achieving their independence goals. This program addresses those reservations and provides valuable insight into how prepared a young adult is to live independently.







# Employment

# Job Placement

The CPRF Job Placement department guides people with various vocational barriers to the right position through employer networking, job tours, resume development, mock interviews, and application and job search assistance. Through Ticket to Work, Vocational Rehabilitation referrals, and our Youth Transition Program, we work with clients individually to ensure they find a job that suits their career goals and abilities. Work experiences are available for youth to explore job interests and for employers to evaluate candidates, ensuring the right fit. Our staff further assists in educating youth on financial literacy, leadership, employer's expectations, current labor market information, and what to expect from the jobs they seek.



**138 clients**

**45 partnered employers**

**38 work experiences**

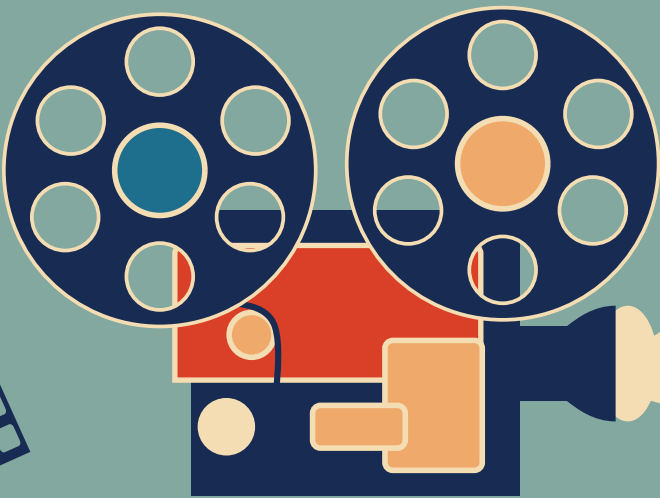
# Vocational Assessment

Our Vocational Assessment team administers tests to measure aptitudes, skill levels, abilities, interests, work values, and more. The results generate a variety of potential careers and/or training programs that would suit the client. Our one-on-one approach ensures clients receive more precise employment recommendations, which can reduce job-related dissatisfaction and turnover rates.



# School of Adaptive Computer Training (SACT)

The SACT is devoted to improving job-marketable skills for people with disabilities. In addition to our Microsoft-approved curriculum and Microsoft suite certifications, we offer courses in computing essentials, work readiness, and customer service. We offer in-person and virtual classes for high school students with disabilities to learn valuable workplace skills and earn Microsoft certifications in Word and Excel while earning school credit. In 2021, a new youth Work Readiness and Customer Service Class was launched and 13 high school students attended this new program. Since the youth program began in 2008, 482 high school students with disabilities have graduated from the program and 84% have passed at least one Microsoft Certification exam in certification classes. In 2022, the SACT also launched a new program providing Excel certification classes to military spouses. Since opening in 1999, the SACT has served over 1,700 adult students with disabilities.



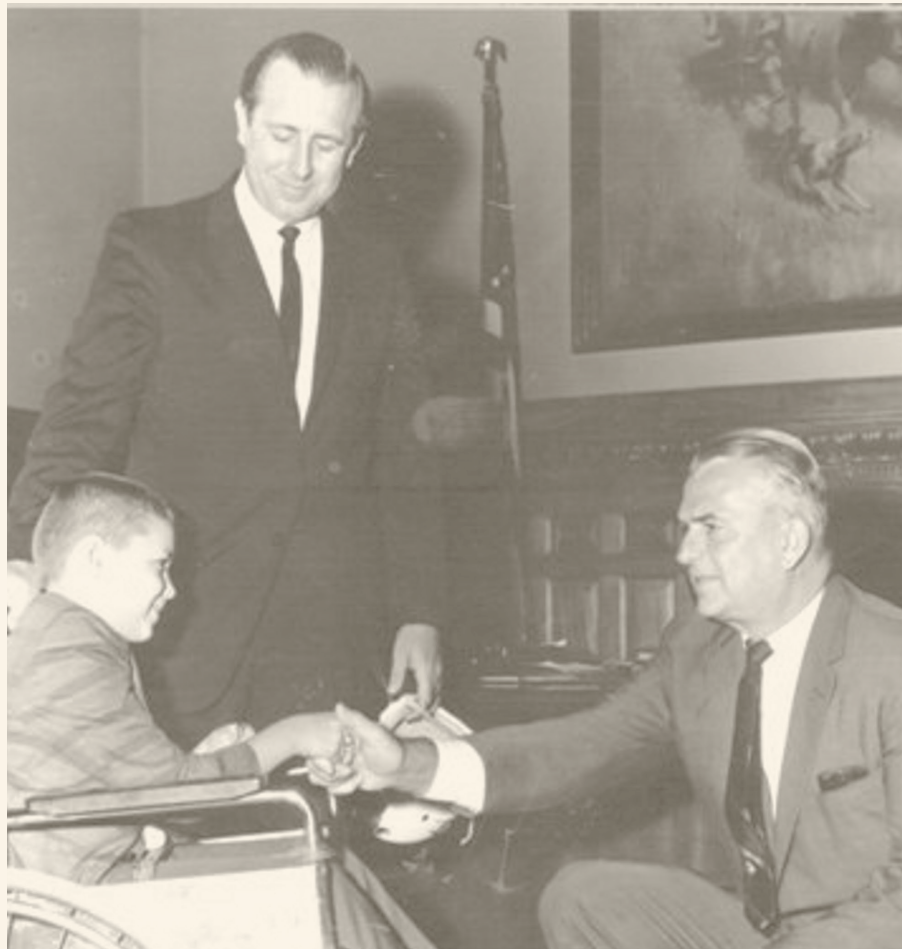
**54 students**  
**102 classes taken**

## Janitorial Services

The Janitorial Services program allows CPRF to offer more integrated employment opportunities for people with disabilities. This program provides part-time and full-time work with competitive wages and health benefits in the porter and janitorial fields. Our services include: floor cleaning, trash removal, dusting, window cleaning, porter/matron services, and other routine cleaning duties.







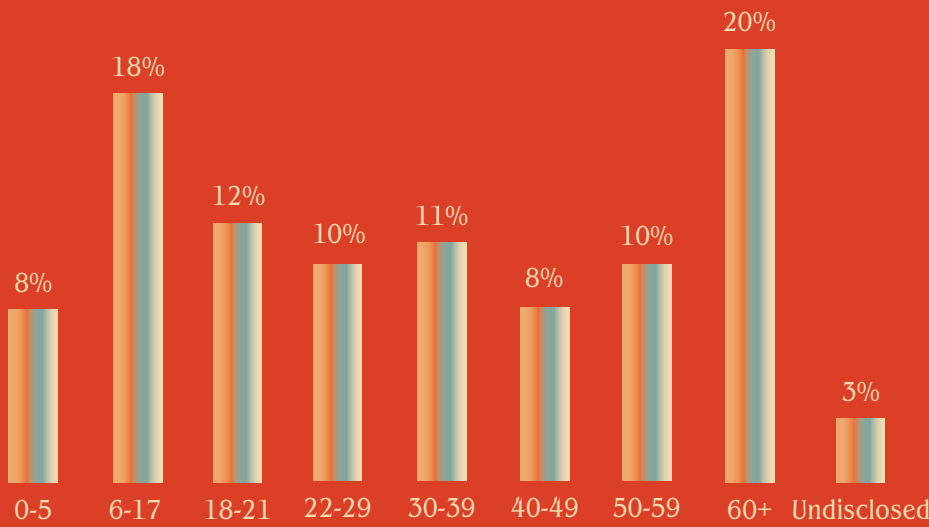
**50 years of Jack's vision,  
here's to many more.**



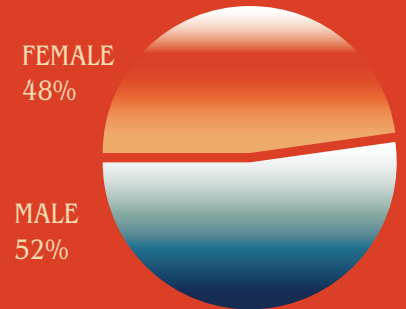
# 1 3 9 7

## Kansans Served

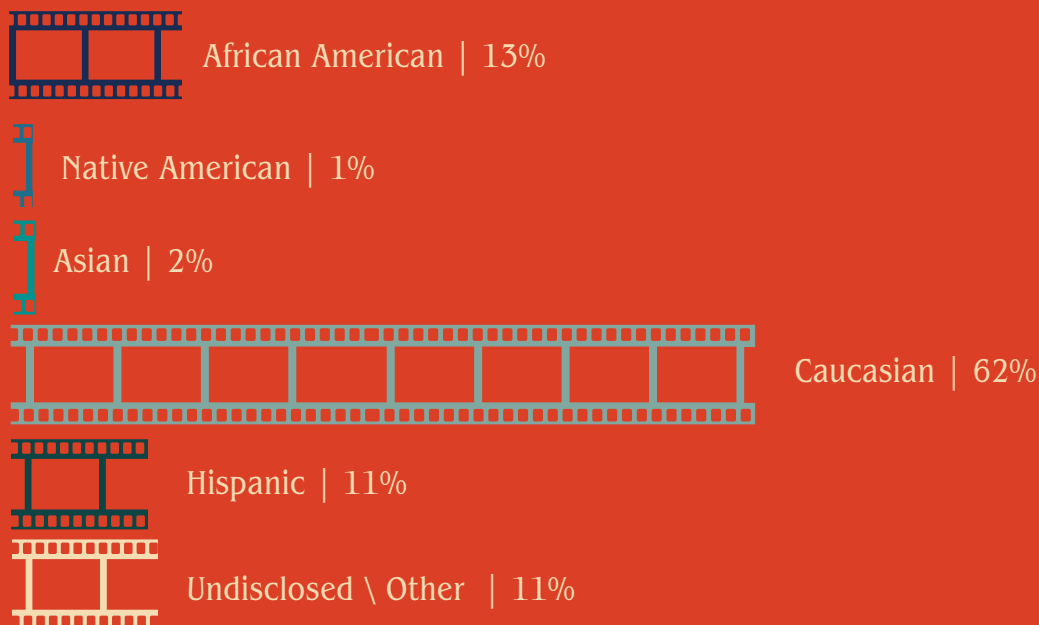
### Age



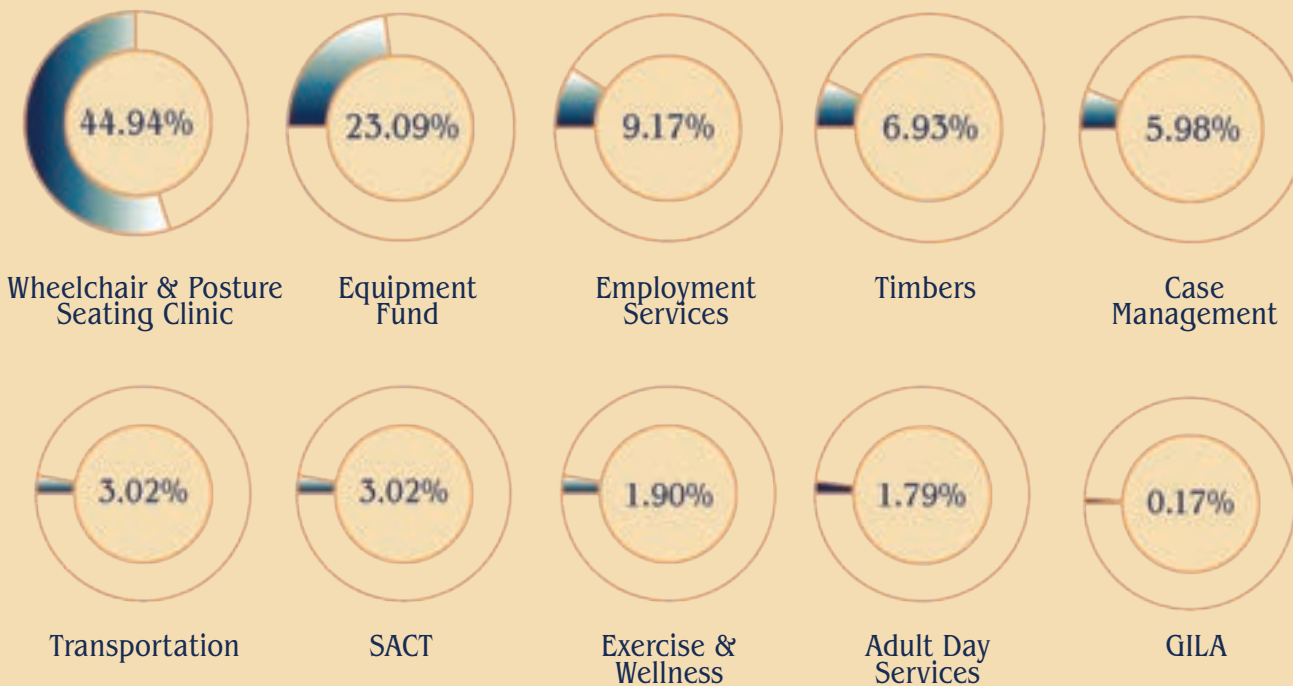
### Gender



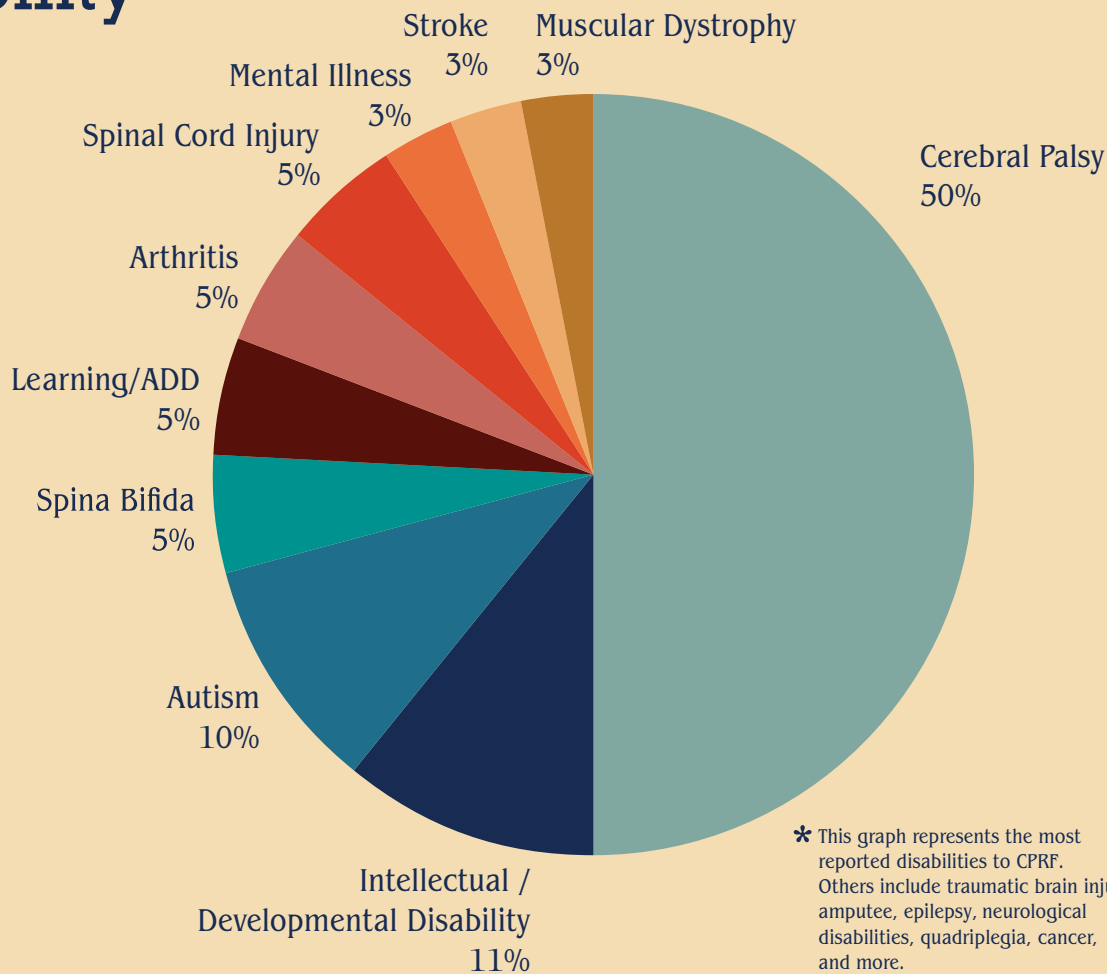
### Race & Ethnicity



# Program / Service Used



# Primary Disability\*

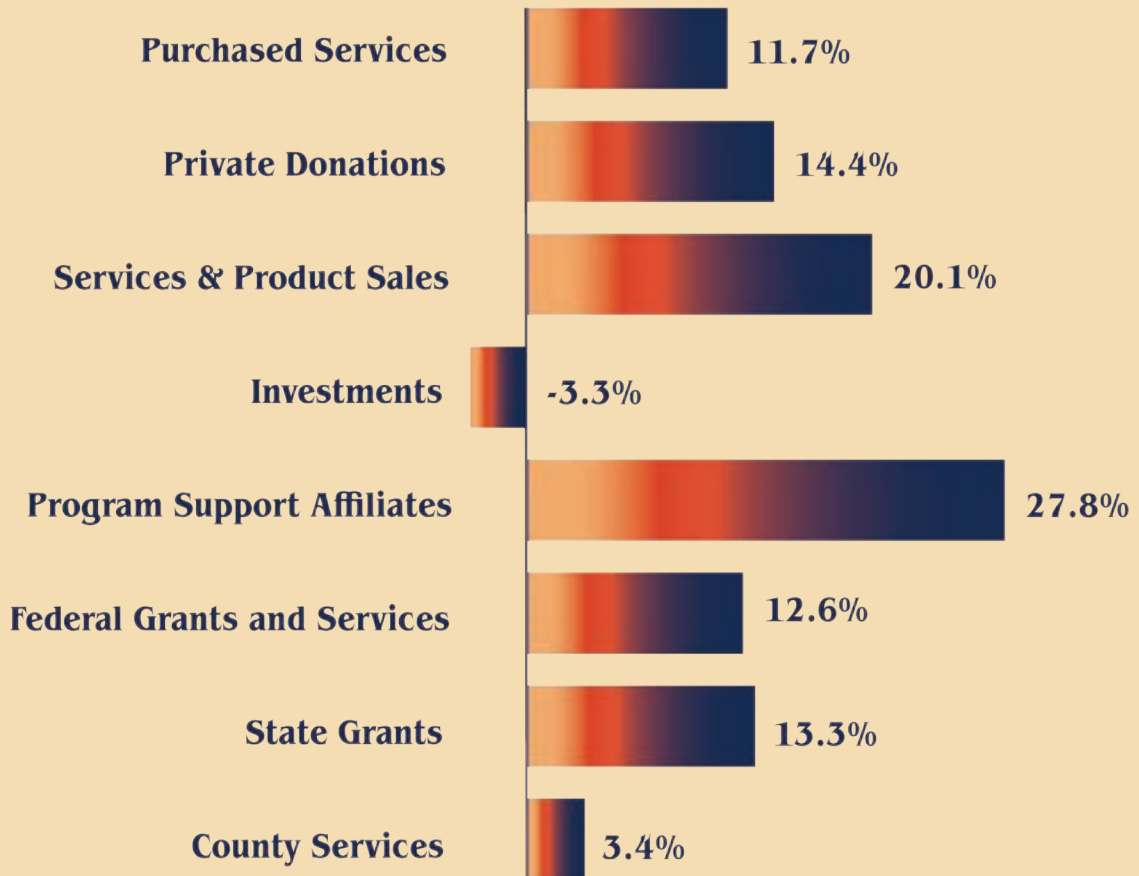
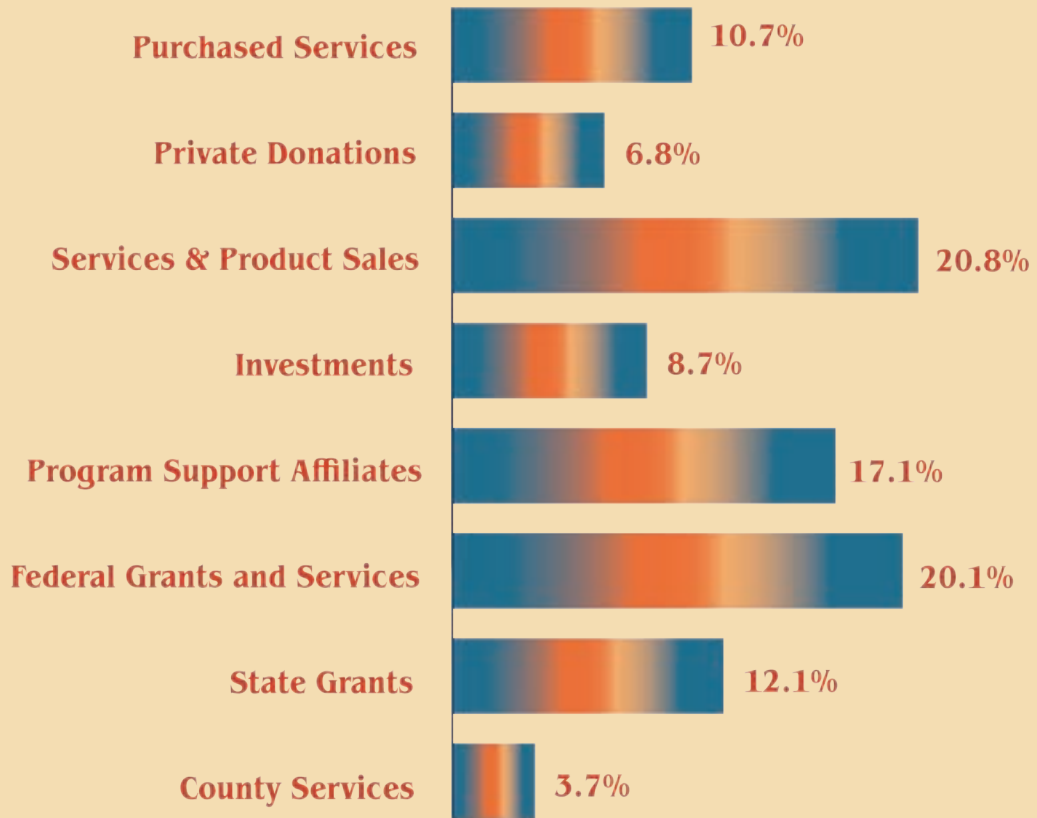


\* This graph represents the most reported disabilities to CPRF. Others include traumatic brain injury, amputee, epilepsy, neurological disabilities, quadriplegia, cancer, and more.

# Demographics

# Revenue & Support

2  
0  
2  
1  
  
2  
0  
2  
2



# Program Expenditures



# Financials

## Combined Abbreviated Statement of Financial Position

	2021	2022
Current Assets	\$ 6,881,833	\$ 6,982,926
Non-Current Assets	\$ 546,488	\$ 664,448
Net Capital Assets	\$ 8,696,440	\$ 9,208,776
Current Liabilities	\$ 562,849	\$ 714,778
Non-Current Liabilities	\$ 1,655,329	\$ 2,278,760
Combined Net Assets	\$ 13,906,583	\$ 13,862,612
<b>TOTAL ASSETS</b>	<b>\$ 16,124,761</b>	<b>\$ 16,856,150</b>
Undesignated	\$ 10,539,267	\$ 10,184,107
Board Designated	\$ 1,585,365	\$ 2,284,897
Donor Restricted	\$ 1,781,951	\$ 1,393,608

**2022**

**River City Roll:  
A Golden Gala**



*Thank you to all those who supported us at our 2022 River City Roll. The event coincided with CPRF's 50th anniversary, raising \$315,565. The biennial event was emceed by Julia Thatcher, KSN News Anchor, with 176 Keys Dueling Pianos providing fun, interactive entertainment. Guests enjoyed live and silent auctions, dinner, drinks, and dancing. This event supports statewide efforts of CPRF's Wheelchair & Posture Seating Clinic and Equipment Fund.*



# Thank you to all of our amazing sponsors!



Friesen Tool Co., Inc.



*Berry Foundation | Capitol Federal | Devlin Enterprises | Farha & Son Enterprises  
Foulston Siefkin LLP | Hall's Culligan Water*



# **2022 Jack Jonas Spirit Awards**



*Jack Jonas, CPRF Founder, dedicated his life's work to serving and advocating for an underrepresented population, creating an organization based around the principle that everyone, regardless of their physical abilities, has the right to an education, a career, and independence.*



*In honor of Jack's legacy, CPRF established the Jack Jonas Spirit Award to recognize three employees each year who have shown dedication to the CPRF mission and who truly have a heart for those we serve.*

*The award winners receive a commemorative plaque and a check for \$1,000 each.*

*CPRF, CIC, and BTCO employees are eligible for the award.*



# CPRF | Daniel Jenkins

## Shop Technician and Scheduler

Daniel has been a technician at the Seating Clinic for over 15 years. He is always bright and cheery when he comes to work. He exhibits a team-first attitude with all his fellow employees. When the Occupational Therapists and Physical Therapists are struggling with the work load or need advice on how to better serve their clients, Daniel is the first to ask "How can I help?" This is always done with a genuine smile and the desire to assist.

Where Daniel really shines is with the Wheelchair Clinic's clients. He has a loyal group of what we call "fan club members" who will ask for Daniel by name. This is because Daniel often performs the fitting check-outs with them and gets to know them personally. He goes above and beyond in explaining each component and accessory in detail with the clients, their families, and their caregivers. He is passionate about ensuring that each client understands what they are getting, why they are getting it, and how it works. This care and concern is reflected in the consistently positive feedback the Wheelchair Clinic receives from clients and their families.

Another place that Daniel shines is on the road. When a tech is required to accompany the occupational therapist to one of our two satellite seating clinics, Daniel organizes all the tools and delivery items so that the clinics can run efficiently. He is a pleasant traveling companion and is always willing to drive home after a long day of seeing clients.

In the last couple years, Daniel has also taken on the additional responsibility of helping schedule clients for their fitting and modification appointments. He brings his unique knowledge and his passion to help people while learning this often difficult task. Daniel also takes the time to work with the PR department to help identify clients for testimonials, and he and his wife volunteer for all the events that CPRF throws, including Milk and Cookies with Santa, Fall Fest, and River City Roll.

Congratulations, Daniel!



# BTCO, Inc. | Chris Ronnfeldt

## Document Specialist

Chris was nominated by his coworkers for his caring personality and willingness to always help his peers. He's been known to assist coworkers with getting on the bus at the end of a workday for their commute home. He has a strong work ethic and is committed to the success not just himself, but the entire team he works with. He is a joy to be around, has a wonderful sense of humor, and goes out of his way to make sure everyone enjoys being at work. His good energy is contagious.

Chris, Thank you for your positivity and for being such an ally to your coworkers.





# CIC | Walter L. Burd

## Supervisor



Walter's kindness comes in many forms. He's helped set up a wheelchair ramp at someone's home while they recovered from surgery and assisted another co-worker with compression wraps on evenings and weekends. If someone is without transportation, they can always catch a ride with Walter. As a supervisor he is a great teacher, and instills confidence in others. He goes out of his way to help his co-workers realize their potential.

Walter, thank you for serving as an example of compassion and leadership for your team.

**2022**

**Peter John**

**Loux Award**



*The Peter John Loux Award provides an annual recognition gift to a Kansan who demonstrates exceptional desire and dedication in overcoming their disabilities.*

*Any Kansas resident 18 years of age or older with a congenital or acquired physical or neurological disability may be nominated by another person or apply on their own behalf. Each Peter John Loux Award winner receives \$1,000 and a commemorative plaque.*

*The award is an endowed gift established by the late Richard C. "Pete" Loux in memory of his son, Peter John. Mr. Loux, a lifelong advocate for people with disabilities, used his influence as the Kansas House of Representatives Minority Leader to help launch Center Industries Corporation in 1975. He also served on the CPRF Board of Directors from 1972-2004.*

*For more information about the Peter John Loux Award, contact Debbie Hersh at [dhersh@cprf.org](mailto:dhersh@cprf.org).*

# Sondra Criddle | Oswatomie, KS

Sondra was born in 1965 and diagnosed at a very young age with adjustment disorder and a learning disability.

Sondra began receiving Tri-Ko's services in 2001. Her goal when she came into Tri-Ko's services was to live independently and work a competitive-wage community job. That same year, Sondra was hired at Paola Middle School to work part-time in the cafeteria. In 2021, she celebrated her 20th anniversary of working at the school.

According to Joshua Lankton, who nominated Sondra for this award, "she continues to be a dependable, well-rounded employee, so much so that she was asked to work an extended school year during the summer school session. She has successfully and consistently met her goal of working a competitive wage community job."

Sondra has overcome huge obstacles. She has maintained a competitive wage job and raised two children as a single mother. In 2010, she and her two children moved into a two-bedroom duplex in Oswatomie. Now that her children are adults, she currently lives independently. She is solely responsible for the daily upkeep to maintain a clean home and she does a great job, as her home always passes house inspections.

Sondra raised her two children, Destiney and Joshua, to be thoughtful, well-rounded adults and she sees her daughter almost every day. She is also a responsible pet owner of two therapy cats.

According to Heather Wier, Tri-Ko Director of Case Management, Sondra has been an inspiration in her determination toward meeting her employment goals and independence in her home.

She went on to write that what is impressive about Sondra's progress is her perseverance. She has an intellectual disability and has endured many hardships throughout her life, but she has never stopped working toward her goals of achieving personal independence.

She is still working, thriving, and living on her own with minimal support needed.

Sondra remains enthusiastic about someday achieving her goal of purchasing a home of her own.



“Sondra’s lifetime record of achieving independence is extraordinary.”

— Heather | *Tri-Ko Director of Case Management*

# Honor Roll of Donors

Thank you to all of our generous donors. Your support allows us to continue our mission and diverse programming, serving Kansans with disabilities throughout the state.

*This list reflects contributions made from July 1, 2021- June 30, 2022*

## John F. Jonas Award

*Recognizing donors who contributed \$200,000 in a lifetime, or \$1 million through a deferred gift.*

Anonymous	INTRUST Bank	*Helen and Russell Meyer, Jr.
Bank of America	+Evalyn B. Joachim	Lynn and +Robert Moore
Rita and Gene Bicknell	William T. Kemper Foundation-	Patricia Wilson and +Bob Patterson
The Boeing Company	Commerce Bank, Trustee and	+Carl Rohwer
City of Wichita-HOME	Commerce Bancshares	Susan and +Les Rudd
Investment Partnership	Foundation	Sandlian Realty
Program Grant	The Kresge Foundation	Donald D. Sbarra
*Robert Daniels	Lattner Family Foundation Inc.	+Pat and +Bob Schmidt
Myra and Tom Devlin	Dwane L. and Velma Lunt Wallace	Sandi and Brad Schreck
EDS Foundation	Charitable Foundation	Sally and +Bill Simon
EDS Corporation	The J. E. & L. E. Mabee	Kate and Dan Taylor
Federal Home Loan	Foundation	Kenneth J. Wagnon Foundation
Bank of Topeka	McIntyre Foundation	Alice and Dale E. Wiggins

## Chairman's Award

*Recognizing donors who contributed \$100,000 in a lifetime, or \$500,000 through a deferred gift.*

Larry and +Sally Arbuckle	Maura and Bob Geist	Raytheon Aircraft Company
Cessna Foundation	Dane G. Hansen Foundation	Diane and +Darrel Rolph
EOG Resources, Inc.	Microsoft Corp.	Mary Ann Skolaut
Fred C. and Mary R. Koch	Mary Lynn and William L. Oliver	
Foundation		

## Founder's Award

*Recognizing donors who made an outright gift of \$10,000 or more, \$50,000 in lifetime, or \$250,000 through a deferred gift.*

+Virginia and +George Ablah	Candlewood Hotel	Barry L. and Paula M. Downing
Anadarko Petroleum Corporation	Michael D. Carney	Foundation
Anonymous	Cessna Aircraft Company	Employees Community Fund of
Bailey Lauerman	Champions for Charity	Boeing Wichita
*Michelle Becker	Steve Clark	Emprise Bank
Beech Charitable Gift Fund	Davis-Moore Auto Group	eoVision
*Becca Bohl Trust	DCSS Ability, LLC	Nellie F. Estes Testamentary Trust
Bombardier Learjet Care Fund	DeVore Foundation	Gladys M. Evans Testamentary
Sherry and +Bernie Butler	Digital Consulting & Software	Trust
Bernie Butler Family Foundation	Services, Inc.	EVCON Industries Inc.

Fahnestock Plumbing, HVAC & Electric  
\*Kathy Feist Family Endowment  
Fran Jabara Family Foundation, Inc.  
Goodwill Industries of Kansas, Inc.  
Gossen Livingston Associates, Inc.  
Grand Chapter of Kansas Order of the Eastern Star  
Libba and Wink Hartman  
Veryle Heriford Estate  
The Roy and Myrna Jo Herren Giving Fund, A Donor Advised Fund with The Signatry  
+Dan Hesse  
Sherri and +Larry Hiebert  
Edna Hightower Estate  
Beverly and +John F. Jonas  
+Lilan Kane  
Kansas Health Foundation  
Key Construction, Inc.

John S. & James L. Knight Foundation  
Koch Industries, Inc.  
Joanie and Tim Koehler  
Rex C. & Marie Elizabeth Larabee Trust  
Rose Lichtenstein Estate  
+Richard C. "Pete" Loux  
Dee Ann McIntyre  
Multimedia Cablevision  
Multimedia Foundation  
The Victor Murdock Foundation  
\*Martha and Robert Neidhart I.A. O'Shaughnessy Foundation  
+Mary Jean and +Larry Payne  
POET Biofuels  
Profit Builders  
June and +Patrick Regan  
The Darrell and Dee Rolph Family Fund, a Donor Advised Fund of The Signatry

Salesforce.com, Inc.  
SBC Foundation  
Robert E. and Patricia A. Schmidt Foundation  
Anita and +Deryl Schuster  
\*Tom and Donna Shirley D/A Endowment  
Signal Theory  
\*Jake Simon Trust  
\*Stephanie Simon Trust  
Standard Beverage  
The Sunderland Foundation  
United Methodist Health Ministry Fund  
Kate and Bill Walsh, Jr.  
Westar Energy Foundation  
\*Wichita Community Foundation  
Wichita Greyhound Charities, Inc.  
K. T. Wiedemann Foundation  
Winter Enterprises

## Heritage Award

*Recognizing donors who made an outright gift of \$5,000 or more, \$25,000 in lifetime, or \$100,000 through a deferred gift.*

\*Adams Brown  
Gladys and Buck Alley  
American National Bank  
Dot and Dan Augustin  
The Barton Foundation  
Debbie and Arlin Beer  
Bicknell Family Foundation Fund  
Brockmeyer, Inc.  
BTCO, Inc.  
\*Anne Buford  
Burnham Products  
Kathy and Mike Burrus  
Yolanda and Gene Camarena  
Cindy and Matt Carney  
Janie and +Frank Carney  
Arlo and Bob Casper  
Center Industries Corporation  
\*CMH Living Trust  
\*Commerce Bank, N.A.  
\*Community Foundation of Southwest Kansas  
Creative Ventures & Capital, Inc.  
Lois and +Jim Daniels

Drs. Karla and Brian Demby  
Karissa and Mark Dugan  
David Egan  
The Fidelity Bank Foundation  
First Baptist Church  
Janis Friesen  
Galichia Foundation  
Gannette Foundation  
Craig Haines  
\*Tom & Roberta Harkness Endowment  
Nancy and +Richard Hassur  
Hawker Beechcraft Corporation  
R.D. and Joan Dale Hubbard Foundation  
+Lois Huebert  
IMA, Inc.  
Inter-First Company LLC  
Nita and Joey Jackson  
Pam and Pat Jonas  
Diana and Richard Kasper  
+Sandy and +Ben Kasper  
Kathy and Herb Krumsick  
The Carl V. and Honore G. Maloney Foundation

Nancy and Hal McCoy  
Midwest Corporate Aviation  
Murfin Inc.  
+Norma R. Murphy  
Kathleen and Patrick O'Shaughnessy  
Prudential Securities  
\*Sharol and Robert Rasberry  
Laura and +Jack Richmond  
Gwen and +J.B. Severt  
Sharla and Aaron Severt  
Pat and Jack Shelton  
\*Shultz Law Office PA  
John Sieber  
Connie and Roger A. Sink  
+Clifford Stone  
Regina and Alex Terick  
THORN Americas  
Universal Lubricants  
Polly and +Patrick Vickers  
Vornado Air LLC  
\*Wichita Gladiator Association

## Friends of CPRF

*Recognizing donors who supported CPRF with a gift from July 1, 2021 to June 30, 2022.*

Jan and Jerry Aaron	Chicken N Pickle	First Place
Acornacopia	Kayson Chong	Tyler Fix
Kim and Keith Adams	Christopher Clark Photography, Inc.	Flint Hills National Golf Club
Trenita Adamson	CitationPartners LLC	Robin and Byron Folkerts
All Star Sports	Clark Investment Group	Mike Forristal
Janis and Mike Alstatt	Deborah and Jerome Clasen	Michael Foster
Amber Waves Diving Co.	Anne Coffin	Bengie and Jack Foster
American Warrior	Brandon Coleman	Tammy and Jim Foulston
Gretchen and Stan Andeel	Coleman Materials, LLC	Foulston Siefkin LLP
Ron Andra	Kay and Cory Conklin	Deb and Bill Frailey
Anonymous	Colette and Kent Conner	Francesca's
Karen Asmann	Hilda and Chris Conrade	Friesen Tool Co., Inc.
Atlas Spring & Axle	Paula and Monte Cook	Frou Frou
Marcia and Ted Ayres	Susan K. Cook	Ardis and Dr. Luther Fry
Brooke and Timothy Aziere, Jr.	Cosmosphere	Marilyn Frydendall
Paul Babich	Kelley and David Cox	Rebecca and Rick Gates
Karen & Tom Balbierz	Richard Cree	Amy and Scott Gepner
Tamara and Bruce Bammel	Tammi Crook	Amy and Craig Gjerde
Lora and Don Barry	CrossFirst Bank	Edward Goldberg
Judy and John Beal	Dena and Mike Dassel	Daniela Gonzalez
Beau Monde Spa and Boutique	Ann and Dr. Terry Davidson	Molly and Roarke Gordon
Adam Becker	Scott Davies	O.S. and Jaclyn Gossard Fund
Berry Foundation	Nikki and Bob Deal	Gould Law Offices Chtd, LLC
Ashika Bhakta	Lisa Dean	Mark Grasse
Mary Birch	Deano's Grill and Tapworks	Great Harvest Bread Co.
Sharon Bishop	Margaret and Todd Dechant	Greater Salina Community
Tony Bose	- 6 Meridian	Foundation
Botanica, The Wichita Gardens	Donavon Decker	Greater Wichita YMCA
Jeremy Bowman	Marlene Dietz	Darcie and Bryan Green
Orleane Bowman	Suzanne Dirks	Sylvia and Larry Green
Judy and James Bradshaw	Discover WSU	Debbie and Joe Grisolano
Trish Brasted	Doc's Friends, Inc.	Vickie Guillot
Nancy and Bob Briggeman	Dean Dreher	Greg Gurley
Bari Bright	Mark Drummond	Victoria and Benjamin Guter
Marla Brockmeyer	Grace Dugan	Judith and Stanley Guyer
Jordan Brungardt	Joanne and Jim Dumler	Jane and Dr. Robert Hagan
Madison Budreau	Sandra Dunlavy	Barbara and John Hagood
Bullseye Shooting Range	Margaret and Randy Ellenz	Hall's Culligan Water
Donna Bunk	Maria and Bill Engelhardt	Arlen Hamilton
William G. Burmeier	Sharon and Bruce Engelland	Nancy and Edward Hampel
Burns & McDonnell	Carrie and Marcus Engels	Deborah and Stuart Hanson
Kenneth Bush	Stephen English	Jane and Randy Harder
Christina Butler	Kathleen Evans	Thelma Faye Harms Trust
Dr. Dan Caliendo	Every	Marjorie Hartman
Sally and Greg Cannata	Exploration Place	Marilyn and Gary Hay
Capitol Federal Foundation	Cheri Fahrback	Patty and Pat Hayes
Karen Carney	Jennifer Farha	William Headrick
Timi Caro	Farha and Son Enterprises	Helen and Edward Healy
Beverly A. Cash	Farmers State Bank	Jennifer and Chris Hearne
George Catt	Kathy Feist Family Endowment	Connie and Rick Heckman



Deann Helton  
Jordan Henderson  
Helen Henry  
Valerie and Joe Hepburn  
Paige and Chris Hermann  
Antonio Hernandez-Reynoso  
David Herrmann  
Debbie Hersh  
Becky and Kurt Hesse  
Gary Hewson  
Sherri Hiebert  
Mim and Kieth Hiesterman  
Deanna and Larry Hillyard  
Sherlene Hook  
Dianne and Bob Hooper  
Susan and Rick Hoppe  
Ruth Hughes  
Elizabeth Hyder  
Rosanne Hylton  
The Insurance Guys  
Charlotte Iseman  
Norah Iseman  
Bobbie and Alan Jaax  
David Jabara  
Sue and Bob Jackson  
Jaco General Contractor Inc.  
Douglas Jacobs  
Louis J. Jacobs  
Jake Simon Trust  
Mary and Mike Jenkins  
Jenny Dawn Cellars LLC  
Jimmie's Diner  
Mary and Eric Johansen  
John A. Ackeret Estate  
John Jonas Custom Knives  
Michelle Johnson  
Johnson's Garden Center  
Sally Jonas  
Julie and Paul Jonas  
Peter Jonas  
Ashley and Frank Jonas  
Emily Jones  
Renee and Vince Jones  
Winifred and Dave Jones  
Anita Jones  
Larry Jones  
Jolene and Doug Kaufman  
Tricia and David Kaufman  
Carolyn Kearney  
Carl Keith  
Caroline Kelley  
Diane and David Kemp  
Jeanette and Leland Kemp

Kendra Scott  
Glenn Kerbs  
Cheryl and Pat Kerivan  
Hannah and Rich Kerschen  
Lori and Craig Kilian  
Vivian and Nick King  
Carolyn and Tom Kitchens  
Downtown Kiwanis Foundation  
KMUW  
Jane and Bob Knight  
Jennifer Knight  
Darlene and Ric Knorr  
Mary Frances Koehler  
Judy and Tony Kostusik  
Janis Krohe, PhD  
Christine Kubik Living Trust  
Shawna and Shawn Lancelot  
James Larsen  
Coleen and Larry Larson  
Barbara Latta  
LDF Sales & Distributing  
Dolores Leak  
Maryanne Leap  
Barb and Mike Lehning  
Linda and Greg Leighton  
Julie and Doug Lies  
Mary Ellen and Kelly Link  
MeleLani Llanes  
Vanessa and Chuck Lohf  
Gale Lohrmeyer  
Toni and Roger Lohrmeyer  
Lonetta Lollar  
Joann Louis  
Merna Loux Kermott  
Julia Lynn Lucas  
Vivian and Mike Luft  
Brandon Mabry  
Julie and Buell MacArthur  
Rosemary and Donald J. Malone  
Jeanine and Mike Maloney  
Diane Mann  
Joan E Marcotte  
Mark Arts  
Dee Marsh  
Michael Martinez  
Deborah and David Mason  
Rachel Massa  
Donna and Kim Mastalio  
Norma Jean Masterson  
Georgia and Danny Maxwell  
Yonnie and Mark McAfee  
Luann McCullough  
McDonald's - Razorback, Inc.

Joann and Ron McDowell  
Dwight McGehee  
Donna and Don McGinness  
Janet and Phyll McGonigle  
Cher and Sean McLachlan  
Tamara and Greg Meisel  
Suzi and Peter Meitzner  
Lisa and Alex Meitzner  
Shirley Mendoza  
Mennonite Friendship Communities  
Inc.  
Ruth A. Meyer  
Janet and Russell W. Meyer III  
Tona and Dr. Michael Schekall  
Leisa and Rocky Milford  
Michelle Miller  
Dawn and Brad Minear  
Mission Thrift Shop  
LeeAnn Moats  
Joyce Morgan  
Marlane and Jack Morris  
Krista Morrissey  
Mosley Street Melodrama  
Erin and Josh Mossbarger  
Museum of World Treasures  
Pat Myers  
Kay and Charles Myers  
National Seating & Mobility  
Nancy and Mike Oldfather  
Joan and Kalin Omo  
Amelia Ornelas  
Mark Orvis  
Kathy and Patrick O'Shaughnessy  
Terri & Rick Osman  
Grant Paitz  
Lisa and John Pennella  
Steve Peterson  
Nancy and William Porter  
Jill and Duane Poynter  
Kianne and Shane Prill  
+Robert Pugh  
Becki and Tom Racunas  
Lynda Rathbone  
Colleen and John Reals  
ReeceNichols  
Ron Reed  
Gail and Steve Reinemund  
Family Foundation  
Cari Reiss  
Cathy and Delbert Resser  
Pam and Tom Rogers  
Barbara and David Rolph  
Steve Rose

Roxy's Downtown  
Rudd Oakville Estate  
Carol Rundell  
Pat and Judy Rundle  
Jocelyn and Bruce Rundle  
Ruth Ryan and Brittany  
Saint, Inc.  
Salem Community Church  
Sam's Club  
Tara Saylor  
Andrew Scheck  
Mary and Andy Schlapp  
Robert Schmidt  
Schreck Financial Group  
Donald Schultz  
Pat and Don Schwartz  
Peggy and John Schwendeman  
Gayla and Kevin Schwertfeger  
Micki and Aaron Seager  
Security 1st Title, LLC  
Sedgwick County Zoo  
Kathy and Dr. Eric Sexton  
Gretchen Sharp  
Kathi Shaw  
Margaret and Mike Shepherd  
Colby and Tobi Sheridan  
Jamee and Jeremy Sholtz  
Nancy and Mike Shonka  
Dara Shumard  
John Sieber  
Kathy and Jim Siebert  
Diane and Kelly Siefkes

Sierra Hills Golf Club  
Silver Dollar  
Capper Foundation  
Skyward Credit Union  
Stacy and Scott Smith  
Helen Smith  
Gary Sobba  
Spangles  
Standard Beverage  
Patrick Stang  
Anika Stewart  
Rich Stinnett and Charles Robinson  
Geri and Rick Stinson  
Marni and David Stone  
Strataca  
Whitney and Jamie Stratton  
Rita and Randy Stucky  
Patty Stuever  
Lisa and Bob Stuever  
Jennifer and Kevin Suminski  
Jordan Swan  
Samantha and Roby Swan  
Tallgrass Film Association  
Monica and Steven Taylor  
Paul Taylor  
Susan and Dan Taylor Jr.  
Judy and Pat Terick  
Textron Aviation Inc.  
The Docking Group, RW Baird  
The LBD, Etc.  
The Spice Merchant and Company  
Polly and Brooks Thompson

Barbara Thompson  
Dyan and Dave Thornton  
Christie and Tom Triplett  
Molly and James Tully  
Anna and Dr. Paul Uhlig  
Geri and Anthony Unruh  
Cary Utz  
Valley Offset Logistics  
Kathleen and John Baker  
Van Saun  
Mrs. G.H. Waitt, Jr.  
Rocky Waitt  
Walmart  
Gwen Ward  
Candace and Martin Ward  
Sue and Kurt Watson  
Christine and Blake Wells  
Lisa and Bob Whiteman  
Wichita Fire Department  
Wichita Thunder  
Kevin Wilmoth  
Winfield Kiwanis  
Anne and William F. Woods  
WSU Alumni Association  
Kelly Wynn  
Che Keung Yim  
Yingling Aviation  
Carolyn Yock  
Crystal and Chad Young  
Paula and Eric Zoller

## Memorials

*Recognizing contributions made in memory of a loved one.*

### **John Ackeret**

Estate of John A. Ackeret  
- Marisa Ackeret

### **Linda Algrim, in honor of Tinley**

Mike and Janis Alstatt  
Deboarh and Jerome Clasen  
Sharon and Bruce Engelland  
Cheri Fahrback  
Barbara and John Hagood  
Julie and Buell MacArthur  
Georgia and Danny Maxwell  
Janet and Phyll McGonigle  
Cher and Sean McLachlan  
Mennonite Friendship  
Communities Inc.

Salem Community Church-Salem  
W.W.T.  
Donald Schultz  
Gayla and Kevin Schwertfeger  
Diane and Kelly Siefkes  
Silver Dollar  
Stacy and Scott Smith

### **Don and Joy Bergkamp**

Michelle Becker

### **John Patrick Bowman**

Orleane Bowman

### **Luke Brandon**

Brandon Mabry

### **Jeff Brockmeyer**

Trenita Adamson  
Ruth Meyer  
Leisa and Rocky Milford  
Monica and Steven Taylor

### **Joe Bunk**

Donna Bunk

### **Richard Cole**

Marcia and Ted Ayres

### **Jack DeBoer**

Anonymous

### **Sara Eckhart**

Sandra Dunlavy

**Wilbur Elsea**  
Stephen English

**Christopher Paul Foster**  
Maria and Bill Engelhardt  
Bengie and Jack Foster  
Mary and Eric Johansen  
Linda and Greg Leighton  
Dee Marsh  
Lynda Rathbone  
Jordan Swan  
Gwen Ward  
Candace and Martin Ward

**Jesica Gainer**  
Merna Loux Kermott

**Esther Green**  
Sylvia and Larry Green

**Barry Harris**  
Helen Smith

**Larry Elliott Hiebert**  
Sherri Hiebert

**Joe Higgins**  
Kay and Charles Myers

**Matthew Jacobs**  
Louis Jacobs

**Melissa Whitmore Johnson**  
Atlas Spring & Axle

**Eileen and Jack Jonas**  
Pam and Pat Jonas

**Jack Jonas**  
Victoria and Benjamin Guter  
Barbara Latta  
Donna and Don McGinness  
Mary Ann Skolaut

**Jerry Jonas**  
Victoria and Benjamin Guter  
Sally Jonas  
Barbara Latta  
Jill and Duane Poynter  
Mary Ann Skolaut

**Joseph Jonas**  
Marla Brockmeyer  
Jane and Dr. Robert Hagan  
Mim and Kieth Hiesterman  
Mary Frances Koehler  
Joanie and Dr. Tim Koehler  
Nancy and Mike Oldfather  
Nancy and William Porter  
June Regan  
Judy and Pat Terick  
Polly and Brooks Thompson

**Sanderina and Benjamin Kasper**  
Diana and Rick Kasper

**Dottie Kasper**  
Pam and Tom Rogers

**William Keltner**  
Barbara Latta

**James (Jim) W. Latta**  
Victoria and Benjamin Guter  
Barbara Latta

**Nettie Llanes**  
MeleLani Llanes

**Jacob Lohf**  
Vanessa and Chuck Lohf II

**Austin Lollar**  
Lonetta Lollar

**Peter John Loux**  
Merna Loux Kermott

**Richard Loux**  
Merna Loux Kermott

**Bill Mansfield**  
Barbara Latta

**June Eileen McGrath**  
Jan and Jerry Aaron  
Karen Asmann  
Judy and John Beal  
Commerce Bank, N.A.  
Paula and Monte Cook  
Susan Cook  
Marjorie Hartman  
Elizabeth Hyder

Rosanne Hylton  
Anita Jones  
Emily Jones  
Christine Kubik  
Maryanne Leap  
Joann Louis  
Jeanine and Mike Maloney  
Joan Marcotte  
Deborah and David Mason  
Norma Jean Masterson  
Lisa and Alex Meitzner  
Marlane and Jack Morris  
Pat Myers  
Kathy and Patrick O'Shaughnessy  
Steve Peterson  
Sandi and Brad Schreck  
Gwen Severt  
Kathy and Jim Siebert  
Gary Sobba  
Geri and Rick Stinson  
Mrs. G.H. Waitt, Jr.  
Rocky Waitt

**Andrea Myers**  
Jolene and Doug Kaufman

**Cody Osman**  
Terri and Rick Osman

**Trinity Pacheco**  
Carolyn and Tom Kitchens  
Julia Lynn Lucas

**Robert L. Patterson**  
Trish Wilson

**Billy Price**  
Paul Taylor

**Patrick J. Regan**  
June Regan

**Tessie Rogers**  
Pam and Tom Rogers

**Elizabeth M Rundell**  
Carol Rundell

**David Rundle**

Anonymous  
 Marlene Dietz  
 Farmers State Bank  
 Dianne and Bob Hooper  
 Ruth Hughes  
 Sue and Bob Jackson  
 Pam and Pat Jonas  
 Coleen and Larry Larson  
 Dolores Leak  
 Barb and Mike Lehning  
 Mary Ellen and Kelly Link  
 Gale Lohrmeyer  
 Toni and Roger Lohrmeyer  
 Vivian and Mike Luft  
 Shirley Mendoza  
 Joyce Morgan  
 Becki and Tom Racunas  
 Jocelyn and Bruce Rundle  
 Judy and Pat Rundle  
 Margaret Irene and Mike Shepherd  
 Dara Shumard  
 Jennifer and Kevin Suminski  
 Geri and Anthony Unruh

**Deryl Schuster**

Carston Johannsen  
 Security 1st Title, LLC  
 Cary Utz

**Doug Schuster**

Anita Schuster

**Jessica Lynn Seager**

Micki and Aaron Seager

**Paul Skolaut**

Sally Jonas

**Joyce Smith**

William G Headrick  
 Connie and Rick Heckman  
 Mary and Mike Jenkins  
 Bev Jonas  
 Pam and Pat Jonas  
 Winifred and Dave Jones  
 Janis Krohe, PhD  
 Amelia Ornelas  
 Brad Schreck

**Patricia Stanley**

Carolyn Yock

**Mary Frances Stuever**

Lisa and Bob Stuever  
 Patty Stuever

**Casey Renee Thomas**

Christina Butler  
 Anne and William Woods

**Marilyn Thomas**

Anita Schuster

**Willard (Bill) Thompson**

Don Sbarra

**Richard G. Van Saun**

Kathleen and John Baker Van Saun

**Patrick Vickers**

Bob Deal

**R. Byrne Vickers**

Don Sbarra

**Tributes**

*Recognizing contributions made in honor of someone special.*

**Rachael Bradshaw**

Judy and James Bradshaw

**Jeremy Briggeman**

Pat and Don Schwartz

**Daniel Carney**

Mary Birch  
 Lisa Dean  
 Joanne and Jim Dumler  
 John Sieber

**Dan & Gayla Carney**

Kathi Shaw

**Wheelchair Clinic  
Employees**

Christine and Blake Wells

**Dane Helton**

Deann Helton

**Lauren Herren**

Donna and Kim Mastalio

**Colette Mossbarger**

Erin and Josh Mossbarger

**Melissa Reed**

Ron Reed

**Pat Terick**

Regina and Alex Terick

**Mike Thomas**

Tamara and Bruce Bammel

**Addison Wilder**

Tara Saylor

## Community Partners

---

**Atchison Area  
United Way**

**United Way of  
Central Kansas**

**United Way of  
Dodge City**

**United Way of  
El Dorado**

**United Way of  
Ellis County**

**Finney County  
United Way**

**United Way of the  
Flint Hills**

**United Way of Franklin  
County Association**

**Harvey County  
United Way**

**Independence Area  
Community Chest**

**United Way of  
Kaw Valley**

**United Way of  
McPherson County**

**United Way of  
the Plains**

**United Way of  
Reno County**

**Sedgwick County  
Government**

**Seward County  
United Way**

**United Way of  
Southwest Missouri  
and Southeast Kansas**

**THANK YOU.**



# CPRF Affiliates

## BTCO, Inc.

BTCO has a motivated, skilled team of people, both with and without disabilities, working side-by-side and pooling their expertise to provide solutions in digital document imaging, mailroom operations, data services, and precise-tolerance plot printing.

A model of workforce integration success in both Wichita and Topeka, BTCO has created a powerful business model that measures its success by steady growth in workforce and customer satisfaction.

Having begun with a single contract in 2001, BTCO now boasts a wide range of customers, from rural school districts to universities, from local and state governments to commercial businesses, and more.

## Center Industries Corporation

Founded by CPRF in 1975, Center Industries Corporation employs approximately 200 people, with more than 75% of the direct labor hours being performed by people with disabilities.

Employees specialize in a wide range of manufacturing disciplines, including Boeing window belts, Kansas license plates, metal fabrication, CNC machining, printing, parts assembly, and more. Using assistive technology, Center Industries prides itself on its ability to modify job stations for those with limited mobility.

By creating optimal options for productivity for all employees, CIC can contract with private and public industries on the same level as a traditional manufacturing company. Complementing CPRF's mission, CIC employees are paid competitively with benefits.

