



WE'VE NEVER LOST OUR FOCUS.

cprf

2013 ANNUAL REPORT

CEREBRAL PALSY RESEARCH FOUNDATION OF KANSAS

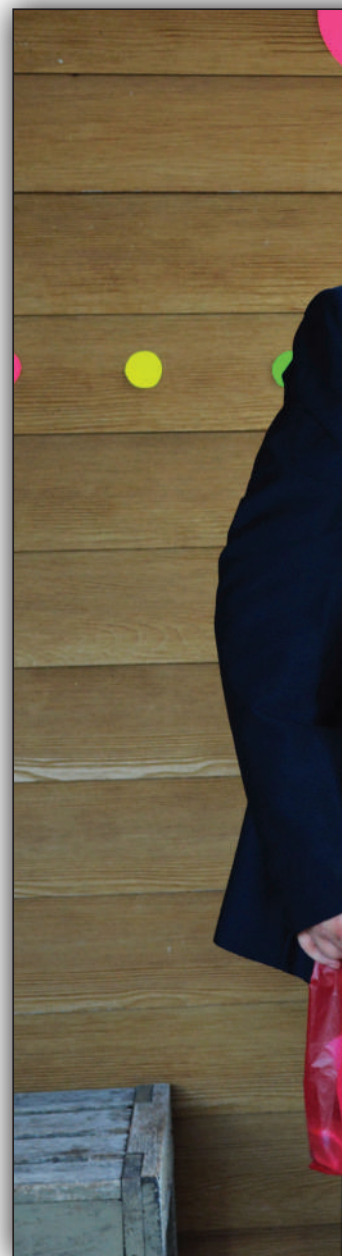
Our mission is to provide people with disabilities customized services, supports, and technologies, with an emphasis on employment and training options, to facilitate their chosen economic and personal independence.



TABLE OF CONTENTS

- 6** Board of Directors
- 7** Letters
 - John F. “Jack” Jonas Jr., Founder & President Emeritus*
 - Daniel M. Carney, Chairman of the Board*
 - Patrick T. Jonas, President & CEO*
- 10** Going to Work
 - Vocational Assessment*
 - Job Placement*
 - AmeriCorps Financial Empowerment Services*
 - Kansas Work Incentives Network*
- 12** Living in Your Community
 - Adult Day Services*
 - Case Management*
 - Daniel M. Carney Rehabilitation Engineering Center*
 - Timbers Apartments*
 - Timber Lines Transportation*
- 15** School of Adaptive Computer Training
- 16** Demographics
- 18** Financial Statements
- 20** River City Roll
- 22** Peter John Loux Award
- 24** Honor Roll of Donors
- 32** Affiliate Support Organizations
 - Center Industries Corporation*
 - BTCO, Inc.*

photo by Amy Franklin
Jason Friedel (standing) and Josh Friedel dress up as the Blues Brothers for the Timbers Fall Festival - an annual party for Timbers residents, put on by CPRF staff. This year's "Totally 80s" theme was a huge hit.





BOARD OF DIRECTORS

Chairman of the Board

Daniel M. Carney, Carney Investments

Vice Chairman

Deryl K. Schuster, Midwest Community Bank

Treasurer

Daniel J. Taylor, Taylor Enterprises, Inc.

Secretary

Michael C. Burrus, Catholic Charities

Joyce Smith, Assistant Secretary

Founder & President Emeritus

John F. “Jack” Jonas Jr.

Members

Dan F. Augustin, Real Base Investments

Robert P. Daniels, Anadarko Petroleum Corp.

Patrick T. Jonas, CPRF President & CEO

Vivian M. King

Dee Ann McIntyre

Linus Ohaebosim, D.O., Ohaebosim Clinic

Patricia Patterson, Lab Answer

Donald D. Sbarra, Sbarra Enterprises

Bill Simon, Freddy’s Frozen Custard, LLC

Kenneth J. Wagnon, Capital Enterprises, Inc.

DANIEL M. CARNEY

Chairman of the Board

The Cerebral Palsy Research Foundation of Kansas and our affiliates, Center Industries Corporation and Business Technology Career Opportunities, continue to expand their capabilities both in support services and in employment opportunities for those in our community with disabilities.

It is exciting to see the mission grow in new areas and to assist with the true independence that so many people with disabilities seek.

From new facility renovations at CPRF, exceptional commendations from the Air Force for BTCO's work, to the expansion of our aerospace capabilities at CIC, we have been truly blessed this year in facilitating our mission.

I would like to thank the dedicated staff and Board of Directors for their extraordinary efforts in making these possibilities a reality. In addition, I would like to commend all of the wonderful volunteers who assist us throughout the year – we are very fortunate to have your support.

Most importantly to those we serve, I thank you for your commitment and courage and wish you all the best in 2014.



JOHN F. "JACK" JONAS JR.

Founder and President Emeritus

I am very proud of the progress CPRF, CIC, and BTCO have made this year in fulfilling our mission of assisting individuals with disabilities to achieve their chosen path in life.

My vision with the founding of CPRF and CIC was to promote a dual opportunity system – one emphasizing a lifestyle of independence including education, accessibility, affordable housing, transportation, etc., and the other focusing on real employment, where equality in compensation, benefits, and promotion could be attained, regardless of physical ability. We have come a long way over the years in making these opportunities a reality for many.



photo by Chris Johnson

This year I am probably most proud to see where CIC has come. In doing so, I must acknowledge the wonderful support that our customers have shown over the years, especially Spirit AeroSystems, who entrusted us this year with a substantial sub-contract involving 737 aircraft production.

This will add a brand new capability for CIC that, just a few short years ago, was never thought achievable. In addition, Spirit has been very supportive of our BTCO imaging operations.

Spirit has proven to be an exceptional private sector partner and champion of our mission. We are truly grateful for their unyielding commitment to those we serve.

Finally as every year, I would like to thank our tremendous Board, staff, and volunteers who invest both time and resources each and every year in furthering our mission. We could not accomplish what we do without their efforts.

God Bless and have an outstanding 2014.

PATRICK T. JONAS

President and CEO



Each year is one of new adventures and challenges for any organization, and the same is true for CPRF.

This year, we weaved our way through the new KanCare system, expanded our IT training through our School of Adaptive Computer Training to include a classroom in Independence, Kan., grew our wheelchair seating clinic outreach to locations in Garden City, Hays, and Salina, Kan., and began an extensive capital renovation to our therapy and seating facilities, stemming from a long-term planning process that took place more than three years ago. I think it is fair to say that we have been very busy this year.

Through all of the transition and expansion that has taken place, one constant remains every year – the work of a tremendously talented staff, an inspirational group of volunteers, a most generous and dedicated Board of Directors, and a group of funders, from individuals to foundations, to government entities, to community partners, who believe in our mission of providing opportunities for people with disabilities.

We are extremely grateful to all who continue to assist us in facilitating training, employment, and customized services to those with disabilities we have the privilege to serve.

Thank you for an awesome 2013 and we look forward to an even more outstanding 2014.

VOCATIONAL ASSESSMENT

The CPRF Vocational Assessment team helps people identify job-applicable strengths to develop a plan for job training goals and future employment.

To create this plan, our staff uses interest inventories, aptitude measurements, personality outlines, surveys, and interviews to create a profile of each client, which recognizes personal advantages and opportunities to overcome weaknesses.

Staff also provides input on potential CPRF School of Adaptive Computer Training candidates.

JOB PLACEMENT

Despite the economic decline of recent years and the slow recovery process, the CPRF Job Placement department has successfully helped 220 people become employed in the past five years, most of

whom found employment after 90 days.

Our staff assists in the job hunt by educating clients on employers' expectations, changes in the job market, and what to expect from the jobs they seek. Another

big part of the initial process is to determine the immediate needs of each client: for instance, if a person must rely on public transportation, they can't work weekends or holidays, which means they must work first shift jobs, which in turn limits the employment search.

Though most clients can be placed in 90 days, a good attitude can dramatically affect the placement process, with some clients finding employment in only 30 days.

Desire, ambition, and a positive attitude help tremendously in the job hunting and learning process, and clients with the right attitude and willingness to learn can be placed much sooner.



photo by Kacee Shuler

Stacey Stalcup, BTCO, Inc. employee and former Job Placement client, prepares microfiche cards for scanning. After the cards are cleaned with a microfiber cloth to ensure a quality image, the cards are then placed a few at a time in a scanner for conversion to digital images.

AMERICORPS FINANCIAL EMPOWERMENT SERVICES

4,363 PEOPLE SERVED
THROUGHOUT THE UNITED STATES

PENSACOLA	WICHITA	DENVER	BRIDGEPORT	SEATTLE	MILWAUKEE	LANSING	BOSTON
443	830	643	536	109	931	474	397



photo by Barry Owens, United Way of the Plains
Donnie Otis (left), AmeriCorps member, helps Tony Canidy, AFES client, file his taxes.

Our AmeriCorps Financial Empowerment Services team provides financial education through seminars and workshops, income tax preparation, and disability benefits awareness to low-income individuals and families.

AFES partners with financial institutions, schools,

and other non-profit organizations to educate the community on personal finance basics, such as balancing a checkbook, how to save money, household budgeting, and more.

The AFES program began in 2009 with six locations throughout the United States.

Now the program has eight locations and served 4,363 people.

Headquartered at CPRF, the program has members throughout the United States in Boston; Bridgeport, W. Va.; Denver; Lansing, Mich.; Milwaukee; Pensacola, Fla.; and Seattle.

ADULT DAY SERVICES

The CPRF Adult Day program allows adults with disabilities a place to learn functional life skills, such as gardening, physical activity, making friends, and more.

In addition to the learning opportunities, our clients also benefit from volunteers throughout the community: music students from Wichita State University come twice a month for musical therapy, Sedgwick County Master Gardeners enlist the help of our clients to maintain the ADS garden, others bring in groups of therapy dogs, and some volunteers come to spruce up the space by painting or decorating when needed.

Our staff works hard to ensure that every day is fresh and exciting in Adult Day Services.

CASE MANAGEMENT

Our case managers provide services for people who need ongoing, daily living support to manage personal relationships. In addition, case management staff worked diligently throughout the past year to prepare their clients for healthcare restructuring under KanCare.



photo by Kacey Shuler
Deborah Klein, ADS client, lounges in the garden shade for some fresh air. The garden, maintained by Sedgwick County Master Gardeners, provides a great space for clients to take advantage of nice weather and to learn how to keep up a garden. Clients help the Master Gardeners plant flowers, pull weeds, rake, and more. The patio is also used for summer BBQs, and the wheelchair swing provides for relaxing, breezy recreation on warm days.

DANIEL M. CARNEY REHABILITATION ENGINEERING CENTER

A wheelchair is more than a means to get from A to B. The average person we serve spends all day, every day in his/her wheelchair, whether that person is at school, at home, at work, going to the store, or any other number of daily activities.

That is why the right seating system is crucial for people who use wheelchairs. Each client meets with an occupational/physical therapist, who determines wheelchair specifications based on client needs, after which our posture seating technicians at the Carney Center build customized wheelchairs and seating systems that meet each person's individual needs – all under one roof.

In addition to the benefit of decreased communicational margins of error between specialists, this kind of personalized attention ensures that the risk of pressure sores and other adverse conditions of being stationary are minimized.

The Carney Center is the largest of the three posture seating clinics in the state.

MAINTENANCE-LEVEL PHYSICAL THERAPY

Our certified rehabilitative aide helps Timbers residents improve their muscle tone and flexibility through adaptive, accessible fitness equipment, such as parallel bars for supported walking, stationary bikes to build leg muscle, hand cycles for arm work, mats for assisted stretching, a para-gym for weight training, and more. The maintenance therapy program is a division of the Carney Center.



photo by Michael Schulz

Paige Hurt-Schulz, Carney Center client, drives her stuffed pony around in the back of her wheelchair-powered "truck" on Halloween.

THE TIMBERS

The Timbers is a 100-unit apartment complex built specifically for people with disabilities. Built in 1979, it was the first U.S. Housing and Urban Development property designed to work for people who use wheelchairs.

Each unit features roll-under counters, a roll-in shower, a mirrored stove, wide hallways, accessible switches, and more. The Timbers also has an in-ground pool with a lifeguard on duty and a lift.

Since its construction, The Timbers has won multiple HUD awards and commendations for being a high-performing property.

TIMBER LINES TRANSPORTATION

Timber Lines provides accessible rides for work, doctor's appointments, trips to the grocery store, or wherever else riders need to go. Consistently lauded as one of the most important services for people with disabilities, accessible transportation helps people achieve independence.



Photo strip courtesy Art's Photography

Photo on left by Amy Franklin

(top) Tawnya Kerns, Timbers resident, rocks out in the photo booth provided at the Timbers Fall Festival, while Cheryl Adams, Timbers resident, does some target practice with a Nerf gun. This year's 80's theme was a big hit with residents and volunteers alike.

SCHOOL OF ADAPTIVE COMPUTER TRAINING

SACT staff helps people from high schoolers to older adults gain useful, practical computer skills to help give them marketable employment skills.

Through a partnership with Unified School District 259 and the Workforce Alliance of South Central Kansas, we provide Microsoft certification classes to district high school juniors and seniors who are in the special education program. In addition to earning Microsoft-approved certifications in Word and Excel, students can also benefit from life-applicable, qualified financial education through the CPRF AmeriCorps Financial Empowerment Services program. The AFES team helps students learn how to balance a checkbook, create a personal budget, how to use credit, and more practical advice.

In addition to students who attend the main campus, the SACT offers remote learning classes for adults in Mayetta and Independence, Kan., and for high school students in special education programs in Butler County.

The SACT Business Advisory Council ensures the school's curriculum for all students remains relevant to current market requirements.

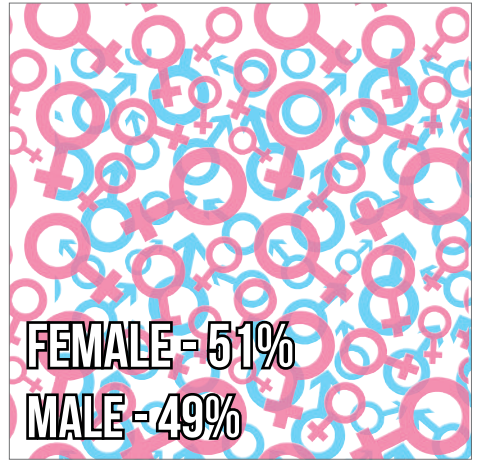
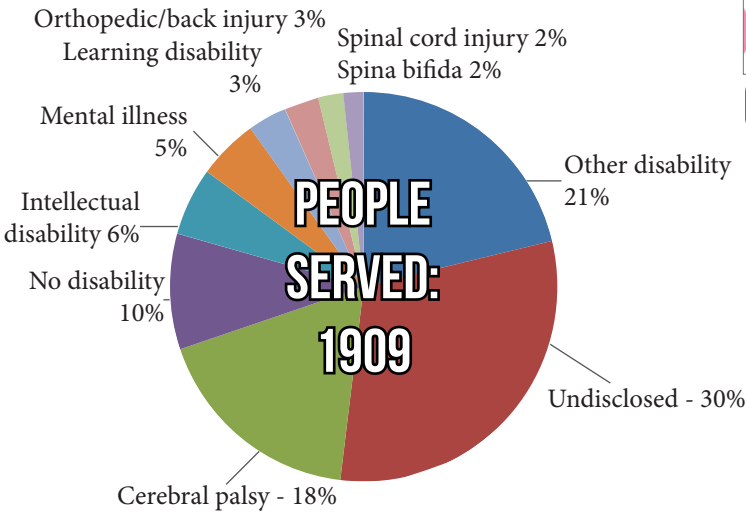


photo by Kacey Shuler
(LrR) Megan Gilpin and Belinda Williams, SACT Youth Program students, show off their certificates for completing the Business Fundamentals for Youth program.

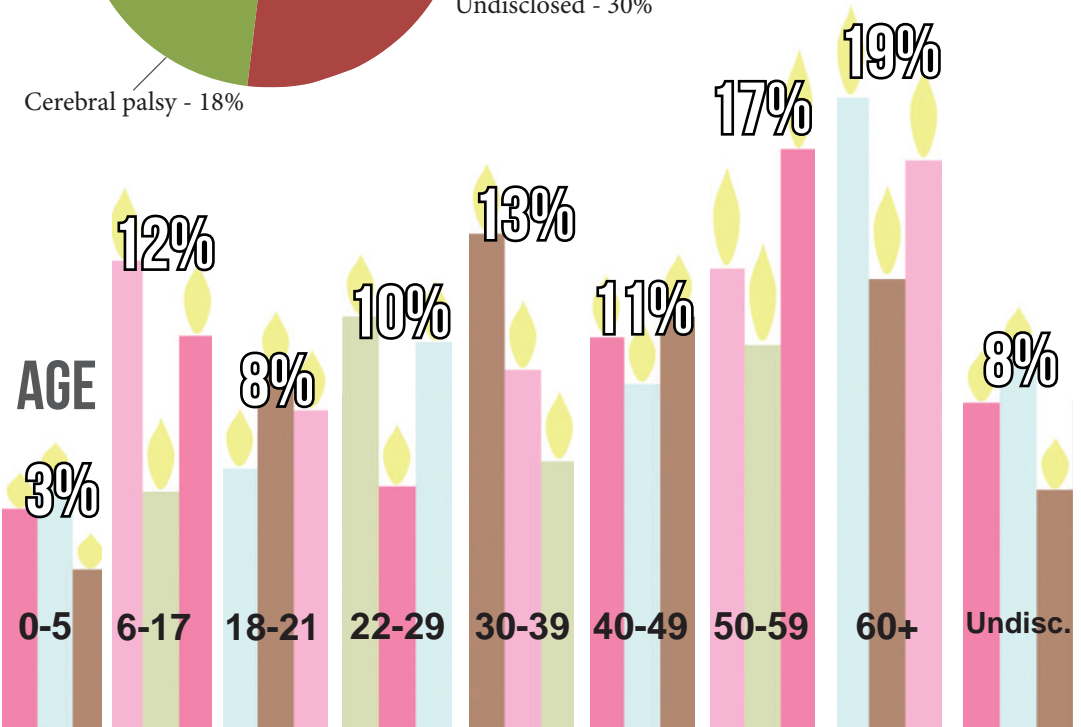
CLIENT DEMOGRAPHICS

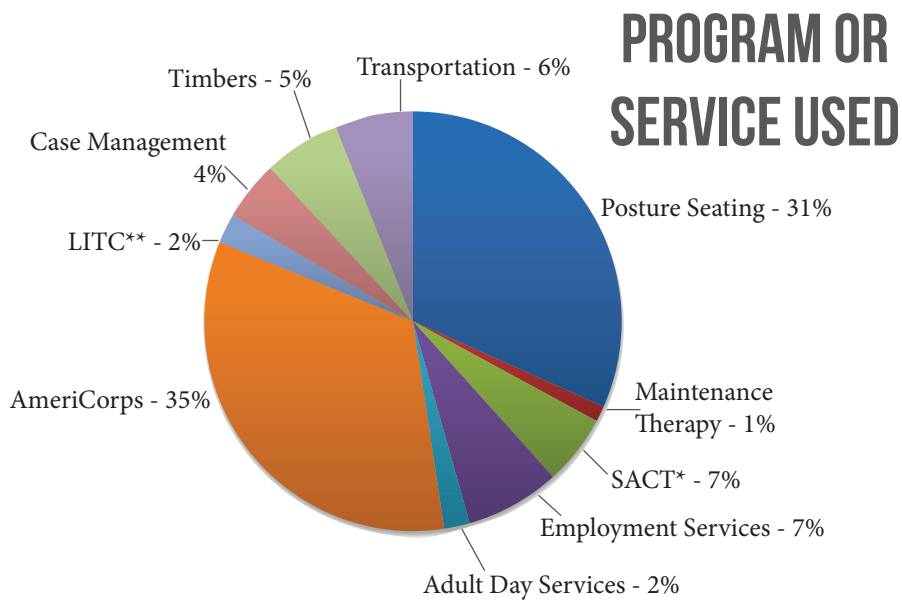
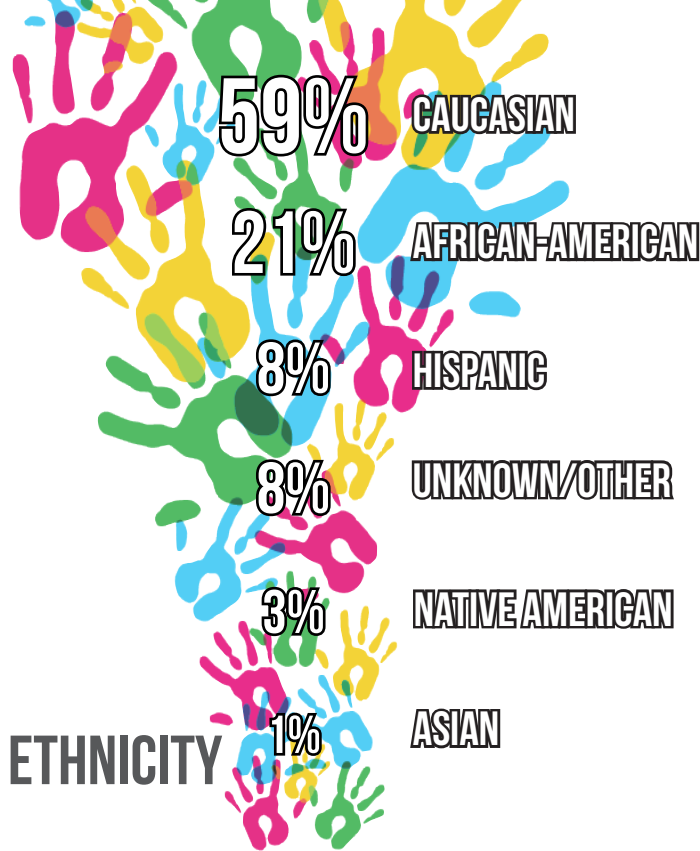
June 30, 2012 - July 1, 2013

PRIMARY TYPE OF DISABILITY



GENDER





* SACT - School of Adaptive Computer Training

**LITC - Low-Income Taxpayer Clinic. The LITC program no longer operates.

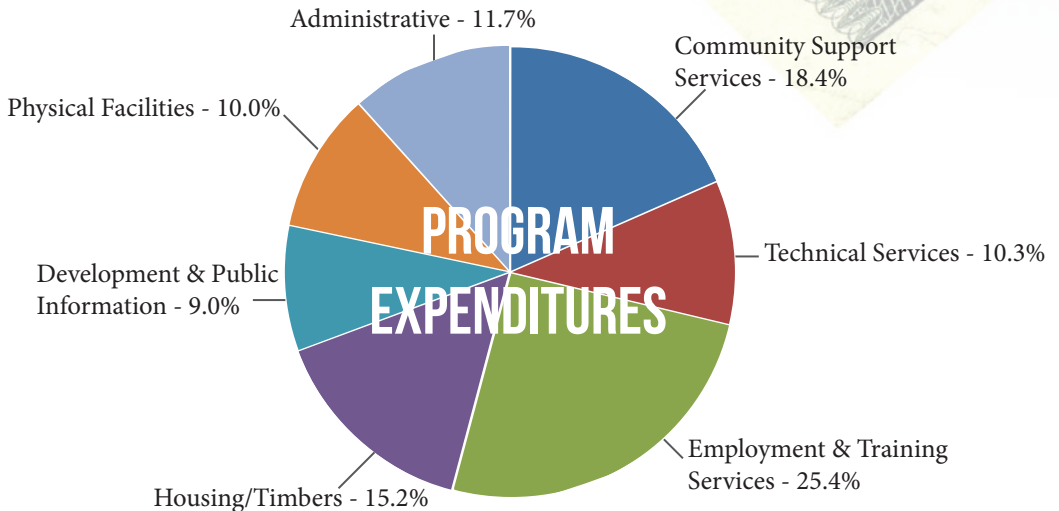
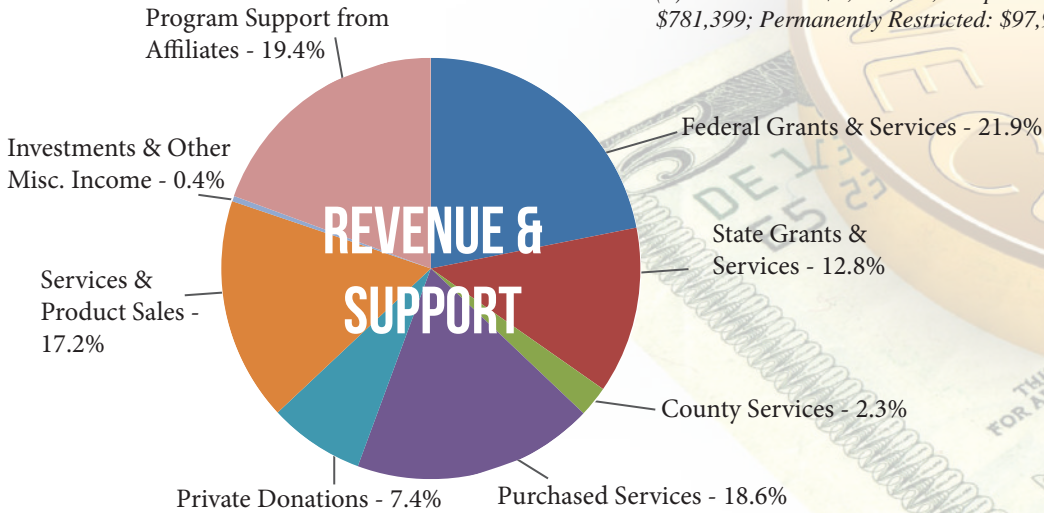
2012 FINANCIAL REPORT

Combined Abbreviated Statement of Financial Position

Current Assets: \$3,653,082
 Non-Current Assets: \$563,628
 Net Capital Assets: \$8,639,904
Total Assets: \$12,856,614

Current Liabilities: \$1,067,535
 Non-Current Liabilities: \$2,153,983
 Combined Net Assets (1): \$9,748,897
Total Liabilities & Net Assets: \$12,967,415

(1) Unrestricted: \$9,324,217; Temporarily Restricted: \$781,399; Permanently Restricted: \$97,907



2013 FINANCIAL REPORT

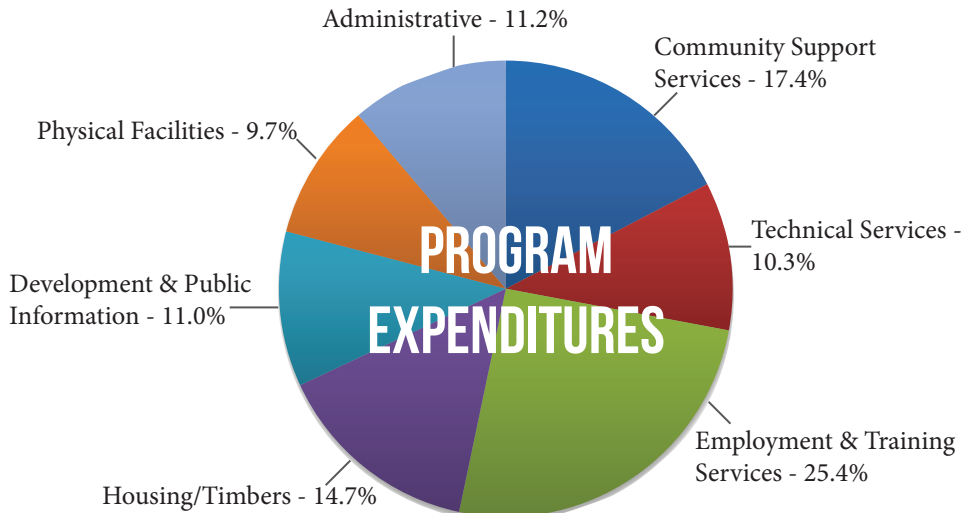
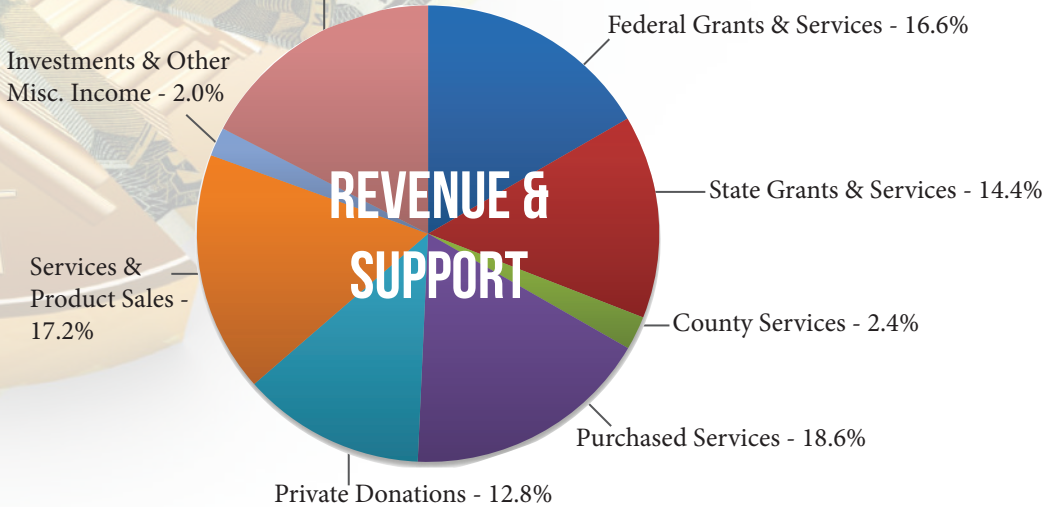
Combined Abbreviated Statement of Financial Position

Current Assets: \$4,396,613
Non-Current Assets: \$441,650
Net Capital Assets: \$8,463,663
Total Assets: \$13,301,926

Current Liabilities: \$810,738
Non-Current Liabilities: \$1,658,025
Combined Net Assets (1): \$10,833,163
Total Liabilities & Net Assets: \$13,301,926

(1) *Unrestricted: \$9,750,752; Temporarily Restricted: \$984,504; Permanently Restricted: \$97,907*

Program Support from
Affiliates - 17.4%



RIVER CITY ROLL 2013: THE SKY IS THE LIMIT

More than 400 guests attended CPRF's 2013 River City Roll: The Sky is the Limit event, helping CPRF soar to new heights in providing equipment for people with disabilities by raising a record \$150,000.

The event, held June 29 at the Wichita Country Club, benefits the organization's Equipment Fund,

which helps people with disabilities obtain equipment such as wheelchairs, ramps, head arrays, and more.

Last year alone, CPRF/UCP provided over \$400,000 to more than 1,000 Kansans in need of adaptive equipment.

This year's event featured a buffet with inter-

national cuisine (including French, Italian, Hawaiian, and Mexican), live and silent auctions, a live band, and more.

Auction items ranged from family portraits, to a dueling chef dinner for eight, to a hot air balloon ride, to an expenses-paid trip to France.



photo by SR Photography
(Ltr) April Miller, Joe Tigert, Sally & Bill Simon, CPRF Board of Directors member.



photo by Amy
The event featured a variety of cuisine from around the world, including French, Hawaiian, Mexican, Italian s



photo by Amy Franklin

Dick Honeyman and Bonnie Bing, event emcees.



photo by Jason Crile

An auctioneer takes a bid during the live auction.



Franklin
the
styles.



photo by Jason Crile

Susan Taylor wins a raffle ticket prize.



photo by Amy Franklin

Eiffel Tower ice sculpture by Damien Lehman, Wichita
Country Club Executive Chef

PETER JOHN LOUX AWARD

The Peter John Loux Award provides an annual recognition gift to Kansans who demonstrate exceptional desire and dedication in overcoming their physical or neurological disabilities.

The award is an endowed gift established by the late Richard C. "Pete" Loux in memory of his son Peter John. Mr. Loux, a lifelong advocate for people with disabilities, used his influence as the Kansas House of Representatives Minority Leader to help

launch Center Industries Corporation in 1975.

He was also a founding member of the CPRF Board of Directors, serving from 1972 to 2004.

Any Kansas resident 18 years of age or older with a congenital or acquired physical or neurological disability may be nominated by another person or apply on their own behalf.

For more information, contact Jennifer Knight at (316) 652-1552 or JenniferK@cprf.org.

Don Wistuba, Mark Greene, and Carmen Thomas received the 25th annual Peter John Loux Award for their determination in overcoming their disabilities. Each winner received \$1,000 and a plaque commemorating their achievement.

Wistuba was born blind, but he never let

his diagnosis stop him from going to school, playing sports, or even becoming an entrepreneur. He owns the Kansas Capitol Snack Shop – a store he has operated in the state Capitol Building for 37 years.

Due to construction in the Capitol Building, Wistuba has had to move locations three times, which entails moving product, reestablishing business operations, and relearning how to navigate his surroundings by counting his steps and identifying fixtures. Wistuba also speed-walks two or three miles almost every morning to stay in shape, and his success in life has been acknowledged by the Kansas House and Senate, which both passed unanimous resolutions congratulating him on his many years of service in the Capitol.

Born with spina bifida, Greene (of Shawnee) graduated from the University of Kansas in 1994 with a Bachelor's of Fine Arts degree in Theatre Design. Greene has worked for more than 18 years at the KU Lied Center and the Johnson County Community College Carlsen Center. He is also an active member of the Democratic Party and was a Kansas state delegate, representing people with disabilities, at the 2012 Democratic National Convention.



photo by Kacee Shuler

(LtR) Award committee: Jennifer Knight, CPRF Development director; Dave Jones, United Cerebral Palsy Executive director; Patrick Terick, CPRF Governmental Activities director. Award winners: Don Wistuba and Mark Greene (seated).

Greene serves as a member of the Johnson County Transportation Commission's Operation's Committee and as co-chair of the Accessibility Sub-Committee. He frequently travels to Topeka as an advocate for people with disabilities.

Greene is currently on dialysis for a kidney condition related to the paralysis caused by spina bifida and is on a waiting list to receive a transplant. He spends three days a week, three hours each time in dialysis.

Thomas was born with bilateral amelia, a disease that left her without arms and with shorter legs. While she can walk for short distances at home, she relies mainly on the use of a specialized wheelchair with a joystick she can operate with her foot.

Thomas graduated from the University of Kansas in May 2012 with a Bachelor's of Fine Arts degree in Applied Behavioral Science, with an emphasis in Early Childhood Autism Intervention. With assistance from Vocational Rehabilitation Services and other funding, she was able to live with a roommate in the KU dorms for

her first two years. While in class, she used a clear plastic tube that fit over her pencil eraser to take notes.

In addition to her scholarly achievements, she also served as Social Chair and President of "Ablehawks" – a KU disability rights group. Through this program, she attended nearly every KU basketball game at Allen

Fieldhouse and became acquainted with Coach Bill Self and some of the players.

Following her graduation, she accepted a job as a para-professional with the Olathe School District, working with children who have autism. She observes, records data, creates visual aids, and

provides behavioral advice for teachers, and plans to use this real-world experience to go to graduate school to become an Autism Specialist for the district.

She also volunteers at Camp Barnabas – a summer camp for children with special needs.



photo by Kacee Shuler

(LtR) Dave Jones; Jennifer Knight; Patrick Terick; John F. "Jack" Jonas Jr., CPRF founder and president emeritus; Chrysa Honeyman, Award Selection Committee; and Carmen Thomas, award winner.

HONOR ROLL OF DONORS

JOHN F. JONAS AWARD

Recognizing donors who contributed \$200,000 in a lifetime or \$1 million through a deferred gift

Anonymous
Bank of America
Rita and Gene Bicknell
The Boeing Company
City of Wichita—HOME
Investment Partnership
Program Grant
Myra and Tom Devlin
EDS Foundation
EDS Corporation
Federal Home Loan Bank of
Topeka
INTRUST Bank
+Evalyn B. Joachim
William T. Kemper
Foundation—Commerce
Bank, Trustee and
Commerce Bancshares
Foundation
The Kresge Foundation
The Forrest C. Lattner
Foundation
The J. E. & L. E. Mabee
Foundation
Lynn and +Robert Moore
Patricia and +Bob Patterson
+Carl Rohwer
Susan and Les Rudd
Sandlian Realty
Pat and Bob Schmidt
Sandi and Brad Schreck
Sally and Bill Simon

Kate and Dan Taylor
Kenneth J. Wagnon
Foundation

CHAIRMAN'S AWARD

Recognizing donors who contributed \$100,000 in a lifetime or \$500,000 through a deferred gift

Larry and Sally Arbuckle
Cessna Foundation
Fred C. and Mary R. Koch
Foundation
*Maura and Bob Geist
Microsoft Corp.
Mary Lynn and William L.
Oliver
Raytheon Aircraft Company
Diane and +Darrel Rolph
Donald D. Sbarra
Alice and Dale E. Wiggins

FOUNDER'S AWARD

Recognizing donors who made an outright gift of \$10,000 or more, \$50,000 in a lifetime, or \$250,000 through a deferred gift

Virginia and George Ablah
Anadarko Petroleum
Corporation
Anonymous
Bailey Lauerman
Beech Charitable Gift Fund
Bombardier Learjet Care Fund
Sherry and Bernie Butler
Candlewood Hotel

Michael D. Carney
Cessna Aircraft Company
Champions for Charity
*Steve Clark
Robert Daniels and Family
Davis-Moore Auto Group
DCSS Ability, LLC
DeVore Foundation
Digital Consulting &
Software Services, Inc.
Barry L. and Paula M.
Downing Foundation
Employees Community Fund
of Boeing Wichita
Emprise Bank
eoVision
EVCON Industries Inc.
Fahnestock Heating, Air
Conditioning, and Electric
Fran Jabara Family
Foundation, Inc.
Gossen Livingston
Associates, Inc.
Dane G. Hansen Foundation
Libba and Wink Hartman
+Veryle Heriford Estate
+Dan Hesse
Sherri and +Larry Hiebert
Edna Hightower Estate
Beverly and John F. Jonas
+Lilan Kane
Kansas Health Foundation
Key Construction, Inc.
John S. & James L. Knight
Foundation
Koch Industries, Inc.
*Rex C. & Marie Elizabeth
Larabee Trust
Rose Lichtenstein Estate

+ Deceased

*New

+Richard C. "Pete" Loux
 *Dee Ann McIntyre
 McIntyre Foundation
 Helen and Russell W. Meyer, Jr.
 Multimedia Cablevision
 Multimedia Foundation
 The Victor Murdock
 Foundation
 I.A. O'Shaughnessy
 Foundation
 +Mary Jean and +Larry Payne
 POET Ethanol Products, LLC
 June and +Patrick Regan
 Salesforce.com, Inc.
 SBC Foundation
 Robert E. and Patricia A.
 Schmidt Foundation
 Anita and Deryl Schuster
 Sullivan Higdon & Sink
 United Methodist Health
 Ministry Fund
 Kate and Bill Walsh, Jr.
 Westar Energy Foundation
 Wichita Greyhound
 Charities, Inc.
 K. T. Wiedemann Foundation
 Winter Enterprises

HERITAGE AWARD

Recognizing donors who made an outright gift of \$5,000 or more, \$25,000 in a lifetime, or \$100,000 through a deferred gift

Gladys and Buck Alley
 American National Bank
 Dot and Dan Augustin
 Barton Charitable Foundation
 Bicknell Family Foundation
 Fund

Burnham Products
 Kathy and Mike Burrus
 Cindy and Matt Carney
 Frank Carney
 Creative Ventures &
 Capital, Inc.
 David Egan
 Janis Friesen
 Galichia Foundation
 Gannette Foundation
 *Grand Chapter of Kansas
 Order of the Eastern Star
 *Craig Haines
 Nancy and Richard Hassur
 Hawker Beechcraft
 Corporation
 R.D. and Joan Dale Hubbard
 Foundation
 IMA, Inc.
 Inter-First Company LLC
 Nita and Joey Jackson
 Pam and Pat Jonas
 Diana and Richard Kasper
 Sandy and +Ben Kasper
 Kathy and Herb Krumsick
 The Carl V. and Honore G.
 Maloney Foundation
 Nancy and Hal McCoy
 Midwest Corporate Aviation
 Murfin Drilling Co., Inc.
 Norma R. Murphy
 Kathleen and Patrick
 O'Shaughnessy
 Prudential Securities
 Laura and Jack Richmond
 Gwen and +J.B. Severt
 Pat and Jack Shelton
 Connie and Roger A. Sink
 +Clifford Stone

THORN Americas
 Universal Lubricants
 Polly and +Patrick Vickers
 Vornado Air LLC
 Wichita Community
 Foundation

FRIENDS OF CPRF

Recognizing donors who supported CPRF with a gift from July 1, 2012 to June 30, 2013

A Brown Retail Liquor
 Janis and Jerry Aaron
 ABC Discount Wine & Spirits
 Absecon Lighthouse
 Absolute Vintage
 Charlene and Dan Ackerman
 Cheryl Adams
 Kim and Keith Adams
 Nikki Adams
 Hendrik Adolfs
 Todd Aikins, III
 Kristene Alexander
 All Star Sports
 Stacie Allen
 The Alley & Entertainment
 Center
 Aluminum Precision
 Products, Inc.
 Pamela Amott
 Marsha Anderson
 Thornton Anderson
 Ron Andra
 Angie's Custom Bulletin
 Boards
 Anonymous
 Angela and Steven Ansel
 Kavitha Arabindoo
 Meg Araujo

Arctic Glacier Texas Inc.	Teresa and Steve Boyd	Cocoa Dolce
Orlin E. Ard, Jr. Revocable Trust	Stephanie and Sean Bracy	Coleman Company
Sheila and Dr. Chris Arensberg	Bradley Fair	Conco Construction
Dorothy Armstrong	Bradley's Bones	Kay and Cory Conklin
Armstrong Charitable Fund	Karen and Arden Bradshaw	Yvonne and Charlie Cookson
Artistic Limousine	Catherine Brady	Donna and Carl Coonrod
Sally and Paul Attwater, II	Marla and Jeff Brockmeyer	Dorothy and Larry Cornelson
Kim and Paul Attwater, III	Brockmeyer Inc.	Marvin Cornelson Family
Automatic Doors of Kansas, Inc.	Lucinda Brothers-Full	Kimberly and Mark Cotton
Marcia and Ted Ayres	Wendy & Alex Brzezny	Country Bumpkins of Wichita
Bagatelle Bakery	BTCO, Inc.	Courtyard by Marriott-Wichita at Old Town
Janet Bagwell	W.P. Buckthal	Cox Communications, Inc.
Rhonda and Carl Baker	Iris Buell	Sue Ella and David Creager
Tara Ball	Build-A-Bear Workshop	Anne and Richard Cree
Bank of the West	Carol Burchfield	Cutting Edge Resources, Inc.
Kathy Bankey	Dorothy and Bill Burmeier	Northrock Dairy Queen
+Patricia Barber	Debra Buswell	Lois and Jim Daniels
Cheryl and Dave Bean	Gaylene and Gary Butler	Holly Lund Daniels
Beau Monde Day Spa	Christina Butler	Danna and Mark Danner
Bed Bath & Beyond	Cabaret Old Town	Dena and Mike Dassel
Debbie and Arlin Beer	Cabela's	Cherie Davis
Berry Foundation	Mary Jo and Dr. Dan Caliendo	Bob Deal
Sondra Betris	Paul Calkins	Marilyn and Jack DeBoer
James Bevilacqua	Traci Callahan	Betty and Bob Decker
BG Products, Inc.	Yolanda and Gene Camarena	Lynn and Lance Deckinger
Sharon Bishop	Sally and Greg Cannata	Delta Dental of Kansas
Wichita Catholic Secondary Schools Bishop Carroll High School	Dana and Rick Capps	Devore Family Fund
Bookkeepers Business Systems, Inc.	Tracey and John Carlile	Diamond W Entertainment
Janice and Alban Born	LD Carney & Associates Inc.	Digital Office Systems
Arthur Borst	Kay Carroll	Dillons
Kathleen and Leo Borst	Beverly Cash	Diane and Michael Dixon
Botanica The Wichita Gardens	Georgia Chandler	Docuplex Graphics
Paul Bowen Photography	Anna Chastain	Patti and Mark Doll
Orleane Bowman	Cheddar's	James Donelson
	Cherry Berry	Raymond Drouhard
	Sally and Don Chesser	Dueling Chefs
	Chester's Chophouse	Marilyn and John Dugan
	Chili's	Sarah and Ryan Dugan
	Christopher Clark	

+ Deceased
*New



photo by Amy Franklin

Joyce Smith (left), CPRF Board of Directors, greets Emily Ragsdale, Timbers resident, at this year's "Totally 80s" Timbers Fall Festival.

Karissa and Mark Dugan
 Peggy and Dr. Gregory Duick
 Joanne and Jim Dumler
 Geraldine Dunstan
 Ronald Dyson
 Debra and Randall Ehling
 Ehrhardt Tool and Machine
 Co., Inc.
 Eighth Day Books
 Margaret and Randy Ellenz
 Mary Frances Ellis
 Tonya and Matthew Elsea
 Nelson Escalante
 Kathleen Evans
 Joanie and Richard Ewy
 Exploration Place
 Genny Faltermeier

Bill Farha
 Brenda and +Dr. George Farha
 Joan and Lynn Farrell
 The Farris Wheel
 Barbara Faust
 Beth and Claudio Ferraro
 Deanna Ferris and Family
 Fidelity Bank
 Loweta and Donald Finlay
 Mary E. Finney Revocable
 Living Trust
 Firefly Yoga Studio
 The First Place
 Kelly Fix
 Lori and Chad Folkerts
 Cindy Luke Fortune
 Fowler State Bank

Frankenberg & Johnson DDS
 Rhonda and Bob Franssen
 Freddy's Frozen Custard &
 Steakburgers
 Stephen and Patti Frese
 Stewart Friedel
 Charlotte and Sterling Friedman
 Friesen Tool Co., Inc.
 Frou Frou
 Marilyn and Charles
 Frydendall
 Dana and Larry Fugate
 Furr's Family Dining
 Teresa and Don Gabel
 Kim and Cindy Gamble
 Charlene and Sam Gemar
 Jan and Gary Geringer Jr
 Kristy and Levan Gerstner
 Get Reel Productions
 Carol Gettle
 A. Jill Gibb
 GM Clotheshorse
 Lora and Walter Goff
 The Golf Warehouse
 Jeanne and Russ Gordon
 Ruth and Ron Gorges
 GoRun Wichita
 O.S. Gossard Fund
 Harlan Graber
 Carole and Allen Graber
 Keith Gravel
 Great Harvest Bread Co.
 Darcie and Bryan Green
 Linda Gregory Photography
 Janet and Gary Griffith
 Peggy Griffith
 Jane Ann and Harlan Hackett
 Leah Hammar
 Phyllis and Paul Hampel

Scott Hampel	Sharon and Max Huffman	KC Chiefs
Bill Hamrick	Carole and Bob Hull	Phyllis Kellerman
Handyman Matters	Connie and Hugo Huslig	Diane and David Kemp
Dennis Hanisch	Beth and Dan Hutchins	Glenn Kerbs
Patricia Hansen	Hyatt Regency Wichita	Cheryl and Pat Kerivan
Leslie and Owen Hansen	Imagine That Toys	Richard M. & Hannah R. Kerschen Fund
Jane and Randy Harder	Infosync Services	KGS/Westar Retirees
Jacki and Carl Harrison	Mariah Ingram	Joan and Roger Kincaid
Debra Hartung	Innovative Golf	Jeannine and Alan King
Doris and Fred Harvey	Intrust Bank Employees	Vivian and Nick King
Hatman Jack's Wichita Hat Works	Mary Irwin Towns	Jodi and Doug Kirkland
Heads Shoe Store	J.S. Ventures, Inc.-Applebee's	Mindy and Jason Kiser
Connie Heckman	Bobbie and Alan Jaax	Sharon and John Kiser
Vida Heinrichs	Phyllis and Lou Jacobs	Carolyn Kitchens
Hen Feathers Quilt Shop	Jajo Inc.	Downtown Wichita Kiwanis Foundation
Helen Henry	Nancy Jarus	K. Lane's
Leeanna and Todd Herman	Mary and Mike Jenkins	Simona Klein
Lisa and Mitch Herren	Deann Jenkins	Diane and Richard Klingman
Debbie Hersh	Joe's Car Wash	Jennifer Knight
Herzog Environmental Inc.	Ann and Alan Johnson	Jane and Bob Knight
Jane and Phil Hesse	Dee and Mark Johnson	Darlene and Eric Knorr
Hiebert & Decker CPA's, Chtd.	Sally and Jerry Jonas	Peggy and Dr. John Knudtson
Ila Higgins	Shelley and Peter Jonas	Kim and Don Knutson
Hiland Dairy Company	Julie and Paul Jonas	Joanie and Dr. Tim Koehler
David Hill	Winifred and Dave Jones	Mary Francis and Harold Koehler
Deanna and Larry Hillyard	Larry Jones	Dajana Komadina
Hilton Garden Inn Wichita	Shonna, Drew and Mackenzie Jones	Janis Krohe, PhD
Hinkle Law Firm LLC	Mindy Jurgens	Larkspur Restaurant & Grill
Edith Hinrichs	Kansas City Royals Baseball	Wayne Larsen
Karen Hodge	Kansas Cosmosphere and Space Center	Laser Quest
Eric Hodge	Kansas Gift Shop	Lashley Family Dentistry
Hog Wild Pit Bar-B-Que	Kansas Truck Equipment Company, Inc.	Barbara Latta
Jane Holcomb	Karg Art Glass	Gretchen Lauby
Holiday Inn Express	Esther and Eldon Kater	Lawn Appeal
Chrysa and Jim Honeyman	Sarah and Brandon Kauffman	LDF Sales & Distributing
Horton's Furniture	Jolene and Doug Kaufman	Fran Lee
Roberta Houston		
Genette and Terry Huelsman		

+ Deceased
*New

Allison and Don Lemons	Bill Mickel	Kris Olson
Ralph Levy	Mid American Credit Union	Edith Orth
Cynthia and Marcus Loganbill	Midwest Kia	Natalie Ortiz
Phylliss Long	William Miller	Ozark Mountain
Judith and Virgil Love	Paula and Ken Miller	Technologies Inc.
LuCinda's	Anna and Belden Mills	P&E Building Services LLC
Carol Lujano	Dawn and Brad Minear	Pat and Jack Painter
Mary and Robert Malley	Mission Thrift Shop	Henry Parker
Mike Maloney	Models & Images	Party Express Bus
Marilyn Maneely	Mary Ann, Traci, Chad and	Sarah and Tony Patterson
Michelle and William	Larry Moglestad	Cherrell Pearson
Mannebach	Kathie and Dave Montague	Gavin Peters Photography
Jan Mansfield	Lois and John Moon	Mike Phillips
Kyle Markham	Sam and Jane Moore and	Connie and James Phillips
Barbara and Mark Martin	Family	Piccadilly Grill
Donna and Kim Mastalio	Marlane and Jack Morris	Julianne Post
Maxine's	Norma Morris	Terry Powell
Kathy and Jeff May	Mosley Street Melodrama	Mildred Powers
Loretta and Bob Mayfield	Karla Mounts	Prairie Pilot Club of
McAlister's	Nancy and Kevin Mullen	Wichita, Inc.
Sharon McEndarfer	Cheri and John Mullen	Precision Grooming
Betty McGinty	Dee Dee Murry	Pro Vise Management
June and Bob McGrath	Museum of World Treasures	Group LLC
Robert McGrath	Music Scene	Professional Mechanical
Sharon and Bob McGregor	Music Theatre of Wichita	Contractors
Ella Mae McGuire	Jane and Mark Myers	Progressions Salon & Day Spa
Sandy Medley	Vi and Galen Myers	Michelle Pryor
Lisa and Alex Meitzner	Tambra and Brett Myers	Shirley Quick and Drew
Kelli and Dr. Theo Mellion	Jacqueline Nagel	Livesay
John Mertes	National Seating & Mobility	Randolph Kelly Photography
Alan, Emily and Trevor	Kendal Nelson	Randy Cooper's Fine Jewelry
Metzger	Michelle Newell	Rayer's Bearden Stained Glass
Debra and David Metzler	David Niedens	Sharol and Robert Rasberry
Thomas Meyer	Phyllis Nordt	Sherry and Chip Reed
Ronnie and Sue Meyer	Northwest High School	Geney Reed
Regina Meyer	Tennis Players	Reflection Ridge Chiropractic
Russ Meyer	Nouveau	Mary Beth and Patrick Regan
Loretta Meyers	Judith and John O'Connor	RJ and JJ Reichenberger
Elaine and Wayne Meyers	Old Chicago Pizza & Taproom	Reinemund Family

Foundation
Terri Rice
Gina and Bob Richardson
Patricia Rickman
Sarah and DC Rivers
Susan and Jim Robinson
Janet and Dr. David Robl
Vera and Steve Robl
Shirley and Richard Roeckers
Pam and Tom Rogers
Sara Rogers
Rolling Hills Wine & Spirits
Gayle and Jim Roose

Shari Rose
Thomas Ruane
Rudd Oakville Estates
Debbie Rundell and Wendy
Weible
Russ and Helen Meyer
Charitable Trust
Robin and Brad Russell
Rusty Eck Ford
Ruth Ryan
S&S Meats
Sam's Club
Maria Santillan

Carlos O'Kelly's
Jackie Sauder
Lana and Keene Schaaf
Pamela Schall
Kate and Danny Scheer
Jerry Schmeissner
Renea and Bill Schmitz
Teresa Schneider
Scott Schneider
Vi and George Schuckman
Tammy Schuster
Sedgwick County Zoo
Leanna and Troy Setzkorn
Lucille and John Severe
Kathy and Eric Sexton
Dorothea Seymour
Matthew Sheets
Kathleen Shoaf
Sierra Hills Golf Club
Jon Simon
Rhonda and Terry Sizemore
Kirsten Skogerson and Nils
Hakansson
Mary Ann and Paul Skolaut
Karen and William Slater
Joyce and Odell Smith
Sheila Smith
Leslie and David Sosnowski
Southwest Paper Company
Inc.
Spangles
Specs
Alvena Spies
Elizabeth and Wayne Spohn
SR Photography
Standard Beverage
Star Lumber & Supply
Mona and Dan Stecklein
Stephanie Steele



photo by Kacee Shuler

Robert Hammer, BTCO employee, advocates before the Wichita City Council.

+ *Deceased*
**New*

Jill and Michael Steiner
Stems
Dalene Stevens
Ashle and Jamie Stratton
Subway
Sugar Sisters
Richard Sumption
Superior Office
Susan's
Jennifer and Ben Sweat
Tallgrass Film Festival
Tanganyika Wildlife Park
Tangled Up Salon
Marie and James Taylor
Teri and Steven Taylor
Judy and Pat Terick
Regina and Alex Terick
Texas Roadhouse
TGI Fridays
The Spice Merchant and
Company
Emily and Andrew Thengvall
Things Remembered
Judith and Carl Thompson
Paulette and James Thomson
Dyan and Dave Thornton
Harriet and David Thornton
Sheila and Joe Tigert
Elsie and Charles Tincher
TLC Muffins
Carol Towey
Trio's
Christie and Tom Triplett
Ted Troth
Dawn Truman
Trump Taj Mahal
Two Brothers BBQ
Anna and Paul Uhlig
Sarah and Brian Ullmann

Ultra Modern Pool & Patio
Lynn and Jerry Ungerecht
Unified School District 259
US Fence Co. of KC
Sue Usry
James Utt
Valent Aerostructures
Kathleen and John Baker
Van Saun
Nancy Vannerson
Diane and Lonnie Vaughan
Lisa Vervena and Orhan
Soykan
Via Christi Health
Susan Vickers
Village Inn
Villas Homeowners Assoc.
Ken Wagon
Beverly Walker
Lisa Wallace Al-Rukabi
Dan Waller
Walmart
Linda and Randy Ward
Karen, Carl and Leah Warren
Warren Theatre East
Marguerite Warriner
Connie and Monte Warrington
Susan Washee
Doris Watkins and Family
Tania and Trent Watson
+Pamela and Brad Watson
Lawrence Wayne
Pat and Bill Wells
Blake Wells
Kathleen and Barry West
Marietta and Dave Wetzell
WG Enterprises LLC
Michele and David Wheeler
Lora Lee and William White

White House Black Market
Angie and Bob Whiteman
Wichita Riding Academy Inc.
Wichita-Sedgwick County
Historical Museum
Wichita State University
Wichita Vending
Wichita Wingnuts
Merita and Jim Wiesen
Vicki and Glen Willeesen
Karen Williams
Maureen Wilson
Frances and Lyle Winder
Virginia and Gary Wise
Barbara Wiskow
Diana Wolfe
WSU Alumni
Charles Wurth
Xclusive Bartending
Roberta Yacko
Che Keung Yim
Nancy and Jeff Yoder
Yoder Meats
Zeiner's Bass Shop
Dick Zeitlow
Greg Zenner
Myrna and Vern Zielke
Dale Zogleman

THANK
YOU

CENTER INDUSTRIES CORPORATION

Center Industries Corporation, founded by CPRF in 1975, continues to thrive in the manufacturing world.

With a mission shared by CPRF to employ people with disabilities in a competitive work environment, CIC employs more than 250 people who specialize in a wide range of disciplines, including window

frame and window belt manufacturing, license plates for the State of Kansas (the company's inaugural contract), and more.

Last year, Center Industries began manufacturing window belts for Spirit AeroSystems, for whom CIC has created window frames for 24 years.

The contract brought 20 new jobs to Center Industries.



photo by Kacee Shuler
Employees at work on Center Industries Corporation's newest contract with Spirit AeroSystems, Inc., to produce window belts for Spirit's Boeing 737 Next Generation aircraft.

The contract was signed March 2012, and the first window belt was delivered to Spirit in May 2013.

BTCO, INC.

Incorporated in 2001, BTCO shares CPRF's mission of employing people with disabilities in a skilled career path.

The company's primary line of service is document conversion, small- and large-format imaging, and electronic records management.

Among its satisfied customers are the U.S. Air Force Personnel Center, Westar Energy, Kansas Corporation Commission, multiple Kansas state departments, and

many others.

In addition to this core service, BTCO also offers open-source web research and precise-tolerance plot printing.

In accordance with SourceAmerica/AbilityOne goals, BTCO maintains a workforce wherein more than 75 percent of its skilled workforce are people with physical disabilities.

All employees earn a competitive wage and receive full fringe benefits, including retirement packages.



photo by Kacee Shuler

Elias Abadayem, BTCO employee, works on a document conversion project, transforming paper forms into searchable, digital files. Abadayem was also one of the first students of the CPRF School of Adaptive Computer Training. SACT students, in addition to learning job-applicable computer and customer service skills, also have the opportunity to earn Microsoft-approved certifications in both Word, Excel, and Outlook.

oprf